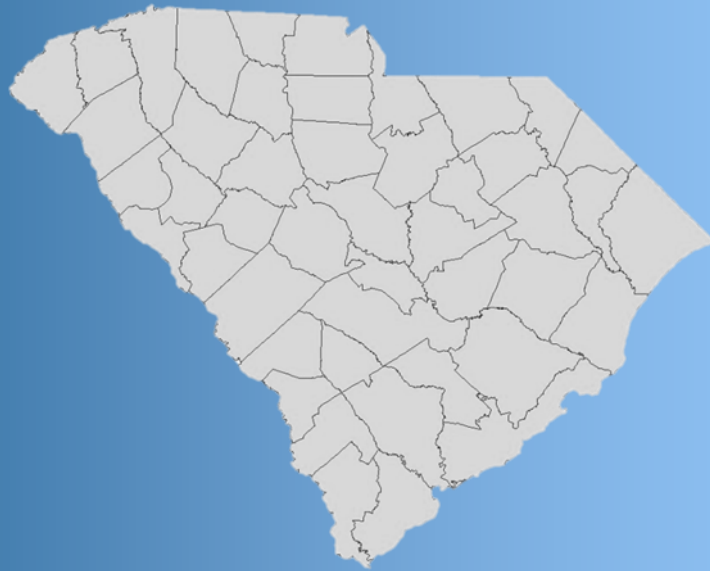


# The South Carolina STD/HIV/AIDS



Annual Surveillance Report  
December 31, 2020



The South Carolina STD/HIV/AIDS Annual Surveillance Data Report  
December 31, 2020

TABLE OF CONTENTS

Table Use	P. 3
Reported Cases of AIDS in South Carolina By Year of Diagnosis	P. 4
AIDS Summary and Case Rate Map	P. 5
AIDS Cases and Annual Rates per 100,000 Population, By County and Public Health Region	P. 6
AIDS Cases by Age Group, Exposure Category, and Sex	P. 8
Adult/Adolescent AIDS Cases by Sex, Exposure Category, and Race	P. 9
South Carolina Prevalence AIDS Summary	P. 11
AIDS Cases in Adolescents and Adults Under Age 25, by Sex and Exposure Category	P. 12
Reported Cases of HIV/AIDS in South Carolina by Year of Diagnosis	P. 13
HIV/AIDS Case Rate Map	P. 14
HIV Cases, Case Rates and Rankings by State and Metropolitan Statistical Area	P. 15
HIV/AIDS Cases and Annual Rates per 100,000 Population by County and Public Health Region	P. 17
HIV/AIDS Cases by Age Group, Exposure Category, and Sex	P. 19
Adult/Adolescent HIV/AIDS Infections by Sex, Exposure Category, and Race	P. 20
South Carolina Prevalence HIV/AIDS Summary	P. 22
HIV/AIDS Infections in Adolescents and Adults Under Age 25, by Sex and Exposure Category	P. 23
South Carolina HIV/AIDS Summary By Age Group, Race, and Sex	P. 24
South Carolina Adolescent (13 - 19 Years) HIV/AIDS Summary	P. 25
South Carolina Women of Childbearing Age (15-45 Years) HIV/AIDS Summary	P. 26
Reported Cases of Chlamydia in South Carolina by Year of Diagnosis	P. 27
Chlamydia Cases and Annual Rates per 100,000 Population, by County and Public Health Region	P. 28
Reported Cases of Gonorrhea in South Carolina by Year of Diagnosis	P. 30
Gonorrhea Cases and Annual Rates per 100,000 Population, by County and Public Health Region	P. 31
Reported Cases of Total Syphilis in South Carolina by Year of Diagnosis	P. 33
Total Syphilis Cases and Annual Rates per 100,000 Population, by County and Public Health Region	P. 34
Reported Cases of Infectious Syphilis in South Carolina by Year of Diagnosis	P. 36
Infectious Syphilis Cases and Annual Rates per 100,000 Population, by County and Public Health Region	P. 37
Technical Notes <b>(!!! Important: See Notice Regarding Prevalence Data !!!)</b>	P. 39

### Using These Tables

Number of cases per 100,000 population.

**Table 1**  
**South Carolina AIDS Cases and Annual Rates per 100,000 Population, By County**  
**Incidence Cases and Rates Diagnosed January - December 2013 and January - December 2014**  
**Prevalence Totals and Rates, and Cumulative Deaths through December 31, 2014**

County	Jan. 1 - Dec. 31, 2013		Jan. 1 - Dec. 31, 2014		Prevalence through Dec. 31, 2014		Death
	Cases	Rate	Cases	Rate	Cases	Rate	
Abbeville	.	.	.	.	23	91.6	19
Aiken	10	6.1	8	4.9	140	86	229
Allendale	.	.	.	.	26	260.3	39
Anderson	13	6.9	.	.	147	77.6	169
Bamberg	.	.	.	.	52	329.9	73
Barnwell	.	.	.	.	76	342.2	70
Beaufort	5	3	11	6.5	195	116	173
Berkeley	5	2.6	13	6.9	187	98.5	161
Calhoun	.	.	.	.	26	174.4	31

Cells with 4 or fewer cases are set to missing (.)

Prevalence number of cases.

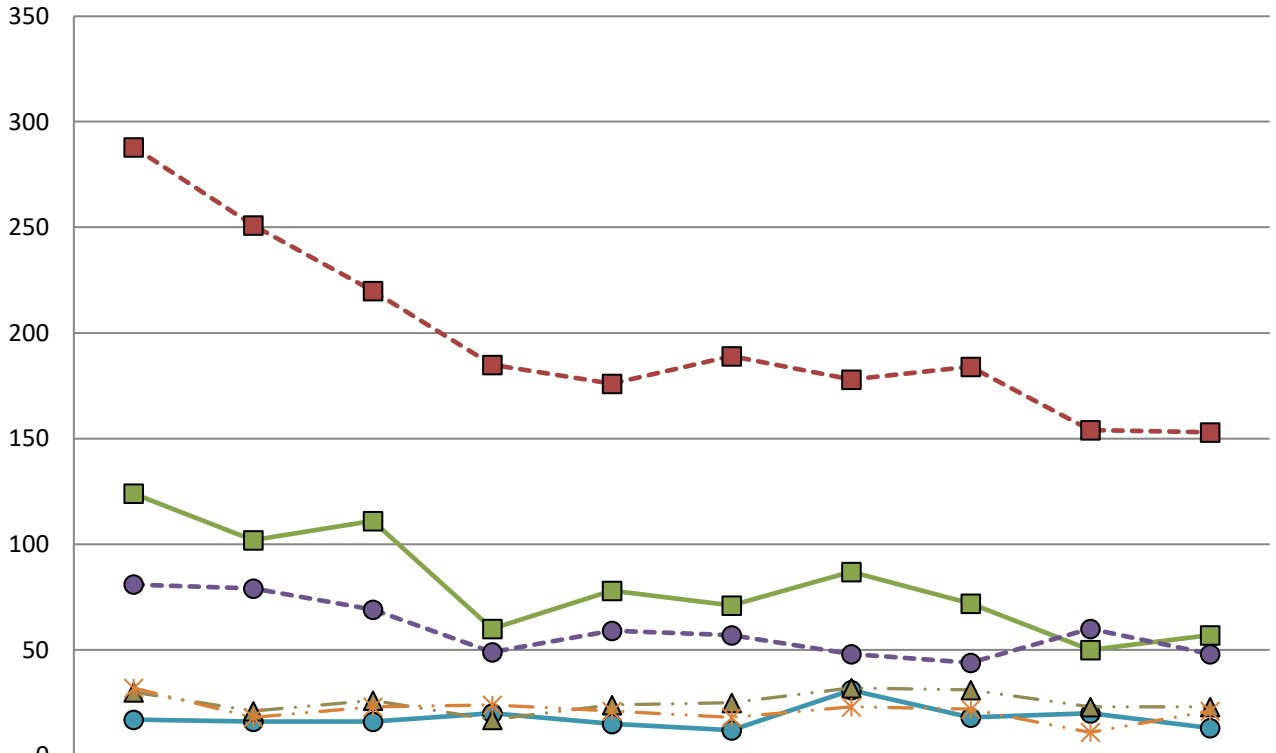
Note if AIDS/HIV/STD case.

**Table 7**  
**South Carolina HIV/AIDS Cases\* by Age Group, Exposure Category, and Sex**  
**Incidence Cases and Rates Diagnosed January - December 2013 and January - December 2014**  
**Prevalence Totals by Age Group and Exposure Category**  
**Prevalence Through December 31, 2014**

Adult/adolescent exposure category	Males				Females			
	Jan-Dec 2013		Jan-Dec 2014		Jan-Dec 2013		Jan-Dec 2014	
	Cases	%	Cases	%	Cases	%	Cases	%
Men who have sex with men	226	34%	193	32%	N/A		N/A	
Injecting drug use	67	10%	53	9%	26	8%	29	9%
Men who have sex with men & inject drugs	13	2%	9	1%	N/A		N/A	
Hemophilia/coagulation disorder	-	0%	-	0%	-	0%	2	1%
Heterosexual contact:	149	23%	116	19%	192	62%	149	48%
Sx w/ injecting drug user	19		5		26		15	
Sx w/ bisexual male	N/A		N/A		7		6	
Sx w/ person with hemophilia	2		-		1		1	
Sx w/ transfusion recipient w/HIV	1		-		1		-	
Sx w/HIV+ person, risk not specified	127		111		157		127	
Receipt of blood transfusion/components	4	1%	-	0%	2	1%	2	1%
Undetermined	199	30%	236	39%	121	39%	130	42%
Confirmed Other	-	0%	-	0%	-	0%	-	0%
<b>Adult/adolescent subtotal</b>	<b>658</b>	<b>100%</b>	<b>607</b>	<b>100%</b>	<b>341</b>	<b>100%</b>	<b>312</b>	<b>100%</b>

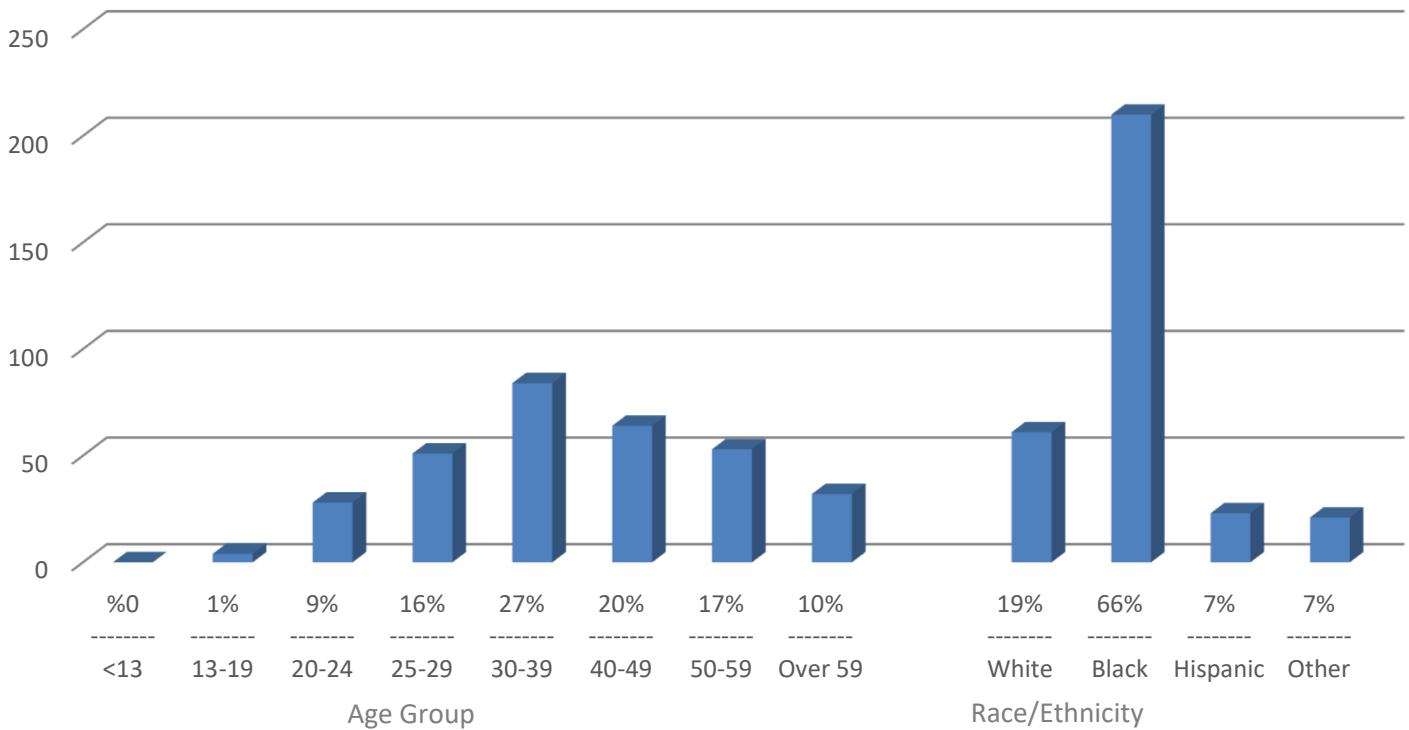
These figures are a breakdown of the heterosexual contacts. They are included in the total.

### South Carolina AIDS Cases by Year of Diagnosis by Race and Sex



	2011	2012	2013	2014	2015	2016	2017	2018	2019	2020
Black Male	288	251	220	185	176	189	178	184	154	153
Black Female	124	102	111	60	78	71	87	72	50	57
White Male	81	79	69	49	59	57	48	44	60	48
White Female	17	16	16	20	15	12	31	18	20	13
Hispanic M/F	30	21	26	17	24	25	32	31	23	23
Other M/F	32	18	23	24	21	18	23	22	11	21

### South Carolina 2020 AIDS Cases Count and Percent



**South Carolina Department of Health and Environmental Control  
HIV Surveillance Report**

HIV Surveillance Program

December 31, 2020

Telephone: (803) 898-0749

For assistance in reporting cases of AIDS or HIV in South Carolina, call DHEC toll-free at 1-800-277-0873. By South Carolina statute, physicians, laboratories, health care institutions, and others must report HIV infections and AIDS cases to DHEC.

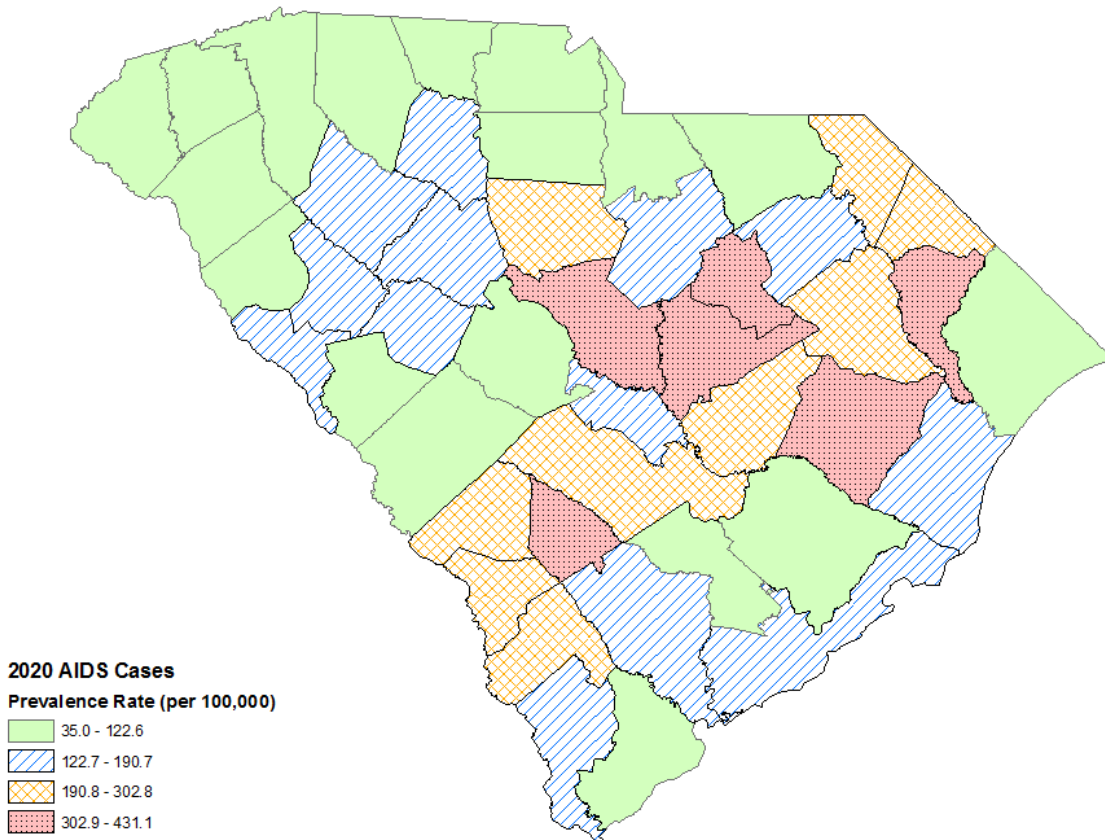
**Prevalence Totals**

**Total AIDS\* Cases in South Carolina**

Total Living AIDS Cases as of December 31, 2020	10,048
Total Deceased AIDS Cases	10,758

\* AIDS cases documented as of January 1, 1981.

**South Carolina AIDS Prevalence Rate**



**Table 1a**  
**South Carolina AIDS Cases\* and Annual Rate\*\*, By County**  
**Incidence Cases and Rates Diagnosed January - December 2019 and January - December 2020**  
**Prevalence\*\* Totals and Rates, and Cumulative Deaths through December 31, 2020**

County	Jan. 1 - Dec. 31, 2019		Jan. 1 - Dec. 31, 2020		Prevalence through Dec. 31, 2020		Deaths
	Cases	Rate	Cases	Rate	Cases	Rate	
Abbeville	.	0.0	.	16.4	23	94.2	28
Aiken	8	4.7	5	2.9	138	79.8	277
Allendale	.	11.5	.	0.0	19	228.1	48
Anderson	17	8.4	9	4.4	172	84.2	202
Bamberg	.	7.1	.	21.6	45	323.6	93
Barnwell	.	4.8	.	9.6	63	302.8	91
Beaufort	7	3.6	8	4.1	147	75.1	216
Berkeley	9	3.9	8	3.4	193	81.8	192
Calhoun	.	0.0	.	13.7	24	164.9	39
Charleston	29	7.0	20	4.8	797	190.7	1,275
Cherokee	.	1.7	.	5.2	43	75.0	78
Chester	6	18.6	.	3.1	38	117.9	57
Chesterfield	.	4.4	.	4.4	51	111.8	66
Clarendon	.	5.9	7	20.9	91	272.3	136
Colleton	.	0.0	.	5.3	71	189.4	133
Darlington	5	7.5	7	10.5	125	187.9	213
Dillon	.	13.1	.	9.9	66	217.3	78
Dorchester	7	4.3	7	4.2	163	98.3	198
Edgefield	.	7.3	.	3.7	28	103.2	53
Fairfield	.	8.9	.	4.5	62	281.1	66
Florence	15	10.8	6	4.4	343	249.3	444
Georgetown	7	11.2	7	11.0	100	157.8	172
Greenville	30	5.7	31	5.8	653	122.6	797
Greenwood	6	8.5	7	9.8	109	153.4	104
Hampton	.	10.4	.	22.2	44	243.7	70
Horry	25	7.1	23	6.3	385	105.3	478
Jasper	.	6.7	.	3.2	43	136.1	88
Kershaw	.	3.0	.	1.5	88	130.4	131
Lancaster	.	4.1	9	8.9	79	78.3	104
Laurens	.	4.4	6	8.8	88	129.6	110
Lee	.	.	.	.	72	431.1	63
Lexington	8	2.7	17	5.6	360	118.4	379
McCormick	.	10.6	.	0.0	17	180.3	15
Marion	.	3.3	.	0.0	104	344.9	134
Marlboro	.	.	.	.	59	230.6	108
Newberry	7	18.2	.	2.6	61	158.7	70
Oconee	.	5.0	.	2.5	28	35.0	68
Orangeburg	12	13.9	9	10.5	231	270.7	457
Pickens	5	3.9	.	2.3	84	65.6	97
Richland	38	9.1	47	11.2	1,588	379.0	1,867
Saluda	.	.	.	.	27	132.9	30
Spartanburg	10	3.1	17	5.2	318	97.5	459
Sumter	9	8.4	11	10.3	353	331.9	484
Union	.	7.3	.	7.4	40	148.2	56
Williamsburg	9	29.6	5	16.8	110	368.8	164
York	12	4.3	12	4.2	213	73.7	256
Not Reported	.	.	.	.	2,092	.	14
<b>Total</b>	<b>318</b>	<b>6.2</b>	<b>316</b>	<b>6.1</b>	<b>10,048</b>	<b>192.6</b>	<b>10,758</b>

\* Cells with 4 or fewer cases or deaths are set to missing (.).

\*\* See technical notes.

Note: Data in this report are provisional.

**Table 1b**  
**South Carolina AIDS Cases\* and Annual Rate\*\*, By Public Health Region\***  
**Incidence Cases and Rates Diagnosed January - December 2019 and January - December 2020**  
**Prevalence\*\* Totals and Rates, and Cumulative Deaths through December 31, 2020**

Region	Jan. 1 - Dec. 31, 2019		Jan. 1 - Dec. 31, 2020		Prevalence through Dec. 31, 2020		Deaths
	Cases	Rate	Cases	Rate	Cases	Rate	
Lowcountry	70	13.9	64	12.7	1,777	352.2	2,809
Midlands	90	8.5	97	9.1	2,745	256.3	3,381
Pee Dee	79	6.7	71	5.9	1,859	154.2	2,540
Upstate	79	14.1	84	15.0	1,575	281.4	2,014
<b>Total</b>	<b>318</b>	<b>6.2</b>	<b>316</b>	<b>6.1</b>	<b>10,048</b>	<b>192.6</b>	<b>10,758</b>

\* Cells with 4 or fewer cases or deaths are set to missing (.).

\*\* See technical notes.

Note: Data in this report are provisional.

**Table 2**  
**South Carolina AIDS Cases by Age Group, Exposure Category\*, and Sex,**  
**Incidence Cases Diagnosed January - December 2019 and January - December 2020**  
**Prevalence\* Cases through December 31, 2020**

	Males				Females				Totals*					
	Jan. 1 - Dec. 31, 2019		Jan. 1 - Dec. 31, 2020		Jan. 1 - Dec. 31, 2019		Jan. 1 - Dec. 31, 2020		Jan. 1 - Dec. 31, 2019		Jan. 1 - Dec. 31, 2020		Prevalence Total	
	Cases	%	Cases	%	Cases	%	Cases	%	Cases	%	Cases	%	Cases	%
<b>Adult/adolescent exposure category</b>														
Men Who Have Sex With Men	133	55.6	136	57.9	.	0.0	.	0.0	133	41.8	136	43.3	4,229	42.6
Injecting Drug Use	16	6.7	8	3.4	7	8.9	7	8.9	23	7.2	15	4.8	759	7.6
Men Who Have Sex With Men & Inject Drugs	10	4.2	13	5.5	.	0.0	.	0.0	10	3.1	13	4.1	324	3.3
Hemophilia/Coagulation Disorder	.	.	.	.	.	.	.	.	.	.	.	.	14	0.1
Heterosexual Contact subtotal	17	7.1	11	4.7	35	44.3	33	41.8	52	16.4	44	14.0	2,651	26.7
Sx w/ injecting drug user	1	.	.	.	3	.	4	.	4	.	4	.	313	.
Sx w/ bisexual male	.	.	.	.	2	.	.	.	2	.	.	.	98	.
Sx w/ person with hemophilia	.	.	.	.	.	.	.	.	.	.	.	.	6	.
Sx w/ transfusion recipient w/HIV	.	.	.	.	1	.	.	.	1	.	.	.	26	.
Sx w/HIV+ person, risk not specified	16	.	11	.	29	.	29	.	45	.	40	.	2,208	.
Receipt of blood transfusion/components	.	.	.	.	.	.	.	.	.	.	.	.	6	0.1
Adult Undetermined	63	26.4	67	28.5	37	46.8	39	49.4	100	31.4	106	33.8	1,948	19.6
<b>Adult/adolescent subtotal</b>	<b>239</b>	<b>100.0</b>	<b>235</b>	<b>100.0</b>	<b>79</b>	<b>100.0</b>	<b>79</b>	<b>100.0</b>	<b>318</b>	<b>100.0</b>	<b>314</b>	<b>100.0</b>	<b>9,931</b>	<b>100.0</b>
<b>Pediatric (&lt;13 years old) exposure category</b>														
Hemophilia/coagulation disorder	.	.	.	.	.	.	.	.	.	.	.	.	1	0.9
Mother with/at risk for HIV infection:	.	.	1	100.0	.	.	1	100.0	.	.	2	100.0	104	88.9
Injecting drug use	.	.	.	.	.	.	.	.	.	.	.	.	3	.
Sx w/ HIV+ person, risk not specified	.	.	.	.	.	.	.	.	.	.	.	.	1	.
Has HIV infection, risk not specified	.	.	1	.	.	.	1	.	.	.	2	.	100	.
Child Undetermined	.	.	.	.	.	.	.	.	.	.	.	.	11	9.4
Confirmed Other	.	.	.	.	.	.	.	.	.	.	.	.	1	0.9
<b>Pediatric subtotal</b>	<b>.</b>	<b>.</b>	<b>1</b>	<b>100.0</b>	<b>.</b>	<b>.</b>	<b>1</b>	<b>100.0</b>	<b>.</b>	<b>.</b>	<b>2</b>	<b>100.0</b>	<b>117</b>	<b>100.0</b>
<b>Total</b>	<b>239</b>	<b>100.0</b>	<b>236</b>	<b>100.0</b>	<b>79</b>	<b>100.0</b>	<b>80</b>	<b>100.0</b>	<b>318</b>	<b>100.0</b>	<b>316</b>	<b>100.0</b>	<b>10,048</b>	<b>100.0</b>

\* See Technical Notes.  
Note: Data in this report are provisional.



**Table 3a**  
**South Carolina Adult/Adolescent AIDS Cases by Sex, Exposure Category\*, and Race**  
**Cases diagnosed between January - December 2020 and Prevalence\* Cases, Through December 31, 2020**

	White				Black				Hispanic				Totals*			
	Jan. - Dec. 2020		Prevalence		Jan. - Dec. 2020		Prevalence		Jan. - Dec. 2020		Prevalence		Jan. - Dec. 2020		Prevalence	
	Cases	%	Cases	%	Cases	%	Cases	%	Cases	%	Cases	%	Cases	%	Cases	%
<b>All Sexes exposure category*</b>																
Men Who Have Sex With Men	20	32.8	1,311	59.7	94	45.2	2,476	37.5	12	52.2	214	39.1	136	43.3	4,229	42.6
Injecting Drug Use	5	8.2	169	7.7	9	4.3	494	7.5	.	0.0	41	7.5	15	4.8	759	7.6
Men Who Have Sex With Men & Inject Drugs	5	8.2	125	5.7	6	2.9	169	2.6	1	4.3	6	1.1	13	4.1	324	3.3
Hemophilia/Coagulation Disorder	.	.	11	0.5	.	.	3	0.0	.	.	.	0.0	.	.	14	0.1
Heterosexual Contact subtotal	6	9.8	291	13.3	29	13.9	2,076	31.5	3	13.0	119	21.8	44	14.0	2,651	26.7
Sx w/ injecting drug user	1	.	56	.	2	.	226	.	.	.	12	.	4	.	313	.
Sx w/ bisexual male	.	.	19	.	.	.	74	.	.	.	1	.	.	.	98	.
Sx w/ person with hemophilia	.	.	6	.	.	.	.	.	.	.	.	.	.	.	6	.
Sx w/ transfusion recipient w/HIV	.	.	3	.	.	.	20	.	.	.	.	.	.	.	26	.
Sx w/HIV+ person, risk not specified	5	.	207	.	27	.	1,756	.	3	.	106	.	40	.	2,208	.
Receipt of blood transfusion/components	.	.	2	0.1	.	.	4	0.1	.	.	.	0.0	.	.	6	0.1
Adult Undetermined	25	41.0	287	13.1	70	33.7	1,376	20.9	7	30.4	167	30.5	106	33.8	1,948	19.6
<b>Total</b>	<b>61</b>	<b>100.0</b>	<b>2,196</b>	<b>100.0</b>	<b>208</b>	<b>100.0</b>	<b>6,598</b>	<b>100.0</b>	<b>23</b>	<b>100.0</b>	<b>547</b>	<b>100.0</b>	<b>314</b>	<b>100.0</b>	<b>9,931</b>	<b>100.0</b>

\* See technical notes.  
Note: Data in this report are provisional.

**Table 3b**  
**South Carolina Adult/Adolescent AIDS Cases by Sex, Exposure Category\*, and Race**  
**Cases diagnosed between January - December 2020 and Prevalence\* Cases, Through December 31, 2020**

	White				Black				Hispanic				Totals*			
	Jan. - Dec. 2020		Prevalence		Jan. - Dec. 2020		Prevalence		Jan. - Dec. 2020		Prevalence		Jan. - Dec. 2020		Prevalence	
	Cases	%	Cases	%	Cases	%	Cases	%	Cases	%	Cases	%	Cases	%	Cases	%
<b>Male exposure category*</b>																
Men Who Have Sex With Men	20	41.7	1,311	73.0	94	61.8	2,476	55.2	12	57.1	214	47.9	136	57.9	4,229	59.2
Injecting Drug Use	2	4.2	87	4.8	5	3.3	305	6.8	.	0.0	29	6.5	8	3.4	456	6.4
Men Who Have Sex With Men & Inject Drugs	5	10.4	125	7.0	6	3.9	169	3.8	1	4.8	6	1.3	13	5.5	324	4.5
Hemophilia/Coagulation Disorder	.	.	10	0.6	.	.	2	0.0	.	.	.	0.0	.	.	12	0.2
Heterosexual Contact subtotal	3	6.3	73	4.1	7	4.6	753	16.8	1	4.8	57	12.8	11	4.7	938	13.1
Sx w/ injecting drug user	.	.	11	.	.	.	60	.	.	.	8	.	.	.	84	.
Sx w/ bisexual male	.	.	.	.	.	.	.	.	.	.	.	.	.	.	.	.
Sx w/ person with hemophilia	.	.	1	.	.	.	.	.	.	.	.	.	.	.	1	.
Sx w/ transfusion recipient w/HIV	.	.	.	.	.	.	7	.	.	.	.	.	.	.	8	.
Sx w/HIV+ person, risk not specified	3	.	61	.	7	.	686	.	1	.	49	.	11	.	845	.
Receipt of blood transfusion/components	.	.	2	0.1	.	.	1	0.0	.	.	.	0.0	.	.	3	0.0
Adult Undetermined	18	37.5	189	10.5	40	26.3	780	17.4	7	33.3	141	31.5	67	28.5	1,178	16.5
<b>Total</b>	<b>48</b>	<b>100.0</b>	<b>1,797</b>	<b>100.0</b>	<b>152</b>	<b>100.0</b>	<b>4,486</b>	<b>100.0</b>	<b>21</b>	<b>100.0</b>	<b>447</b>	<b>100.0</b>	<b>235</b>	<b>100.0</b>	<b>7,140</b>	<b>100.0</b>
<b>Female exposure category*</b>																
Injecting Drug Use	3	23.1	82	20.6	4	7.1	189	8.9	.	0.0	12	12.0	7	8.9	303	10.9
Hemophilia/Coagulation Disorder	.	.	1	0.3	.	.	1	0.0	.	.	.	0.0	.	.	2	0.1
Heterosexual Contact subtotal	3	23.1	218	54.6	22	39.3	1,323	62.6	2	100.0	62	62.0	33	41.8	1,713	61.4
Sx w/ injecting drug user	1	.	45	.	2	.	166	.	.	.	4	.	4	.	229	.
Sx w/ bisexual male	.	.	19	.	.	.	74	.	.	.	1	.	.	.	98	.
Sx w/ person with hemophilia	.	.	5	.	.	.	.	.	.	.	.	.	.	.	5	.
Sx w/ transfusion recipient w/HIV	.	.	3	.	.	.	13	.	.	.	.	.	.	.	18	.
Sx w/HIV+ person, risk not specified	2	.	146	.	20	.	1,070	.	2	.	57	.	29	.	1,363	.
Receipt of blood transfusion/components	.	.	.	0.0	.	.	3	0.1	.	.	.	0.0	.	.	3	0.1
Adult Undetermined	7	53.8	98	24.6	30	53.6	596	28.2	.	0.0	26	26.0	39	49.4	770	27.6
<b>Total</b>	<b>13</b>	<b>100.0</b>	<b>399</b>	<b>100.0</b>	<b>56</b>	<b>100.0</b>	<b>2,112</b>	<b>100.0</b>	<b>2</b>	<b>100.0</b>	<b>100</b>	<b>100.0</b>	<b>79</b>	<b>100.0</b>	<b>2,791</b>	<b>100.0</b>

\* See technical notes.  
Note: Data in this report are provisional.

**Table 4**  
**South Carolina Prevalence\* AIDS Summary Through December 31, 2020**

Race/Ethnicity	Adult/Adolescent		Pediatric (<=12 years)		Total	
	Cases	%	Cases	%	Cases	%
White, Not Hispanic	2,196	22.1	12	10.3	2,208	22.0
Black, Not Hispanic	6,598	66.4	87	74.4	6,685	66.5
Hispanic	547	5.5	8	6.8	555	5.5
Asian/Pacific Islander	29	0.3	.	0.0	29	0.3
American Indian/Alaskan	6	0.1	.	0.0	6	0.1
Other	546	5.5	10	8.5	556	5.5
Unknown	9	0.1	.	0.0	9	0.1
<b>Total</b>	<b>9,931</b>	<b>100.0</b>	<b>117</b>	<b>100.0</b>	<b>10,048</b>	<b>100.0</b>

Age* (as of 12/31/2020) by Race	White		Black		Hispanic		Total	
	Cases	%	Cases	%	Cases	%	Cases	%
<= 12	.	0.0	4	0.1	1	0.2	9	0.1
13-19	1	0.0	9	0.1	2	0.4	14	0.1
20-24	6	0.3	71	1.1	10	1.8	96	1.0
25-29	48	2.2	288	4.3	15	2.7	386	3.8
30-39	216	9.8	1,046	15.6	104	18.7	1,459	14.5
40-49	387	17.5	1,341	20.1	191	34.4	2,061	20.5
50-59	921	41.7	2,225	33.3	144	25.9	3,470	34.5
Over 59	629	28.5	1,701	25.4	88	15.9	2,553	25.4
<b>Total</b>	<b>2,208</b>	<b>100.0</b>	<b>6,685</b>	<b>100.0</b>	<b>555</b>	<b>100.0</b>	<b>10,048</b>	<b>100.0</b>

Exposure Category* by Gender	Males		Females		Totals	
	Cases	%	Cases	%	Cases	%
<b>Adult/adolescent</b>						
Men Who Have Sex With Men	4,229	59.2	.	0.0	4,229	42.6
Injecting Drug Use	456	6.4	303	10.9	759	7.6
Men Who Have Sex With Men & Inject Drugs	324	4.5	.	0.0	324	3.3
Adult Hemophilia/Coagulation Disorder	12	0.2	2	0.1	14	0.1
Heterosexual Contact	938	13.1	1,713	61.4	2,651	26.7
Adult Receipt of Blood Transfusion/Components	3	0.0	3	0.1	6	0.1
Adult Confirmed Other	.	0.0	.	0.0	.	0.0
Adult Undetermined	1,178	16.5	770	27.6	1,948	19.6
<b>Total</b>	<b>7,140</b>	<b>100.0</b>	<b>2,791</b>	<b>100.0</b>	<b>9,931</b>	<b>100.0</b>
<b>Pediatric (&lt;13 years old)</b>						
Child Hemophilia/Coagulation Disorder	1	2.1	.	0.0	1	0.9
Mother with HIV/AIDS	41	87.2	60	85.7	101	86.3
Child Confirmed Other	.	0.0	1	1.4	1	0.9
Ped Undetermined	4	8.5	7	10.0	11	9.4
<b>Total</b>	<b>47</b>	<b>100.0</b>	<b>70</b>	<b>100.0</b>	<b>117</b>	<b>100.0</b>
<b>Total</b>	<b>7,187</b>	<b>100.0</b>	<b>2,861</b>	<b>100.0</b>	<b>10,048</b>	<b>100.0</b>

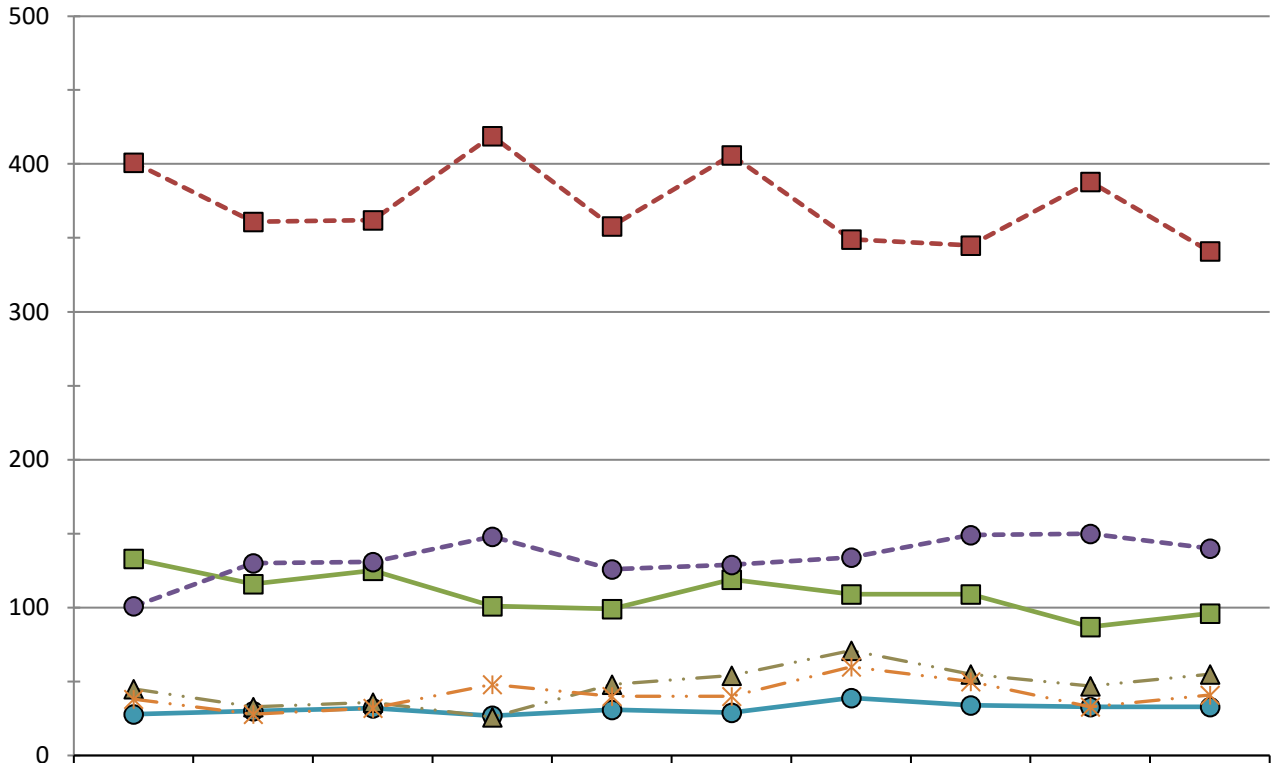
\* See technical notes.  
 Note: Data in this report are provisional.

**Table 5**  
**South Carolina AIDS Cases in Adolescents and Adults Under Age 25, by Sex, Exposure Category\***  
**Incidence Cases Diagnosed January - December 2019 and January - December 2020**  
**Prevalence\* Totals through December 31, 2020**

	Ages 13 - 19						Ages 20 - 24					
	Jan. - Dec. 2019		Jan. - Dec. 2020		Prevalence		Jan. - Dec. 2019		Jan. - Dec. 2020		Prevalence	
	Cases	%	Cases	%	Cases	%	Cases	%	Cases	%	Cases	%
<b>Male exposure category</b>												
Men Who Have Sex With Men	2	66.7	4	100.0	7	70.0	13	68.4	20	76.9	50	67.6
Men Who Have Sex With Men & Inject Drugs	.	0.0	.	0.0	.	0.0	1	5.3	2	7.7	1	1.4
Heterosexual Contact subtotal	.	0.0	.	0.0	1	10.0	.	0.0	1	3.8	1	1.4
Sx w/ injecting drug user	.	.	.	.	.	.	.	.	.	.	.	.
Sx w/ transfusion recipient w/HIV	.	.	.	.	.	.	.	.	.	.	.	.
Sx w/HIV+ person, risk not specified	.	.	.	.	1	.	.	.	1	.	1	.
Adult Undetermined	1	33.3	.	0.0	1	10.0	5	26.3	3	11.5	12	16.2
Mother with/at risk for HIV infection:	.	.	.	.	1	10.0	.	.	.	.	9	12.2
Has HIV infection, risk not specified	.	.	.	.	1	.	.	.	.	.	9	.
Child Undetermined	.	.	.	.	.	0.0	.	.	.	.	1	1.4
<b>Total</b>	<b>3</b>	<b>100.0</b>	<b>4</b>	<b>100.0</b>	<b>10</b>	<b>100.0</b>	<b>19</b>	<b>100.0</b>	<b>26</b>	<b>100.0</b>	<b>74</b>	<b>100.0</b>
<b>Female exposure category</b>												
Heterosexual Contact subtotal	.	.	.	.	.	0.0	.	0.0	.	0.0	4	18.2
Sx w/ injecting drug user	.	.	.	.	.	.	.	.	.	.	1	.
Sx w/ transfusion recipient w/HIV	.	.	.	.	.	.	.	.	.	.	1	.
Sx w/HIV+ person, risk not specified	.	.	.	.	.	.	.	.	.	.	2	.
Adult Undetermined	.	.	.	.	1	25.0	1	100.0	2	100.0	4	18.2
Mother with/at risk for HIV infection:	.	.	.	.	3	75.0	.	.	.	.	11	50.0
Has HIV infection, risk not specified	.	.	.	.	3	.	.	.	.	.	11	.
Child Undetermined	.	.	.	.	.	0.0	.	.	.	.	3	13.6
<b>Total</b>	<b>.</b>	<b>.</b>	<b>.</b>	<b>.</b>	<b>4</b>	<b>100.0</b>	<b>1</b>	<b>100.0</b>	<b>2</b>	<b>100.0</b>	<b>22</b>	<b>100.0</b>

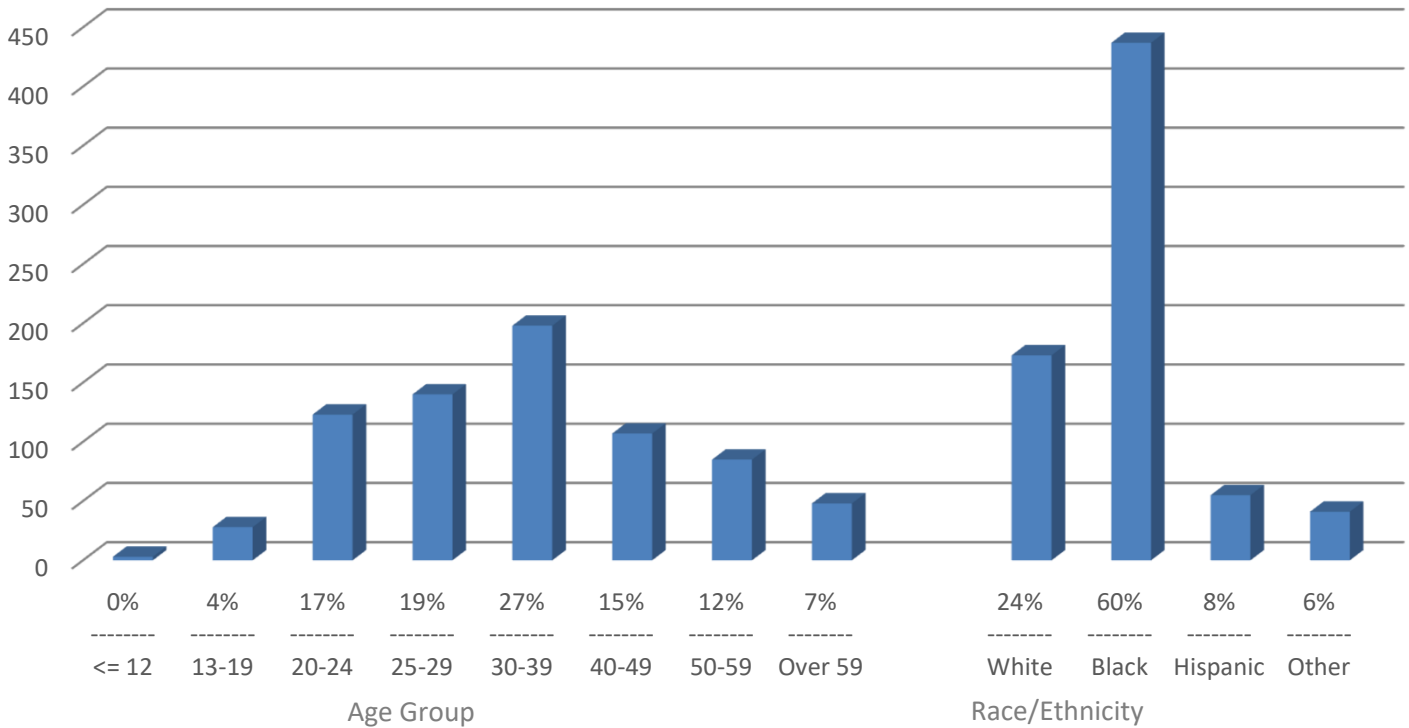
\* See Technical Notes.  
Note: Data in this report are provisional.

### South Carolina HIV Cases by Year of Diagnosis by Race and Sex



	2011	2012	2013	2014	2015	2016	2017	2018	2019	2020
Black Male	401	361	362	419	358	406	349	345	388	341
Black Female	133	116	125	101	99	119	109	109	87	96
White Male	101	130	131	148	126	129	134	149	150	140
White Female	28	30	32	27	31	29	39	34	33	33
Hispanic M/F	45	33	36	26	48	54	71	55	47	55
Other M/F	38	28	32	48	40	40	60	50	33	41

### South Carolina 2020 HIV Cases Count and Percent



# South Carolina Department of Health and Environmental Control HIV Surveillance Report

HIV Surveillance Program

December 31, 2020

Telephone: (803) 898-0749

For assistance in reporting cases of AIDS or HIV in South Carolina, call DHEC toll-free at 1-800-277-0873. By South Carolina statute, physicians, laboratories, health care institutions, and others must report HIV infections and AIDS cases to DHEC.

## Prevalence Totals

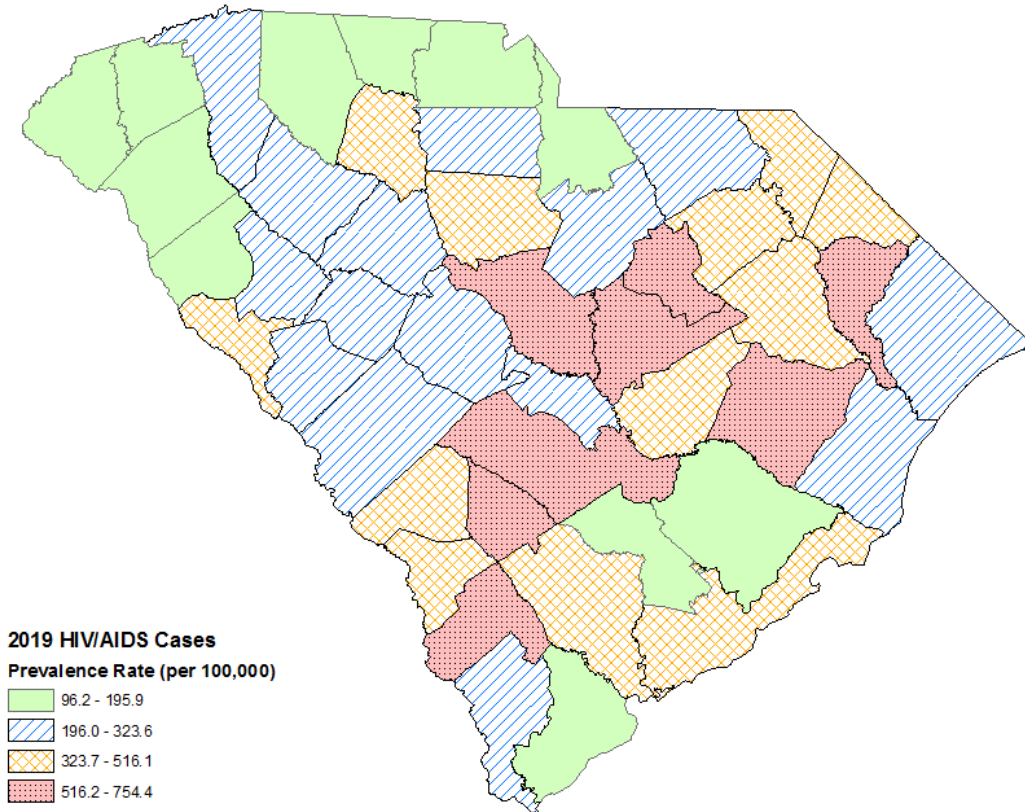
**Total HIV Infections in South Carolina (\*includes total number of AIDS Cases)**

Total Living HIV/AIDS Cases as of December 31, 2020

19,329

\* AIDS cases documented as of January 1, 1981 and HIV case collection starting February 1, 1986.

## South Carolina HIV/AIDS Prevalence Rate



United States HIV Cases, Annual Rates and Ranking by Area of Residence  
2019 Incidence and Prevalence

Rank	Area of Residence	Incidence 2019	
		Cases	Rate
1	District of Columbia	257	36.4
2	Georgia	2,449	23.1
3	Florida	4,384	20.4
4	Louisiana	881	19
5	Nevada	512	16.6
6	Mississippi	477	16
7	Maryland	918	15.2
8	Texas	4,308	14.9
<b>9</b>	<b>South Carolina</b>	<b>681</b>	<b>13.2</b>
10	North Carolina	1,369	13.1

Rank	Area of Residence	Prevalence 2019	
		Cases	Rate
1	District of Columbia	14,056	1991.6
2	New York	126,713	651.4
3	Maryland	33,427	552.9
4	Georgia	56,539	532.5
5	Florida	113,621	529
6	U.S. Virgin Islands	532	498.9
7	Puerto Rico	15,839	495.9
8	Louisiana	21,320	458.6
9	New Jersey	35,178	396.1
10	Nevada	10,740	348.7
<b>12</b>	<b>South Carolina</b>	<b>17,615</b>	<b>342.1</b>

Source: CDC, Diagnoses of HIV Infection in the United States and Dependent Areas 2019

Available at: [www.cdc.gov/hiv/library/reports/hiv-surveillance/vol-32](http://www.cdc.gov/hiv/library/reports/hiv-surveillance/vol-32)

United States HIV Cases, Annual Rates and Ranking by Metropolitan Statistical Area  
2019 Incidence and Prevalence

Rank *	Area of Residence	Incidence 2019		Prevalence 2019	
		Cases	Rate	Cases	Rate
1	Miami, FL	1,984	32.2	54,492	883.7
2	Atlanta, GA	1,661	27.6	38,445	638.6
3	Orlando, FL	654	25.1	12,622	483.9
4	Baton Rouge, LA	201	23.5	5,259	615.2
<b>5</b>	<b>Memphis, TN</b>	<b>310</b>	<b>23</b>	<b>7,332</b>	<b>544.7</b>
6	New Orleans, LA	282	22.2	8,141	640.8
7	Jackson, MS	125	21	3,425	575.8
8	Jacksonville, FL	317	20.3	7,285	467.1
9	Houston, TX	1,436	20.3	27,310	386.5
10	Bakersfield, CA	179	19.9	1,785	198.3
<b>15</b>	<b>Columbia, SC</b>	<b>147</b>	<b>17.5</b>	<b>4,212</b>	<b>502.4</b>
<b>33</b>	<b>Charleston, SC</b>	<b>106</b>	<b>13.2</b>	<b>2,703</b>	<b>337</b>
<b>48</b>	<b>Greenville, SC</b>	<b>105</b>	<b>11.4</b>	<b>2,168</b>	<b>235.5</b>

\*Ranking is based on CDC analysis of Jan-Dec 2019 Incidence rate.

Source: Diagnoses of HIV Infection in the United States and Puerto Rico, 2019.  
HIV Surveillance Report, Volume 32, Table 22.

Available at: [www.cdc.gov/hiv/library/reports/hiv-surveillance.html](http://www.cdc.gov/hiv/library/reports/hiv-surveillance.html)



**Table 6a**  
**South Carolina HIV/AIDS Cases\* and Annual Rate\*\*, By County**  
**Incidence Cases and Rates Diagnosed January - December 2019 and January - December 2020**  
**Prevalence\*\* Totals and Rates through December 31, 2020**

County	Jan. 1 - Dec. 31, 2019		Jan. 1 - Dec. 31, 2020		Prevalence through Dec. 31, 2020	
	Cases	Rate	Cases	Rate	Cases	Rate
Abbeville	.	0.0	.	12.3	41	168.0
Aiken	19	11.1	19	11.0	354	204.7
Allendale	.	23.0	.	12.0	43	516.1
Anderson	24	11.8	19	9.3	331	162.0
Bamberg	.	14.2	.	21.6	92	661.6
Barnwell	.	9.6	.	19.2	96	461.4
Beaufort	21	10.9	16	8.2	314	160.5
Berkeley	23	10.1	19	8.1	368	155.9
Calhoun	.	13.7	.	27.5	33	226.7
Charleston	68	16.5	64	15.3	1,653	395.5
Cherokee	6	10.5	.	7.0	86	150.0
Chester	5	15.5	.	6.2	85	263.7
Chesterfield	.	8.8	5	11.0	97	212.7
Clarendon	8	23.7	8	23.9	146	436.9
Colleton	5	13.3	7	18.7	143	381.5
Darlington	11	16.5	11	16.5	261	392.4
Dillon	13	42.7	7	23.1	121	398.5
Dorchester	20	12.3	19	11.5	308	185.8
Edgefield	6	22.0	.	7.4	83	306.0
Fairfield	.	8.9	.	9.1	111	503.2
Florence	35	25.3	23	16.7	681	495.0
Georgetown	6	9.6	10	15.8	205	323.6
Greenville	66	12.6	70	13.1	1,241	233.1
Greenwood	14	19.8	12	16.9	222	312.4
Hampton	5	26.0	.	11.1	101	559.5
Horry	49	13.8	47	12.9	813	222.5
Jasper	.	13.3	.	12.7	89	281.8
Kershaw	6	9.0	9	13.3	154	228.2
Lancaster	10	10.2	10	9.9	134	132.8
Laurens	11	16.3	9	13.3	162	238.6
Lee	.	5.9	.	18.0	126	754.4
Lexington	29	9.7	38	12.5	644	211.9
McCormick	.	10.6	.	21.2	41	434.8
Marion	7	22.8	.	9.9	171	567.0
Marlboro	5	19.1	.	15.6	119	465.2
Newberry	9	23.4	.	7.8	96	249.7
Oconee	8	10.1	8	10.0	77	96.2
Orangeburg	26	30.2	22	25.8	480	562.4
Pickens	15	11.8	6	4.7	139	108.6
Richland	114	27.4	112	26.7	2,877	686.6
Saluda	.	0.0	.	9.8	47	231.4
Spartanburg	32	10.0	34	10.4	639	195.9
Sumter	23	21.6	20	18.8	623	585.7
Union	.	11.0	.	11.1	97	359.4
Williamsburg	7	23.1	16	53.6	216	724.2
York	34	12.1	40	13.8	441	152.5
Not Reported	.	.	.	.	3,928	.
<b>Total</b>	<b>763</b>	<b>14.8</b>	<b>732</b>	<b>14.0</b>	<b>19,329</b>	<b>370.4</b>

\* Cells with 4 or fewer cases are set to missing (.).

\*\* See technical notes.

Note: Data in this report are provisional.

**Table 6b**  
**South Carolina HIV/AIDS Cases\* and Annual Rate\*\*, By Public Health Region\***  
**Incidence Cases and Rates Diagnosed January - December 2019 and January - December 2020**  
**Prevalence\*\* Totals and Rates through December 31, 2020**

Region	Jan. 1 - Dec. 31, 2019		Jan. 1 - Dec. 31, 2020		Prevalence through Dec. 31, 2020	
	Cases	Rate	Cases	Rate	Cases	Rate
Lowcountry	178	35.4	161	31.9	3,624	718.2
Midlands	236	22.4	243	22.7	5,122	478.3
Pee Dee	169	14.2	157	13.0	3,579	296.8
Upstate	180	32.0	170	30.4	3,076	549.5
<b>Total</b>	<b>763</b>	<b>14.8</b>	<b>732</b>	<b>14.0</b>	<b>19,329</b>	<b>370.4</b>

\* Cells with 4 or fewer cases are set to missing (.).

\*\* See technical notes.

Note: Data in this report are provisional.

**Table 7**  
**South Carolina HIV/AIDS Cases\* by Age Group, Exposure Category\*\*, and Sex,**  
**Incidence Cases Diagnosed January - December 2019 and January - December 2020**  
**Prevalence\*\* Totals through December 31, 2020**

	Males				Females				Totals**					
	Jan. 1 - Dec. 31, 2019		Jan. 1 - Dec. 31, 2020		Jan. 1 - Dec. 31, 2019		Jan. 1 - Dec. 31, 2020		Jan. 1 - Dec. 31, 2019		Jan. 1 - Dec. 31, 2020		Prevalence Total	
	Cases	%	Cases	%	Cases	%	Cases	%	Cases	%	Cases	%	Cases	%
<b>Adult/adolescent exposure category</b>														
Men Who Have Sex With Men	414	66.5	347	60.0	.	0.0	.	0.0	414	54.4	347	47.7	8,666	45.5
Injecting Drug Use	13	2.1	13	2.2	7	5.1	8	5.3	20	2.6	21	2.9	1,169	6.1
Men Who Have Sex With Men & Inject Drugs	14	2.2	7	1.2	.	0.0	.	0.0	14	1.8	7	1.0	543	2.9
Hemophilia/Coagulation Disorder	.	.	.	.	.	.	.	.	.	.	.	.	16	0.1
Heterosexual Contact subtotal	10	1.6	8	1.4	33	23.9	28	18.7	43	5.7	36	4.9	4,377	23.0
Sx w/ injecting drug user	2	.	1	.	2	.	2	.	4	.	3	.	459	.
Sx w/ bisexual male	.	.	.	.	1	.	1	.	1	.	1	.	190	.
Sx w/ person with hemophilia	.	.	.	.	.	.	.	.	.	.	.	.	9	.
Sx w/ transfusion recipient w/HIV	.	.	.	.	3	.	.	.	3	.	.	.	43	.
Sx w/HIV+ person, risk not specified	8	.	7	.	27	.	25	.	35	.	32	.	3,676	.
Receipt of blood transfusion/components	.	.	.	.	.	.	.	.	.	.	.	.	9	0.0
Adult Undetermined	172	27.6	203	35.1	98	71.0	114	76.0	270	35.5	317	43.5	4,253	22.3
<b>Adult/adolescent subtotal</b>	<b>623</b>	<b>100.0</b>	<b>578</b>	<b>100.0</b>	<b>138</b>	<b>100.0</b>	<b>150</b>	<b>100.0</b>	<b>761</b>	<b>100.0</b>	<b>728</b>	<b>100.0</b>	<b>19,033</b>	<b>100.0</b>
<b>Pediatric (&lt;13 years old) exposure category</b>														
Hemophilia/coagulation disorder	.	.	.	.	.	.	.	.	.	.	.	.	1	0.3
Mother with/at risk for HIV infection:	.	.	.	.	2	100.0	3	75.0	2	100.0	3	75.0	263	88.9
Injecting drug use	.	.	.	.	.	.	.	.	.	.	.	.	5	.
Sx w/ HIV+ person, risk not specified	.	.	.	.	.	.	.	.	.	.	.	.	1	.
Has HIV infection, risk not specified	.	.	.	.	2	.	3	.	2	.	3	.	257	.
Child Undetermined	.	.	.	.	.	0.0	1	25.0	.	0.0	1	25.0	29	9.8
Confirmed Other	.	.	.	.	.	.	.	.	.	.	.	.	3	1.0
<b>Pediatric subtotal</b>	<b>.</b>	<b>.</b>	<b>.</b>	<b>.</b>	<b>2</b>	<b>100.0</b>	<b>4</b>	<b>100.0</b>	<b>2</b>	<b>100.0</b>	<b>4</b>	<b>100.0</b>	<b>296</b>	<b>100.0</b>
<b>Total</b>	<b>623</b>	<b>100.0</b>	<b>578</b>	<b>100.0</b>	<b>140</b>	<b>100.0</b>	<b>154</b>	<b>100.0</b>	<b>763</b>	<b>100.0</b>	<b>732</b>	<b>100.0</b>	<b>19,329</b>	<b>100.0</b>

\* AIDS cases are included in counts of HIV cases.

\*\* See Technical Notes.

Note: Data in this report are provisional.

**Table 8a**  
**South Carolina Adult/Adolescent HIV/AIDS Cases\* by Sex, Exposure Category\*\*, and Race**  
**Cases diagnosed between January - December 2020 and Prevalence Through December 31, 2020**

	White				Black				Hispanic				Totals**			
	Jan. - Dec. 2020		Prevalence**		Jan. - Dec. 2020		Prevalence		Jan. - Dec. 2020		Prevalence		Jan. - Dec. 2020		Prevalence	
	Cases	%	Cases	%	Cases	%	Cases	%	Cases	%	Cases	%	Cases	%	Cases	%
<b>All Sexes exposure category**</b>																
Men Who Have Sex With Men	82	48.0	2,723	58.9	214	49.1	5,002	40.9	28	50.9	462	44.0	347	47.7	8,666	45.5
Injecting Drug Use	14	8.2	299	6.5	5	1.1	735	6.0	1	1.8	64	6.1	21	2.9	1,169	6.1
Men Who Have Sex With Men & Inject Drugs	4	2.3	247	5.3	2	0.5	242	2.0	1	1.8	18	1.7	7	1.0	543	2.9
Hemophilia/Coagulation Disorder	.	.	13	0.3	.	.	3	0.0	.	.	.	0.0	.	.	16	0.1
Heterosexual Contact subtotal	8	4.7	579	12.5	20	4.6	3,326	27.2	3	5.5	214	20.4	36	4.9	4,377	23.0
Sx w/ injecting drug user	1	.	90	.	1	.	328	.	.	.	17	.	3	.	459	.
Sx w/ bisexual male	.	.	35	.	1	.	141	.	.	.	3	.	1	.	190	.
Sx w/ person with hemophilia	.	.	8	.	.	.	1	.	.	.	.	.	.	.	9	.
Sx w/ transfusion recipient w/HIV	.	.	4	.	.	.	32	.	.	.	1	.	.	.	43	.
Sx w/HIV+ person, risk not specified	7	.	442	.	18	.	2,824	.	3	.	193	.	32	.	3,676	.
Receipt of blood transfusion/components	.	.	2	0.0	.	.	6	0.0	.	.	.	0.0	.	.	9	0.0
Adult Undetermined	63	36.8	762	16.5	195	44.7	2,918	23.9	22	40.0	292	27.8	317	43.5	4,253	22.3
<b>Total</b>	<b>171</b>	<b>100.0</b>	<b>4,625</b>	<b>100.0</b>	<b>436</b>	<b>100.0</b>	<b>12,232</b>	<b>100.0</b>	<b>55</b>	<b>100.0</b>	<b>1,050</b>	<b>100.0</b>	<b>728</b>	<b>100.0</b>	<b>19,033</b>	<b>100.0</b>

\* AIDS cases are included in counts of HIV cases.

\*\* See technical notes.

Note: Data in this report are provisional.

**Table 8b**  
**South Carolina Adult/Adolescent HIV/AIDS Cases\* by Sex, Exposure Category\*\*, and Race**  
**Cases diagnosed between January - December 2020 and Prevalence Through December 31, 2020**

	White				Black				Hispanic				Totals**			
	Jan. - Dec. 2020		Prevalence**		Jan. - Dec. 2020		Prevalence		Jan. - Dec. 2020		Prevalence		Jan. - Dec. 2020		Prevalence	
	Cases	%	Cases	%	Cases	%	Cases	%	Cases	%	Cases	%	Cases	%	Cases	%
<b>Male exposure category**</b>																
Men Who Have Sex With Men	82	58.6	2,723	72.4	214	62.8	5,002	59.3	28	63.6	462	54.7	347	60.0	8,666	62.7
Injecting Drug Use	7	5.0	154	4.1	4	1.2	453	5.4	1	2.3	45	5.3	13	2.2	692	5.0
Men Who Have Sex With Men & Inject Drugs	4	2.9	247	6.6	2	0.6	242	2.9	1	2.3	18	2.1	7	1.2	543	3.9
Hemophilia/Coagulation Disorder	.	.	12	0.3	.	.	2	0.0	.	.	.	0.0	.	.	14	0.1
Heterosexual Contact subtotal	2	1.4	129	3.4	5	1.5	1,092	13.0	.	0.0	93	11.0	8	1.4	1,385	10.0
Sx w/ injecting drug user	.	.	17	.	1	.	90	.	.	.	9	.	1	.	122	.
Sx w/ bisexual male	.	.	.	.	.	.	.	.	.	.	.	.	.	.	.	.
Sx w/ person with hemophilia	.	.	1	.	.	.	.	.	.	.	.	.	.	.	1	.
Sx w/ transfusion recipient w/HIV	.	.	.	.	.	.	8	.	.	.	.	.	.	.	10	.
Sx w/HIV+ person, risk not specified	2	.	111	.	4	.	994	.	.	.	84	.	7	.	1,252	.
Receipt of blood transfusion/components	.	.	2	0.1	.	.	1	0.0	.	.	.	0.0	.	.	3	0.0
Adult Undetermined	45	32.1	493	13.1	116	34.0	1,640	19.4	14	31.8	226	26.8	203	35.1	2,527	18.3
<b>Total</b>	<b>140</b>	<b>100.0</b>	<b>3,760</b>	<b>100.0</b>	<b>341</b>	<b>100.0</b>	<b>8,432</b>	<b>100.0</b>	<b>44</b>	<b>100.0</b>	<b>844</b>	<b>100.0</b>	<b>578</b>	<b>100.0</b>	<b>13,830</b>	<b>100.0</b>
<b>Female exposure category**</b>																
Injecting Drug Use	7	22.6	145	16.8	1	1.1	282	7.4	.	0.0	19	9.2	8	5.3	477	9.2
Hemophilia/Coagulation Disorder	.	.	1	0.1	.	.	1	0.0	.	.	.	0.0	.	.	2	0.0
Heterosexual Contact subtotal	6	19.4	450	52.0	15	15.8	2,234	58.8	3	27.3	121	58.7	28	18.7	2,992	57.5
Sx w/ injecting drug user	1	.	73	.	.	.	238	.	.	.	8	.	2	.	337	.
Sx w/ bisexual male	.	.	35	.	1	.	141	.	.	.	3	.	1	.	190	.
Sx w/ person with hemophilia	.	.	7	.	.	.	1	.	.	.	.	.	.	.	8	.
Sx w/ transfusion recipient w/HIV	.	.	4	.	.	.	24	.	.	.	1	.	.	.	33	.
Sx w/HIV+ person, risk not specified	5	.	331	.	14	.	1,830	.	3	.	109	.	25	.	2,424	.
Receipt of blood transfusion/components	.	.	.	0.0	.	.	5	0.1	.	.	.	0.0	.	.	6	0.1
Adult Undetermined	18	58.1	269	31.1	79	83.2	1,278	33.6	8	72.7	66	32.0	114	76.0	1,726	33.2
<b>Total</b>	<b>31</b>	<b>100.0</b>	<b>865</b>	<b>100.0</b>	<b>95</b>	<b>100.0</b>	<b>3,800</b>	<b>100.0</b>	<b>11</b>	<b>100.0</b>	<b>206</b>	<b>100.0</b>	<b>150</b>	<b>100.0</b>	<b>5,203</b>	<b>100.0</b>

\* AIDS cases are included in counts of HIV cases.

\*\* See technical notes.

Note: Data in this report are provisional.

**Table 9**  
**South Carolina Prevalence\* HIV/AIDS Summary\*\* Through December 31, 2020**

Race/Ethnicity	Adult/Adolescent		Pediatric (<=12 years)		Total	
	Cases	%	Cases	%	Cases	%
White, Not Hispanic	4,625	24.3	29	9.8	4,654	24.1
Black, Not Hispanic	12,232	64.3	213	72.0	12,445	64.4
Hispanic	1,050	5.5	18	6.1	1,068	5.5
Asian/Pacific Islander	68	0.4	5	1.7	73	0.4
American Indian/Alaskan	17	0.1	.	0.0	17	0.1
Other	947	5.0	31	10.5	978	5.1
Unknown	94	0.5	.	0.0	94	0.5
<b>Total</b>	<b>19,033</b>	<b>100.0</b>	<b>296</b>	<b>100.0</b>	<b>19,329</b>	<b>100.0</b>

Age* (as of 12/31/2020) by Race	White		Black		Hispanic		Total	
	Cases	%	Cases	%	Cases	%	Cases	%
<= 12	6	0.1	61	0.5	7	0.7	90	0.5
13-19	10	0.2	65	0.5	5	0.5	92	0.5
20-24	65	1.4	386	3.1	35	3.3	528	2.7
25-29	212	4.6	1,036	8.3	70	6.6	1,433	7.4
30-39	700	15.0	2,509	20.2	258	24.2	3,710	19.2
40-49	875	18.8	2,264	18.2	317	29.7	3,699	19.1
50-59	1,647	35.4	3,450	27.7	238	22.3	5,615	29.0
Over 59	1,139	24.5	2,674	21.5	138	12.9	4,162	21.5
<b>Total</b>	<b>4,654</b>	<b>100.0</b>	<b>12,445</b>	<b>100.0</b>	<b>1,068</b>	<b>100.0</b>	<b>19,329</b>	<b>100.0</b>

Exposure Category* by Gender	Males		Females		Totals	
	Cases	%	Cases	%	Cases	%
<b>Adult/adolescent</b>						
Men Who Have Sex With Men	8,666	62.7	.	0.0	8,666	45.5
Injecting Drug Use	692	5.0	477	9.2	1,169	6.1
Men Who Have Sex With Men & Inject Drugs	543	3.9	.	0.0	543	2.9
Adult Hemophilia/Coagulation Disorder	14	0.1	2	0.0	16	0.1
Heterosexual Contact	1,385	10.0	2,992	57.5	4,377	23.0
Adult Receipt of Blood Transfusion/Components	3	0.0	6	0.1	9	0.0
Adult Confirmed Other	.	0.0	.	0.0	.	0.0
Adult Undetermined	2,527	18.3	1,726	33.2	4,253	22.3
<b>Total</b>	<b>13,830</b>	<b>100.0</b>	<b>5,203</b>	<b>100.0</b>	<b>19,033</b>	<b>100.0</b>
<b>Pediatric (&lt;13 years old)</b>						
Child Hemophilia/Coagulation Disorder	1	0.8	.	0.0	1	0.3
Mother with HIV/AIDS	115	92.7	141	82.0	256	86.5
Child Confirmed Other	.	0.0	3	1.7	3	1.0
Ped Undetermined	6	4.8	23	13.4	29	9.8
<b>Total</b>	<b>124</b>	<b>100.0</b>	<b>172</b>	<b>100.0</b>	<b>296</b>	<b>100.0</b>
<b>Total</b>	<b>13,954</b>	<b>100.0</b>	<b>5,375</b>	<b>100.0</b>	<b>19,329</b>	<b>100.0</b>

\* See Technical Notes.

\*\* AIDS cases are included in counts of HIV cases.

Note: Data in this report are provisional.

**Table 10**  
**South Carolina HIV/AIDS Cases\* in Adolescents and Adults Under Age 25, by Sex, Exposure Category\*\***  
**Incidence Cases Diagnosed January - December 2019 and January - December 2020**  
**Prevalence\*\* Cases through December 31, 2020**

	Ages 13 - 19						Ages 20 - 24					
	Jan. - Dec. 2019		Jan. - Dec. 2020		Prevalence		Jan. - Dec. 2019		Jan. - Dec. 2020		Prevalence	
	Cases	%	Cases	%	Cases	%	Cases	%	Cases	%	Cases	%
<b>Male exposure category</b>												
Men Who Have Sex With Men	33	73.3	23	92.0	37	58.7	120	82.8	84	77.8	371	80.7
Injecting Drug Use	.	0.0	.	0.0	.	0.0	1	0.7	.	0.0	1	0.2
Men Who Have Sex With Men & Inject Drugs	.	0.0	.	0.0	.	0.0	3	2.1	2	1.9	4	0.9
Heterosexual Contact subtotal	.	0.0	.	0.0	1	1.6	1	0.7	1	0.9	3	0.7
Sx w/ injecting drug user	.	.	.	.	.	.	.	.	.	.	.	.
Sx w/ bisexual male	.	.	.	.	.	.	.	.	.	.	.	.
Sx w/ transfusion recipient w/HIV	.	.	.	.	.	.	.	.	.	.	.	.
Sx w/HIV+ person, risk not specified	.	.	.	.	1	.	1	.	1	.	3	.
Adult Undetermined	12	26.7	2	8.0	9	14.3	20	13.8	21	19.4	65	14.1
Mother with/at risk for HIV infection:	.	.	.	.	15	23.8	.	.	.	.	15	3.3
Has HIV infection, risk not specified	.	.	.	.	15	.	.	.	.	.	15	.
Child Undetermined	.	.	.	.	1	1.6	.	.	.	.	1	0.2
Confirmed Other	.	.	.	.	.	0.0	.	.	.	.	.	0.0
<b>Total</b>	<b>45</b>	<b>100.0</b>	<b>25</b>	<b>100.0</b>	<b>63</b>	<b>100.0</b>	<b>145</b>	<b>100.0</b>	<b>108</b>	<b>100.0</b>	<b>460</b>	<b>100.0</b>
<b>Female exposure category</b>												
Injecting Drug Use	.	0.0	.	0.0	.	0.0	1	9.1	.	0.0	2	2.9
Heterosexual Contact subtotal	2	66.7	.	0.0	2	6.9	3	27.3	5	33.3	23	33.8
Sx w/ injecting drug user	.	.	.	.	.	.	.	.	.	.	1	.
Sx w/ bisexual male	.	.	.	.	1	.	.	.	1	.	1	.
Sx w/ transfusion recipient w/HIV	.	.	.	.	.	.	.	.	.	.	2	.
Sx w/HIV+ person, risk not specified	2	.	.	.	1	.	3	.	4	.	19	.
Adult Undetermined	1	33.3	3	100.0	5	17.2	7	63.6	10	66.7	23	33.8
Mother with/at risk for HIV infection:	.	.	.	.	18	62.1	.	.	.	.	13	19.1
Has HIV infection, risk not specified	.	.	.	.	18	.	.	.	.	.	13	.
Child Undetermined	.	.	.	.	4	13.8	.	.	.	.	6	8.8
Confirmed Other	.	.	.	.	.	0.0	.	.	.	.	1	1.5
<b>Total</b>	<b>3</b>	<b>100.0</b>	<b>3</b>	<b>100.0</b>	<b>29</b>	<b>100.0</b>	<b>11</b>	<b>100.0</b>	<b>15</b>	<b>100.0</b>	<b>68</b>	<b>100.0</b>

\* AIDS cases are included in counts of HIV cases.

\*\* See Technical Notes.

Note: Data in this report are provisional.

**Table 11**  
**South Carolina Prevalence\* HIV/AIDS Summary\*\* Through December 31, 2020**

Age Group*	Male		Female		Total	
	Cases	%	Cases	%	Cases	%
<b>Race: White</b>						
<= 12	3	0.1	3	0.3	6	0.1
13-19	6	0.2	4	0.5	10	0.2
20-24	53	1.4	12	1.4	65	1.4
25-29	181	4.8	31	3.5	212	4.6
30-39	522	13.8	178	20.2	700	15.0
40-49	677	17.9	198	22.5	875	18.8
50-59	1,373	36.4	274	31.1	1,647	35.4
Over 59	959	25.4	180	20.5	1,139	24.5
Total	3,774	100.0	880	100.0	4,654	100.0
<b>Race: Black</b>						
<= 12	32	0.4	29	0.7	61	0.5
13-19	47	0.6	18	0.5	65	0.5
20-24	343	4.0	43	1.1	386	3.1
25-29	877	10.3	159	4.1	1,036	8.3
30-39	1,968	23.1	541	13.8	2,509	20.2
40-49	1,370	16.1	894	22.8	2,264	18.2
50-59	2,215	26.0	1,235	31.5	3,450	27.7
Over 59	1,674	19.6	1,000	25.5	2,674	21.5
Total	8,526	100.0	3,919	100.0	12,445	100.0
<b>Race: Hispanic</b>						
<= 12	3	0.4	4	1.9	7	0.7
13-19	3	0.4	2	0.9	5	0.5
20-24	30	3.5	5	2.3	35	3.3
25-29	59	6.9	11	5.1	70	6.6
30-39	212	24.9	46	21.3	258	24.2
40-49	255	29.9	62	28.7	317	29.7
50-59	191	22.4	47	21.8	238	22.3
Over 59	99	11.6	39	18.1	138	12.9
Total	852	100.0	216	100.0	1,068	100.0
<b>Race: Other</b>						
<= 12	5	0.7	11	3.3	16	1.5
13-19	4	0.5	5	1.5	9	0.8
20-24	30	4.1	7	2.1	37	3.5
25-29	83	11.4	28	8.3	111	10.4
30-39	175	24.0	41	12.1	216	20.2
40-49	144	19.7	87	25.7	231	21.6
50-59	167	22.9	90	26.6	257	24.1
Over 59	122	16.7	69	20.4	191	17.9
Total	730	100.0	338	100.0	1,068	100.0
<b>Race: Total</b>						
<= 12	43	0.3	47	0.9	90	0.5
13-19	63	0.5	29	0.5	92	0.5
20-24	460	3.3	68	1.3	528	2.7
25-29	1,204	8.6	229	4.3	1,433	7.4
30-39	2,896	20.8	814	15.1	3,710	19.2
40-49	2,454	17.6	1,245	23.2	3,699	19.1
50-59	3,966	28.4	1,649	30.7	5,615	29.0
Over 59	2,868	20.6	1,294	24.1	4,162	21.5
Total	13,954	100.0	5,375	100.0	19,329	100.0

\* See technical notes.

\*\* AIDS cases are included in counts of HIV cases.

Note: Data in this report are provisional.



**Table 12**  
**South Carolina Adolescent (Age 13-19) HIV/AIDS Summary\* Prevalence\*\* Through December 31, 2020**

by Race	AIDS Cases		HIV/AIDS Cases	
	Cases	%	Cases	%
White, Not Hispanic	1	7.1	10	10.9
Black, Not Hispanic	9	64.3	65	70.7
Hispanic	2	14.3	5	5.4
Asian/Pacific Islander	1	7.1	4	4.3
American Indian/Alaskan	.	.	.	.
Other	1	7.1	5	5.4
Unknown	14	100.0	3	3.3
Total	.	.	92	100.0

AIDS Cases, Exposure by Sex						
Exposure Category** by Gender	Males		Females		Totals	
	Cases	%	Cases	%	Cases	%
Men Who Have Sex With Men	7	70.0	.	0.0	7	50.0
Injecting Drug Use	.	.	.	.	.	.
Men Who Have Sex With Men & Inject Drugs	.	.	.	.	.	.
Adult Hemophilia/Coagulation Disorder	.	.	.	.	.	.
Heterosexual Contact	1	10.0	.	0.0	1	7.1
Adult Receipt of Blood Transfusion/Components	.	.	.	.	.	.
Adult Confirmed Other	.	.	.	.	.	.
Adult Undetermined	1	10.0	1	25.0	2	14.3
Child Hemophilia/Coagulation Disorder	.	.	.	.	.	.
Mother with HIV/AIDS	1	10.0	3	75.0	4	28.6
Child Receipt of Blood Transfusion/Components	.	.	.	.	.	.
Child Confirmed Other	.	.	.	.	.	.
Ped Undetermined	.	.	.	.	.	.
<b>Total</b>	<b>10</b>	<b>100.0</b>	<b>4</b>	<b>100.0</b>	<b>14</b>	<b>100.0</b>

HIV/AIDS Cases, Exposure by Sex						
Exposure Category** by Gender	Males		Females		Totals	
	Cases	%	Cases	%	Cases	%
Men Who Have Sex With Men	37	58.7	.	0.0	37	40.2
Injecting Drug Use	.	.	.	.	.	.
Men Who Have Sex With Men & Inject Drugs	.	.	.	.	.	.
Adult Hemophilia/Coagulation Disorder	.	.	.	.	.	.
Heterosexual Contact	1	1.6	2	6.9	3	3.3
Adult Receipt of Blood Transfusion/Components	.	.	.	.	.	.
Adult Confirmed Other	.	.	.	.	.	.
Adult Undetermined	10	15.9	5	17.2	15	16.3
Child Hemophilia/Coagulation Disorder	.	.	.	.	.	.
Mother with HIV/AIDS	14	22.2	18	62.1	32	34.8
Child Receipt of Blood Transfusion/Components	.	.	.	.	.	.
Child Confirmed Other	.	.	.	.	.	.
Ped Undetermined	1	1.6	4	13.8	5	5.4
<b>Total</b>	<b>63</b>	<b>100.0</b>	<b>29</b>	<b>100.0</b>	<b>92</b>	<b>100.0</b>

\* AIDS cases are included in counts of HIV cases.

\*\* See technical notes.

Note: Data in this report are provisional.

**Table 13**  
**South Carolina Women of Childbearing Age (15-45) HIV/AIDS Summary\* Prevalence\*\* Through December 31, 2020**

Race/Ethnicity	AIDS Cases		HIV/AIDS Cases	
	Cases	%	Cases	%
White, Not Hispanic	122	15.3	336	18.3
Black, Not Hispanic	569	71.1	1,257	68.6
Hispanic	50	6.3	107	5.8
Asian/Pacific Islander	2	0.3	8	0.4
American Indian/Alaskan	.	.	1	0.1
Other	55	6.9	113	6.2
Unknown	2	0.3	10	0.5
<b>Total</b>	<b>800</b>	<b>100.0</b>	<b>1,832</b>	<b>100.0</b>

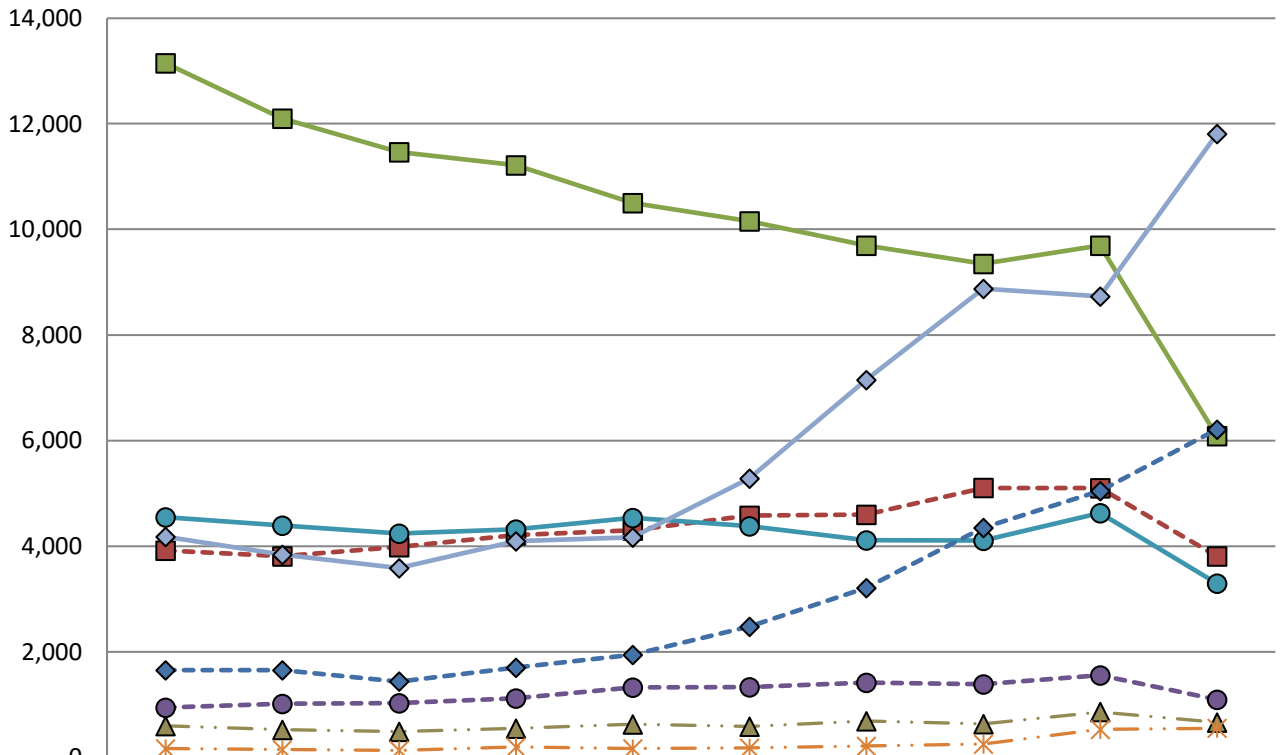
AIDS Cases, Exposure by Age Group										
Exposure Category**	Ages 15-19		Ages 20-24		Ages 25-29		Ages 30-45		Totals	
	Cases	%	Cases	%	Cases	%	Cases	%	Cases	%
Injecting Drug Use	.	0.0	.	0.0	.	0.0	48	6.8	48	6.0
Adult Hemophilia/Coagulation Disorder	.	.	.	.	.	.	.	.	.	.
Heterosexual Contact	.	0.0	4	18.2	23	31.9	442	63.0	469	58.6
Adult Receipt of Blood Transfusion/Components	.	0.0	.	0.0	.	0.0	1	0.1	1	0.1
Adult Confirmed Other	.	0.0	.	0.0	1	1.4	.	0.0	1	0.1
Adult Undetermined	1	25.0	4	18.2	22	30.6	189	26.9	216	27.0
Child Hemophilia/Coagulation Disorder	.	.	.	.	.	.	.	.	.	.
Mother with HIV/AIDS	3	75.0	11	50.0	24	33.3	19	2.7	57	7.1
Child Receipt of Blood Transfusion/Components	.	.	.	.	.	.	.	.	.	.
Child Confirmed Other	.	0.0	.	0.0	1	1.4	.	0.0	1	0.1
Ped Undetermined	.	0.0	3	13.6	1	1.4	3	0.4	7	0.9
<b>Total</b>	<b>4</b>	<b>100.0</b>	<b>22</b>	<b>100.0</b>	<b>72</b>	<b>100.0</b>	<b>702</b>	<b>100.0</b>	<b>800</b>	<b>100.0</b>

HIV/AIDS Cases, Exposure by Age Group										
Exposure Category**	Ages 15-19		Ages 20-24		Ages 25-29		Ages 30-45		Totals	
	Cases	%	Cases	%	Cases	%	Cases	%	Cases	%
Injecting Drug Use	.	0.0	2	2.9	4	1.7	90	5.9	96	5.2
Adult Hemophilia/Coagulation Disorder	.	.	.	.	.	.	.	.	.	.
Heterosexual Contact	2	9.1	23	33.8	96	41.9	877	58.0	998	54.5
Adult Receipt of Blood Transfusion/Components	.	0.0	.	0.0	.	0.0	1	0.1	1	0.1
Adult Confirmed Other	.	0.0	.	0.0	3	1.3	1	0.1	4	0.2
Adult Undetermined	5	22.7	23	33.8	81	35.4	511	33.8	620	33.8
Child Hemophilia/Coagulation Disorder	.	.	.	.	.	.	.	.	.	.
Mother with HIV/AIDS	13	59.1	13	19.1	40	17.5	28	1.9	94	5.1
Child Receipt of Blood Transfusion/Components	.	.	.	.	.	.	.	.	.	.
Child Confirmed Other	.	0.0	1	1.5	2	0.9	.	0.0	3	0.2
Ped Undetermined	2	9.1	6	8.8	3	1.3	5	0.3	16	0.9
<b>Total</b>	<b>22</b>	<b>100.0</b>	<b>68</b>	<b>100.0</b>	<b>229</b>	<b>100.0</b>	<b>1,513</b>	<b>100.0</b>	<b>1,832</b>	<b>100.0</b>

\* AIDS cases are included in counts of HIV cases.

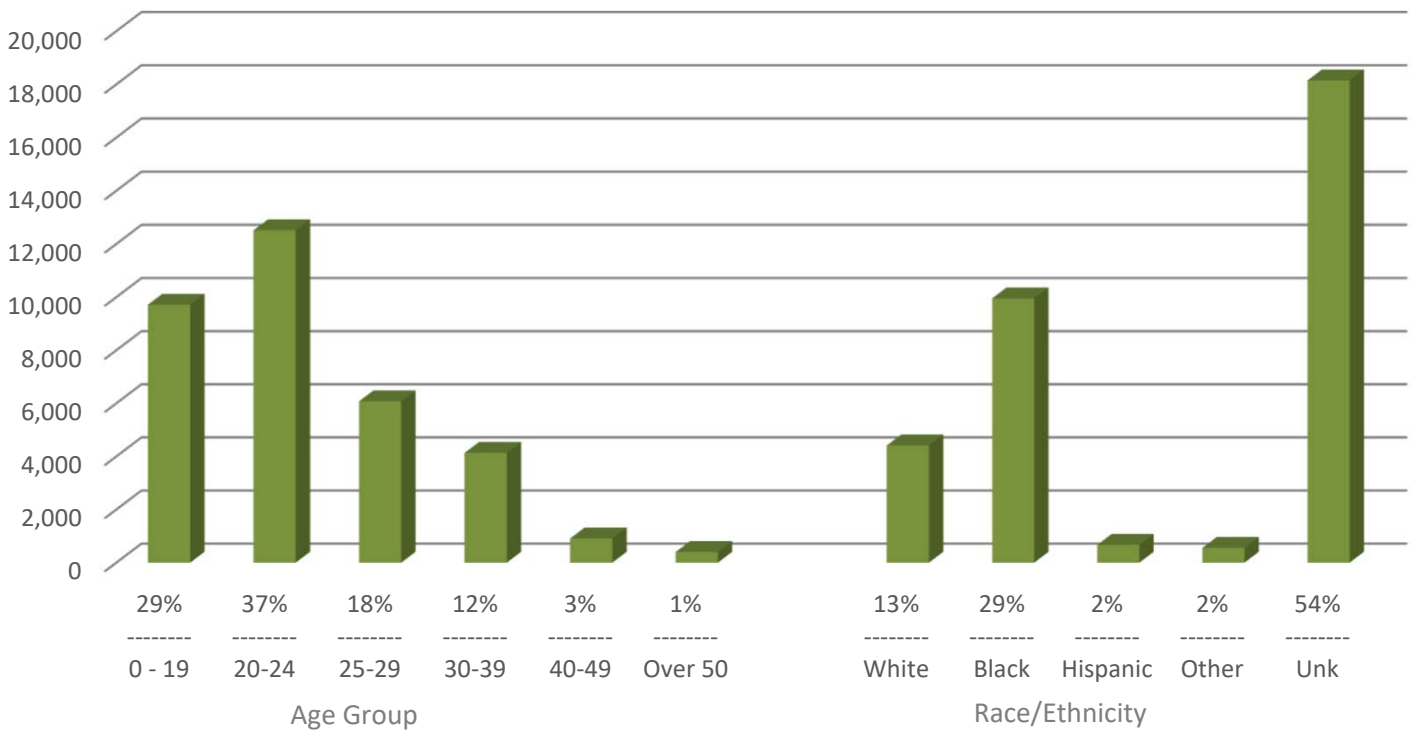
\*\* See technical notes.

### South Carolina Chlamydia Cases by Year of Diagnosis by Race\* and Sex



	2011	2012	2013	2014	2015	2016	2017	2018	2019	2020
Black Male	3919	3813	3989	4208	4302	4579	4596	5105	5101	3812
Black Female	13148	12099	11465	11215	10500	10153	9693	9349	9693	6091
White Male	946	1017	1032	1124	1329	1336	1415	1386	1558	1095
White Female	4552	4392	4244	4318	4539	4381	4114	4110	4629	3296
Hispanic M/F	600	525	492	553	632	587	692	634	866	666
Other M/F	170	150	139	200	171	182	220	257	531	556
Unknown Male	1654	1653	1441	1702	1947	2481	3214	4352	5044	6211
Unknown Female	4181	3844	3588	4095	4167	5286	7152	8877	8730	11807

### South Carolina 2020 Chlamydia Cases Count and Percent



**Table 14a**  
**South Carolina Chlamydia Cases and Annual Rate\*, By County**

County	Jan. - December, 2018		Jan. - December, 2019		Jan. - December, 2020	
	Cases	Rate	Cases	Rate	Cases	Rate
Abbeville	143	582.7	127	517.8	97	397.5
Aiken	1,066	629.3	1,136	664.8	849	491.0
Allendale	123	1,381.6	104	1,197.1	87	1,044.3
Anderson	1,237	617.0	1,189	587.0	991	484.9
Bamberg	147	1,029.8	161	1,144.6	92	661.6
Barnwell	159	753.1	155	742.8	161	773.9
Beaufort	880	466.3	959	499.2	760	388.4
Berkeley	1,091	493.5	1,160	509.0	1,044	442.4
Calhoun	79	544.1	58	398.5	76	522.2
Charleston	2,859	704.4	3,191	775.6	2,800	669.9
Cherokee	538	942.6	449	783.6	408	711.8
Chester	234	725.6	257	797.0	219	679.4
Chesterfield	280	612.0	331	725.1	314	688.5
Clarendon	290	860.5	286	847.5	218	652.4
Colleton	312	828.5	301	798.9	245	653.7
Darlington	594	889.2	619	929.2	647	972.8
Dillon	337	1,101.3	328	1,076.2	274	902.3
Dorchester	912	567.7	1,126	691.6	1,182	713.2
Edgefield	133	491.6	141	517.2	129	475.7
Fairfield	154	687.4	174	778.6	171	775.2
Florence	1,172	848.3	1,337	966.8	1,157	840.9
Georgetown	419	673.1	376	599.9	244	385.1
Greenville	2,854	555.0	3,035	579.7	3,058	574.3
Greenwood	509	719.5	473	668.0	417	586.7
Hampton	133	687.3	152	790.8	143	792.1
Horry	1,870	543.4	2,047	578.1	1,853	507.0
Jasper	206	711.1	216	718.3	164	519.2
Kershaw	314	478.7	311	467.3	370	548.4
Lancaster	348	364.9	397	405.1	409	405.2
Laurens	408	609.0	411	609.0	418	615.8
Lee	202	1,178.4	190	1,129.1	169	1,011.9
Lexington	1,873	634.8	1,501	502.4	1,341	441.2
McCormick	37	393.2	44	465.0	30	318.1
Marion	318	1,024.5	337	1,099.3	302	1,001.4
Marlboro	258	977.3	211	807.9	223	871.7
Newberry	357	926.8	379	986.0	309	803.7
Oconee	304	387.9	324	407.3	312	389.9
Orangeburg	1,003	1,153.7	1,056	1,225.4	878	1,028.8
Pickens	620	496.3	670	528.0	640	500.1
Richland	4,391	1,059.2	4,985	1,199.0	5,432	1,296.3
Saluda	89	433.2	105	512.9	89	438.1
Spartanburg	1,873	596.7	1,919	600.1	1,981	607.3
Sumter	1,015	952.9	965	904.2	1,005	944.9
Union	199	726.0	248	907.9	146	540.9
Williamsburg	225	735.1	381	1,254.6	303	1,015.9
York	1,568	572.0	1,640	583.7	1,590	550.0
Not Reported	54	.	327	.	6	.
<b>Total</b>	<b>34,187</b>	<b>672.4</b>	<b>36,289</b>	<b>704.8</b>	<b>33,753</b>	<b>646.9</b>

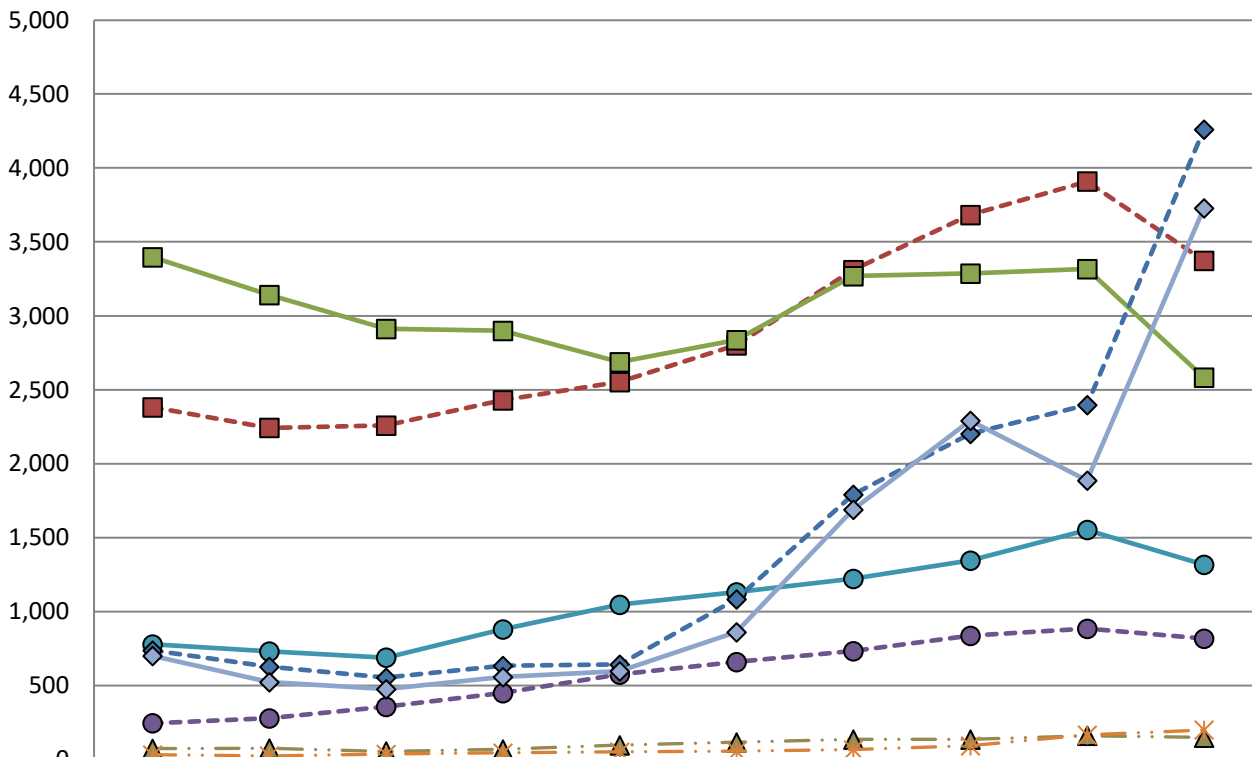
\* See technical notes.  
 Note: Data in this report are provisional.

**Table 14b**  
**South Carolina Chlamydia Cases and Annual Rate\*, By Public Health Region\***

Region	Jan. - December, 2018		Jan. - December, 2019		Jan. - December, 2020	
	Cases	Rate	Cases	Rate	Cases	Rate
Lowcountry	7,745	1,554.8	8,484	1,689.6	7,471	1,480.6
Midlands	10,686	1,030.0	11,181	1,060.0	11,069	1,033.5
Pee Dee	6,980	595.4	7,408	624.3	6,709	556.4
Upstate	8,722	1,552.8	8,889	1,582.6	8,498	1,518.2
Not Reported	54	.	327	.	6	.
<b>Total</b>	<b>34,187</b>	<b>672.4</b>	<b>36,289</b>	<b>704.8</b>	<b>33,753</b>	<b>646.9</b>

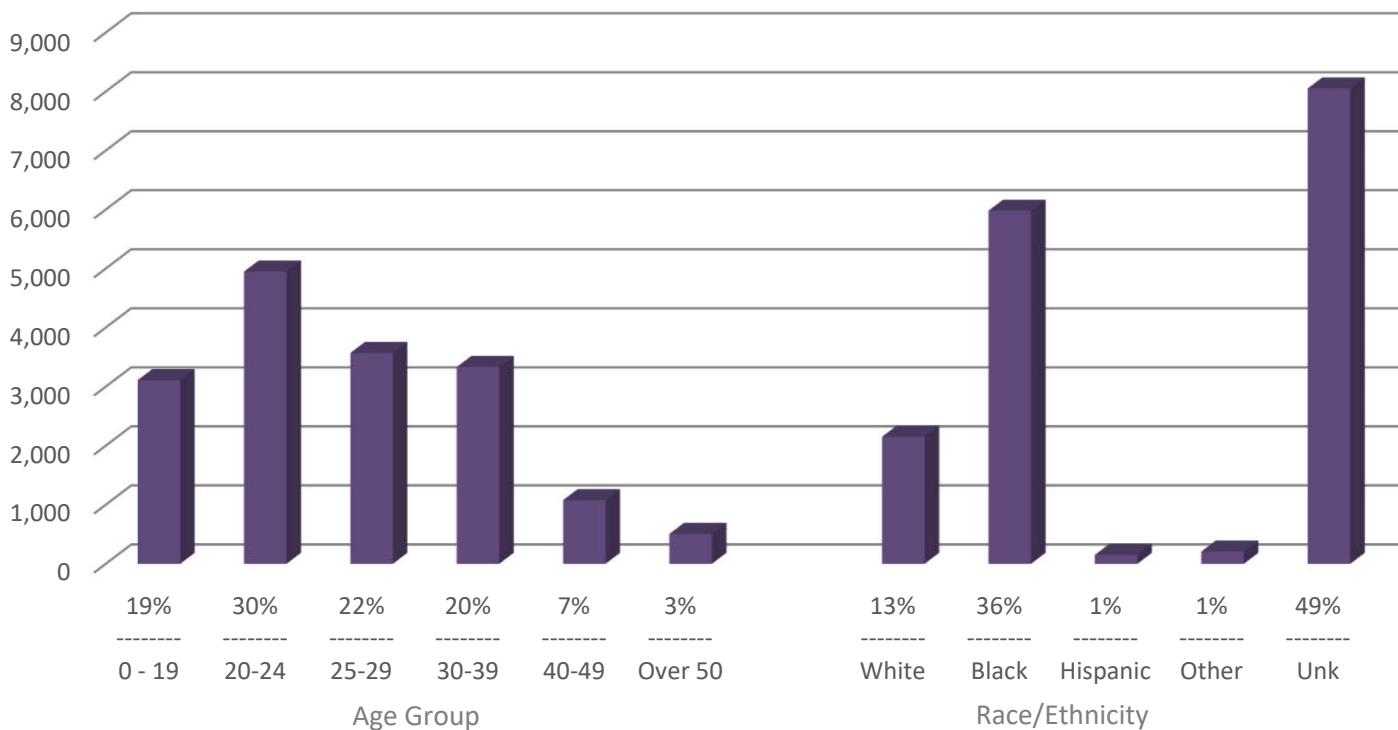
\* See technical notes.  
 Note: Data in this report are provisional.

### South Carolina Gonorrhea Cases by Year of Diagnosis by Race\* and Sex



	2011	2012	2013	2014	2015	2016	2017	2018	2019	2020
Black Male	2383	2243	2260	2431	2554	2802	3311	3683	3909	3374
Black Female	3398	3142	2912	2900	2687	2837	3269	3287	3318	2584
White Male	246	279	357	451	575	660	733	837	885	817
White Female	780	731	690	881	1048	1131	1222	1347	1553	1317
Hispanic M/F	73	76	56	69	97	116	136	137	162	149
Other M/F	32	25	37	45	52	57	67	94	167	201
Unknown Male	737	628	555	633	642	1085	1791	2203	2397	4260
Unknown Female	701	523	477	559	597	862	1691	2291	1887	3728

### South Carolina 2020 Gonorrhea Cases Count and Percent



**Table 15a**  
**South Carolina Gonorrhea Cases and Annual Rate\*, By County**

County	Jan. - December, 2018		Jan. - December, 2019		Jan. - December, 2020	
	Cases	Rate	Cases	Rate	Cases	Rate
Abbeville	61	248.6	62	252.8	66	270.4
Aiken	487	287.5	482	282.1	402	232.5
Allendale	51	572.8	21	241.7	44	528.1
Anderson	682	340.2	606	299.2	567	277.5
Bamberg	46	322.2	55	391.0	61	438.7
Barnwell	55	260.5	64	306.7	100	480.7
Beaufort	275	145.7	276	143.7	291	148.7
Berkeley	365	165.1	429	188.2	463	196.2
Calhoun	30	206.6	27	185.5	35	240.5
Charleston	1,001	246.6	1,198	291.2	1,328	317.7
Cherokee	316	553.6	266	464.2	206	359.4
Chester	62	192.2	62	192.3	103	319.6
Chesterfield	102	222.9	84	184.0	176	385.9
Clarendon	100	296.7	112	331.9	98	293.3
Colleton	106	281.5	117	310.5	121	322.8
Darlington	335	501.5	253	379.8	343	515.7
Dillon	105	343.1	213	698.8	188	619.1
Dorchester	297	184.9	358	219.9	489	295.0
Edgefield	73	269.9	52	190.8	53	195.4
Fairfield	64	285.7	75	335.6	63	285.6
Florence	539	390.1	704	509.1	637	463.0
Georgetown	218	350.2	174	277.6	124	195.7
Greenville	1,329	258.5	1,269	242.4	1,651	310.1
Greenwood	207	292.6	175	247.1	269	378.5
Hampton	50	258.4	52	270.5	72	398.8
Horry	738	214.4	713	201.4	798	218.4
Jasper	94	324.5	82	272.7	72	227.9
Kershaw	92	140.3	127	190.8	183	271.2
Lancaster	92	96.5	134	136.7	195	193.2
Laurens	140	209.0	175	259.3	255	375.6
Lee	73	425.9	91	540.8	69	413.1
Lexington	713	241.7	605	202.5	608	200.0
McCormick	15	159.4	21	221.9	17	180.3
Marion	118	380.2	136	443.6	143	474.2
Marlboro	101	382.6	109	417.3	121	473.0
Newberry	128	332.3	121	314.8	141	366.8
Oconee	173	220.7	131	164.7	229	286.2
Orangeburg	526	605.1	457	530.3	526	616.3
Pickens	239	191.3	227	178.9	308	240.7
Richland	1,860	448.7	1,926	463.2	2,472	589.9
Saluda	25	121.7	34	166.1	27	132.9
Spartanburg	769	245.0	822	257.0	1,055	323.4
Sumter	371	348.3	389	364.5	544	511.5
Union	92	335.6	104	380.7	79	292.7
Williamsburg	99	323.5	166	546.6	146	489.5
York	487	177.7	490	174.4	604	208.9
Not Reported	17	.	101	.	2	.
<b>Total</b>	<b>13,918</b>	<b>273.8</b>	<b>14,347</b>	<b>278.7</b>	<b>16,544</b>	<b>317.1</b>

\* See technical notes.  
 Note: Data in this report are provisional.

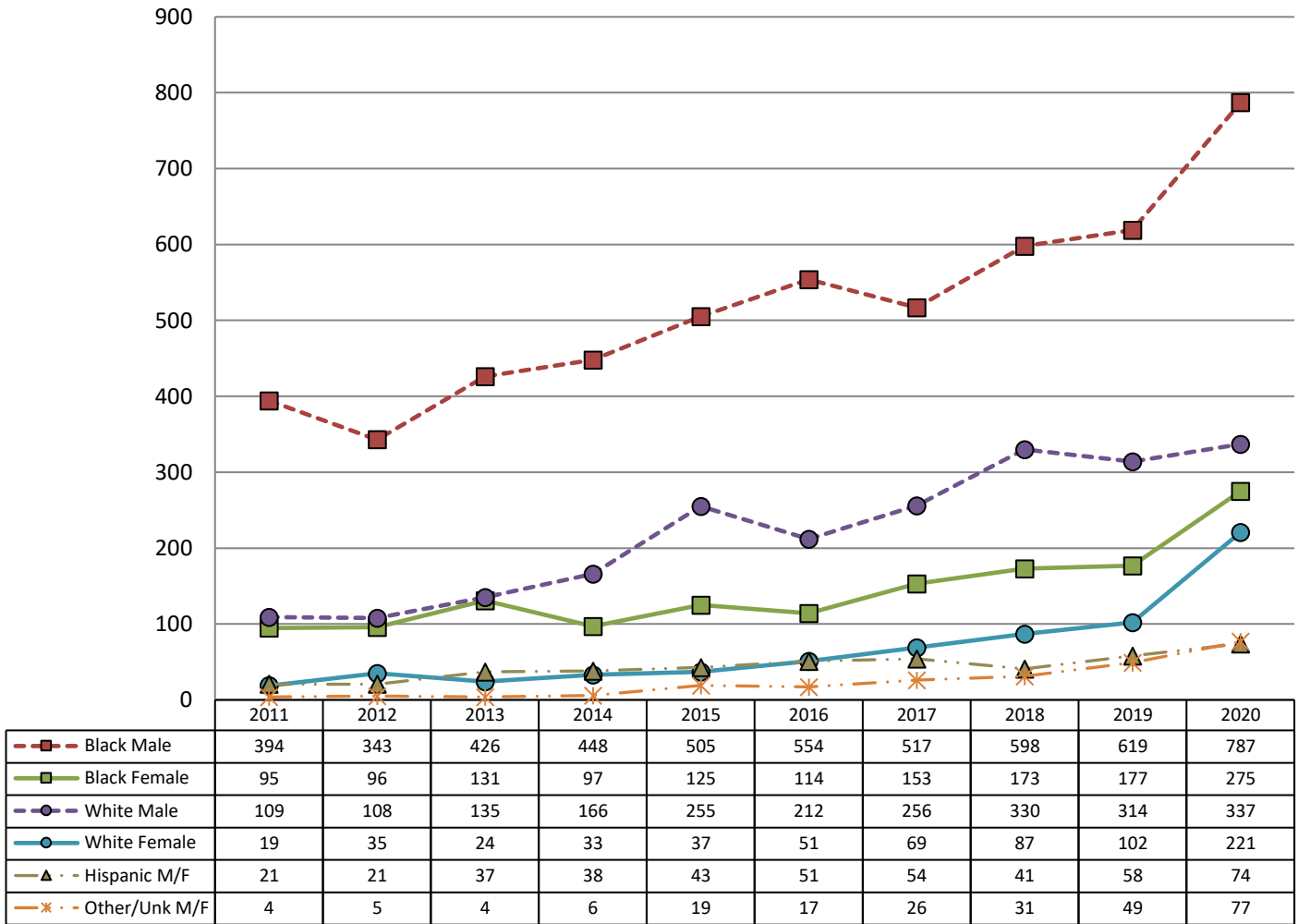
**Table 15b**  
**South Carolina Gonorrhea Cases and Annual Rate\*, By Public Health Region\***

Region	Jan. 1 - Dec. 31, 2018		Jan. 1 - Dec. 31, 2019		Jan. 1 - Dec. 31, 2020	
	Cases	Rate	Cases	Rate	Cases	Rate
Lowcountry	2,841	570.3	3,072	611.8	3,502	694.0
Midlands	4,138	398.8	4,172	395.5	4,951	462.3
Pee Dee	2,899	247.3	3,144	265.0	3,387	280.9
Upstate	4,023	716.2	3,858	686.9	4,702	840.0
Not Reported	17	.	101	.	2	.
<b>Total</b>	<b>13,918</b>	<b>273.8</b>	<b>14,347</b>	<b>278.7</b>	<b>16,544</b>	<b>317.1</b>

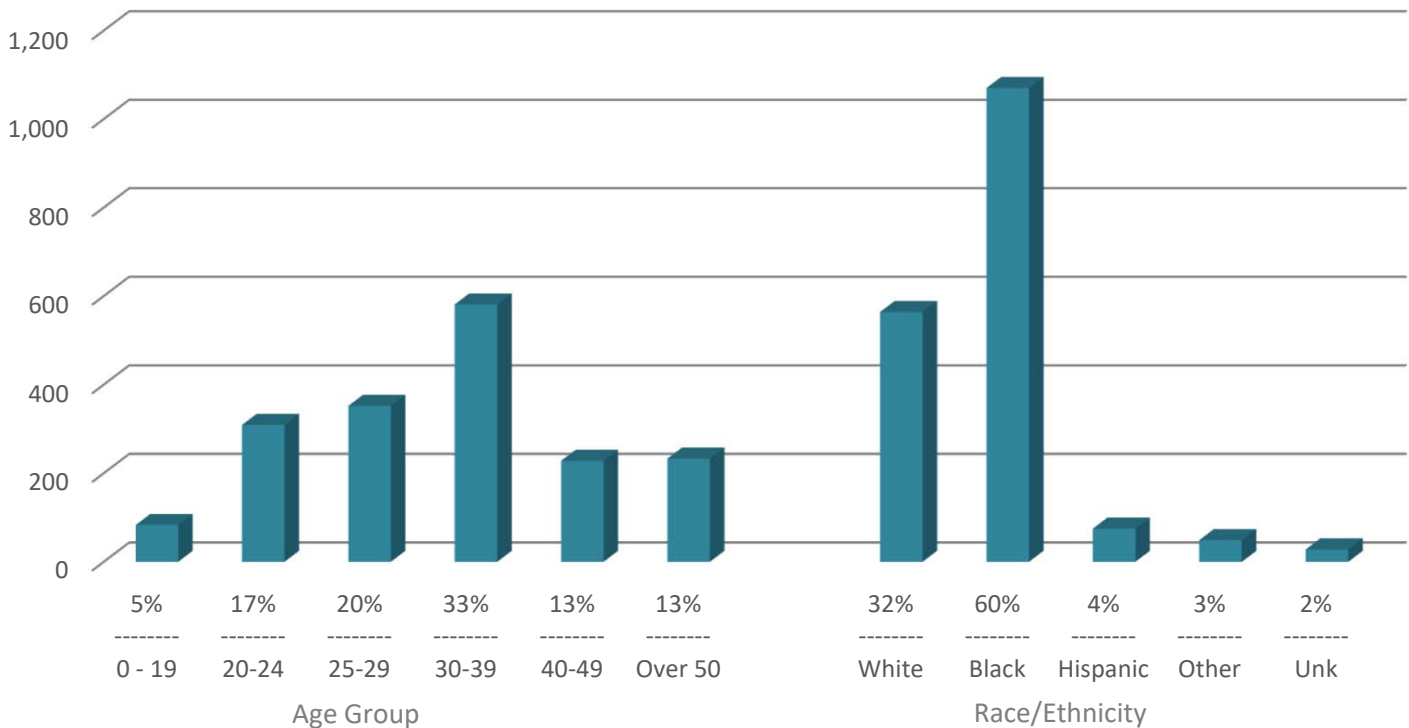
\* See technical notes.  
 Note: Data in this report are provisional.



## South Carolina Total Syphilis Cases by Year of Diagnosis by Race and Sex



## South Carolina 2020 Total Syphilis Cases Count and Percent



**Table 16a**  
**South Carolina Total Syphilis Cases\* and Annual Rate\*\*, By County**

County	Jan. - December, 2018		Jan. - December, 2019		Jan. - December, 2020	
	Cases	Rate	Cases	Rate	Cases	Rate
Abbeville	6	24.4	5	20.4	5	20.5
Aiken	63	37.2	68	39.8	57	33.0
Allendale	4	44.9	2	23.0	3	36.0
Anderson	47	23.4	57	28.1	64	31.3
Bamberg	5	35.0	2	14.2	3	21.6
Barnwell	1	4.7	5	24.0	14	67.3
Beaufort	25	13.2	24	12.5	33	16.9
Berkeley	40	18.1	30	13.2	64	27.1
Calhoun	3	20.7	2	13.7	0	0.0
Charleston	141	34.7	152	36.9	258	61.7
Cherokee	5	8.8	5	8.7	7	12.2
Chester	3	9.3	9	27.9	11	34.1
Chesterfield	7	15.3	4	8.8	1	2.2
Clarendon	2	5.9	4	11.9	2	6.0
Colleton	11	29.2	7	18.6	11	29.3
Darlington	16	24.0	14	21.0	19	28.6
Dillon	10	32.7	7	23.0	16	52.7
Dorchester	39	24.3	37	22.7	70	42.2
Edgefield	8	29.6	8	29.3	7	25.8
Fairfield	5	22.3	10	44.7	7	31.7
Florence	55	39.8	46	33.3	36	26.2
Georgetown	11	17.7	13	20.7	13	20.5
Greenville	118	22.9	127	24.3	204	38.3
Greenwood	14	19.8	34	48.0	39	54.9
Hampton	1	5.2	0	0.0	3	16.6
Horry	71	20.6	84	23.7	88	24.1
Jasper	5	17.3	3	10.0	5	15.8
Kershaw	11	16.8	8	12.0	13	19.3
Lancaster	9	9.4	10	10.2	18	17.8
Laurens	12	17.9	11	16.3	14	20.6
Lee	10	58.3	6	35.7	3	18.0
Lexington	53	18.0	70	23.4	82	27.0
McCormick	1	10.6	0	0.0	1	10.6
Marion	9	29.0	3	9.8	14	46.4
Marlboro	9	34.1	10	38.3	4	15.6
Newberry	4	10.4	6	15.6	11	28.6
Oconee	8	10.2	12	15.1	6	7.5
Orangeburg	34	39.1	31	36.0	46	53.9
Pickens	25	20.0	21	16.6	45	35.2
Richland	215	51.9	243	58.4	259	61.8
Saluda	0	0.0	6	29.3	4	19.7
Spartanburg	55	17.5	61	19.1	120	36.8
Sumter	35	32.9	30	28.1	36	33.8
Union	9	32.8	3	11.0	2	7.4
Williamsburg	14	45.7	10	32.9	16	53.6
York	31	11.3	28	10.0	52	18.0
Not Reported	1	.	2	.	0	.
<b>Total</b>	<b>1,261</b>	<b>24.8</b>	<b>1,330</b>	<b>25.8</b>	<b>1,786</b>	<b>34.2</b>

\* Data in this table includes all syphilis cases, not just infectious syphilis.

\*\* See technical notes.

Note: Data in this report are provisional.

**Table 16b**  
**South Carolina Total Syphilis Cases\* and Annual Rate\*\*, By Public Health Region\***

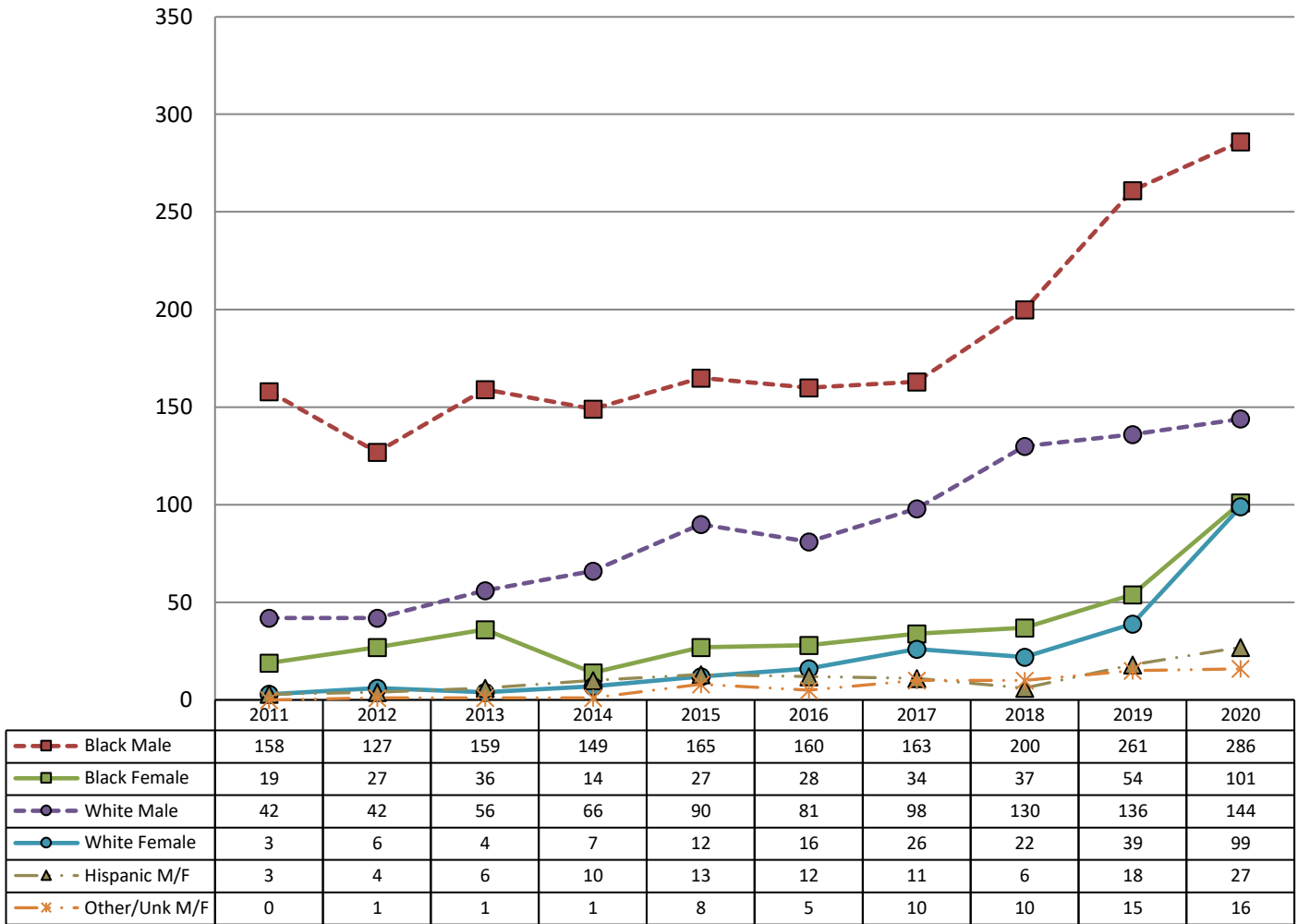
Region	Jan. 1 - Dec. 31, 2018		Jan. 1 - Dec. 31, 2019		Jan. 1 - Dec. 31, 2020	
	Cases	Rate	Cases	Rate	Cases	Rate
Lowcountry	308	61.8	290	57.8	496	98.3
Midlands	403	38.8	471	44.7	535	50.0
Pee Dee	249	21.2	231	19.5	248	20.6
Upstate	300	53.4	336	59.8	507	90.6
Not Reported	1	.	2	.	0	.
<b>Total</b>	<b>1,261</b>	<b>24.8</b>	<b>1,330</b>	<b>25.8</b>	<b>1,786</b>	<b>34.2</b>

\* Data in this table includes all syphilis cases, not just infectious syphilis.

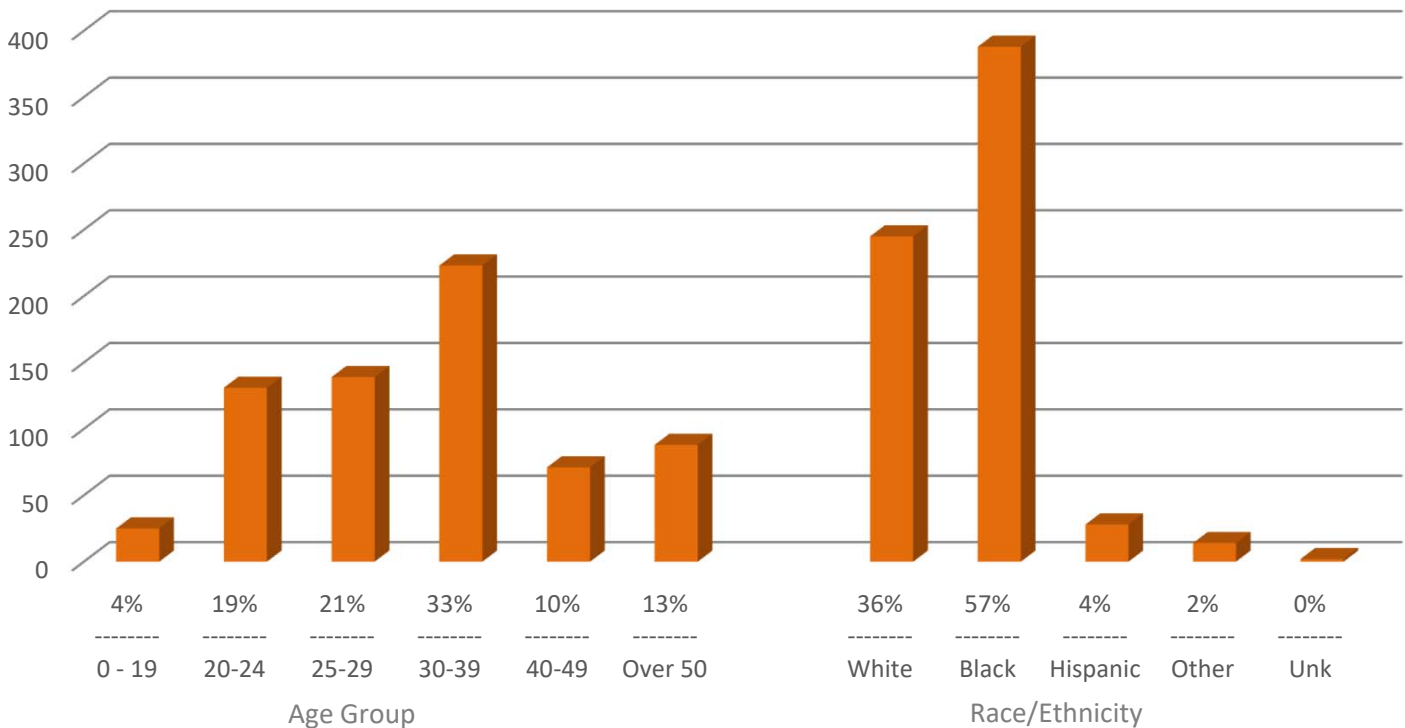
\*\* See technical notes.

Note: Data in this report are provisional.

## South Carolina Primary and Secondary Syphilis Cases by Diagnosis Year, Race and Sex



## South Carolina 2020 Primary and Secondary Syphilis Cases Count and Percent



**Table 17**  
**South Carolina Primary and Secondary Syphilis Cases and Annual Rate\*, By County**

County	Jan. - December, 2018		Jan. - December, 2019		Jan. - December, 2020	
	Cases	Rate	Cases	Rate	Cases	Rate
Abbeville	2	8.1	4	16.3	4	16.4
Aiken	23	13.6	31	18.1	22	12.7
Allendale	1	11.2	0	0.0	1	12.0
Anderson	21	10.5	29	14.3	42	20.6
Bamberg	2	14.0	1	7.1	0	0.0
Barnwell	0	0.0	1	4.8	5	24.0
Beaufort	9	4.8	14	7.3	6	3.1
Berkeley	7	3.2	7	3.1	22	9.3
Calhoun	.	.	.	.	.	.
Charleston	54	13.3	59	14.3	76	18.2
Cherokee	2	3.5	0	0.0	3	5.2
Chester	2	6.2	1	3.1	2	6.2
Chesterfield	2	4.4	1	2.2	1	2.2
Clarendon	2	5.9	3	8.9	0	0.0
Colleton	3	8.0	2	5.3	2	5.3
Darlington	7	10.5	5	7.5	14	21.0
Dillon	2	6.5	0	0.0	8	26.3
Dorchester	6	3.7	8	4.9	19	11.5
Edgefield	7	25.9	3	11.0	3	11.1
Fairfield	1	4.5	4	17.9	3	13.6
Florence	15	10.9	20	14.5	16	11.6
Georgetown	3	4.8	5	8.0	4	6.3
Greenville	37	7.2	70	13.4	106	19.9
Greenwood	8	11.3	15	21.2	21	29.5
Hampton	.	.	.	.	.	.
Horry	22	6.4	23	6.5	37	10.1
Jasper	1	3.5	0	0.0	0	0.0
Kershaw	3	4.6	4	6.0	4	5.9
Lancaster	4	4.2	8	8.2	9	8.9
Laurens	5	7.5	9	13.3	8	11.8
Lee	1	5.8	4	23.8	1	6.0
Lexington	11	3.7	24	8.0	23	7.6
McCormick	0	0.0	0	0.0	1	10.6
Marion	3	9.7	0	0.0	9	29.8
Marlboro	3	11.4	3	11.5	1	3.9
Newberry	0	0.0	3	7.8	7	18.2
Oconee	4	5.1	5	6.3	3	3.7
Orangeburg	12	13.8	7	8.1	7	8.2
Pickens	13	10.4	11	8.7	28	21.9
Richland	66	15.9	83	20.0	76	18.1
Saluda	0	0.0	4	19.5	2	9.8
Spartanburg	20	6.4	29	9.1	47	14.4
Sumter	8	7.5	12	11.2	12	11.3
Union	6	21.9	1	3.7	0	0.0
Williamsburg	4	13.1	5	16.5	4	13.4
York	4	1.5	8	2.8	18	6.2
Not Reported	0	.	1	.	0	.
<b>Total</b>	<b>406</b>	<b>8.0</b>	<b>527</b>	<b>10.2</b>	<b>677</b>	<b>13.0</b>

\* See technical notes.  
 Note: Data in this report are provisional.

**Table 17a**  
**South Carolina Primary and Secondary Syphilis Cases and Annual Rate\*, By Public Health Region\***

Region	Jan. 1 - Dec. 31, 2018		Jan. 1 - Dec. 31, 2019		Jan. 1 - Dec. 31, 2020	
	Cases	Rate	Cases	Rate	Cases	Rate
Lowcountry	95	19.1	98	19.5	133	26.4
Midlands	121	11.7	174	16.5	174	16.2
Pee Dee	72	6.1	81	6.8	107	8.9
Upstate	118	21.0	173	30.8	263	47.0
Not Reported	0	.	1	.	0	.
<b>Total</b>	<b>406</b>	<b>8.0</b>	<b>527</b>	<b>10.2</b>	<b>677</b>	<b>13.0</b>

\* See technical notes.  
 Note: Data in this report are provisional.

## TECHNICAL NOTES – December 31, 2020

---

**NOTICE:** Beginning with the 2015 Surveillance Report, Prevalence numbers (the number of people living with diagnosed HIV and/or AIDS) are based on Last Known Residence. This is a change from previous years' Prevalence numbers, which were based on Residence at Time of Diagnosis.

**This change makes comparisons with Surveillance Reports prior to 2015 inaccurate and should not be done.**

---

Data in this Surveillance report are provisional. The data are constantly updated to reflect the most accurate statistics.

### **Legal Reporting Requirements in South Carolina**

HIV infection and AIDS cases are reportable in South Carolina by law. All physicians, hospitals, laboratories, administrators of health care facilities, charitable or penal institutions, etc., are required to report HIV infections and AIDS cases to DHEC with identifiers (See S.C. Code Ann. Sections 44-29-10, 70, and 80 (Supp. 1989); 24A S.C. Code Ann. Reg. 61-20 (Supp. 1989) and 24A S.C. Code Ann. Reg 61-21 (as amended). All information regarding sexually transmitted diseases including HIV and AIDS, reported to DHEC must be kept strictly confidential (See S.C. Code Ann. Section 44-29-135 (Supp. 1989).

### **HIV/AIDS Surveillance and Reporting in South Carolina**

The South Carolina Department of Health and Environmental Control (DHEC) has conducted named HIV/AIDS surveillance since the 1980s. State law requires physicians, hospitals, laboratories, and other health facilities to report diagnosed HIV infection and AIDS cases to DHEC. Follow-up with persons newly diagnosed with HIV infection is conducted by health department staff, who provide partner notification and referral to medical and support services.

HIV/AIDS surveillance data is used by the Ryan White, HIV, and STD prevention programs in South Carolina. Surveillance data has been used since 1988 to initiate partner notification services. Surveillance data are also used extensively by HIV program staff to determine priority populations, identify unmet need and Community Viral Load, describe risk behaviors, and evaluate specific prevention and linkage to care efforts. Percent of total prevalence and incident HIV cases by region are calculated annually to determine prevention and care funding allocations to local public health regions and HIV prevention and care providers.

The CDC routinely sends states a program to evaluate the completeness and timeliness of HIV case reporting. The results of the evaluations show that case completeness (percent of expected number of persons newly diagnosed with HIV infection) in South Carolina is consistently in the 98-99% range, well above the national standard of 85%. The timeliness for HIV reporting in South Carolina is

consistently in the 96-97% range for reporting within 6 months, higher than the national standard of 66%. Several factors contribute to this success:

- 1) Both physicians and laboratories are required to report positive HIV confirmatory and screening tests, all CD4 T-Lymphocyte counts and all HIV Viral Load results. For cases diagnosed in South Carolina, on average, 88% have a CD4 or Viral Load reported within 3 months (national standard = 60%);
- 2) Approximately 75% of all HIV test information is submitted through Electronic Laboratory Reporting, which significantly decreases data entry and processing times; and
- 3) Active surveillance activities are conducted by four surveillance coordinators. These regional surveillance coordinators are located in the 4 largest cities of the state (Charleston, Columbia, Florence, and Greenville) and are responsible for surveillance in the immediate areas surrounding them.

Death ascertainment is accomplished by linking HIV Surveillance data with three death registers on an annual basis;

- 1) The National Death Index (NDI)
- 2) The Social Security Death Match (SSDM)
- 3) South Carolina's Vital Records Death Files

Note that deaths of persons with AIDS can be due to any cause (i.e., the death may or may not be related to HIV infection), and the category is therefore different from the designation deaths due to AIDS.

Age group tabulations for incidence are based on person's age at diagnosis of HIV or AIDS. Prevalence age group tabulations are based on person's age at end of prevalence year. Adult/adolescent cases include persons 13 years and older. Pediatric AIDS cases include children under 13 years of age. HIV positive children are not included in the HIV data until they are confirmed HIV positive at 18 months of age.



## CDC's HIV Case Definition

In April 2014, CDC published the Revised Surveillance Case Definition for HIV Infection — United States, 2014 ([www.cdc.gov/mmwr/preview/mmwrhtml/rr6303a1.htm?s\\_cid=rr6303a1\\_e](http://www.cdc.gov/mmwr/preview/mmwrhtml/rr6303a1.htm?s_cid=rr6303a1_e)). This surveillance case definition revises and combines the surveillance case definitions for human immunodeficiency virus (HIV) infection into a single case definition for persons of all ages (i.e., adults and adolescents aged  $\geq 13$  years and children aged  $< 13$  years). The revisions were made to address multiple issues, the most important of which was the need to adapt to recent changes in diagnostic criteria.

Laboratory criteria for defining a confirmed case now accommodate new multitest algorithms, including criteria for differentiating between HIV-1 and HIV-2 infection and for recognizing early HIV infection. The surveillance case definition is intended primarily for monitoring the HIV infection burden and planning for prevention and care on a population level, not as a basis for clinical decisions for individual patients.

A confirmed case can be classified in one of five HIV infection stages (0, 1, 2, 3, or unknown):

If there was a negative HIV test within 6 months of the first HIV infection diagnosis, the stage is 0, and remains 0 until 6 months after diagnosis.

- Otherwise, if a stage-3-defining opportunistic illness has been diagnosed, the stage is 3.
- Otherwise, the stage is determined by the CD4 test immunologic criteria shown in the following table:

**HIV infection stage, based on age-specific CD4+ T-lymphocyte count or CD4+ T-lymphocyte percentage of total lymphocytes\***

Stage*	Age on date of CD4 T-lymphocyte test					
	<1 year		1—5 years		6 years through adult	
	Cells/ $\mu$ L	%	Cells/ $\mu$ L	%	Cells/ $\mu$ L	%
1	$\geq 1,500$	$\geq 34$	$\geq 1,000$	$\geq 30$	$\geq 500$	$\geq 26$
2	750—1,499	26—33	500—999	22—29	200—499	14—25
3 (AIDS)	<750	<26	<500	<22	<200	<14

\*The stage is based primarily on the CD4+ T-lymphocyte count; the CD4+ T-lymphocyte count takes precedence over the CD4 T-lymphocyte percentage, and the percentage is considered only if the count is missing.

If none of the above apply (e.g., because of missing information on CD4 test results), the stage is U (unknown).

**Exposure Categories**

A hierarchy of exposure categories designed by the Centers for Disease Control has always been used for surveillance purposes. Persons with more than one reported mode of exposure are classified in the category listed first in the hierarchy, except for men who have sex with other men and inject drugs. They comprise a separate category. In addition, “undetermined” refers to persons whose mode of exposure to HIV is unknown. This includes persons who are currently under investigation, persons who died before exposure history was obtained, persons who are lost to follow-up, or persons who refused to be interviewed. DHEC uses a combined HIV/AIDS report form designed by the Centers for Disease Control to collect mode of exposure for HIV infection in both DHEC clinics and non-DHEC settings. South Carolina actively pursues risk information. For HIV cases diagnosed in 2014, risk was obtained in 63% of cases.

**Incidence/Prevalence/Rates/Totals**

**Incidence** is the number of cases of AIDS or HIV infection diagnosed in a specified time period. **Prevalence** is the number of persons living with AIDS or HIV infection at the end a specified time period (usually December 31 of the reporting year).

**Rates** are per 100,000 population based on census estimates. Rates in this report include:

**Prevalence rates:** the numerators for computing prevalence rates are based on the number of persons living with AIDS or HIV, by county of residence. The denominators for computing rates are based on most currently available census estimates (Health and Demographics Section, South Carolina Revenue and Fiscal Affairs Office). Each prevalence rate is computed as the number of living cases divided by the current year estimated population, multiplied by 100,000.

**Incidence rates:** the numerators for incidence rates are based on the number of new AIDS cases or HIV infection during the year of report. Incidence rates are computed as the number of new cases in the report year divided by the current year estimated population, multiplied by 100,000.

**Totals** may include individual for whom select variables are unknown (i.e. the State total may include individuals with an unknown county).

## CASE RESIDENCY AND DEDUPLICATION EFFORTS

### AIDS and HIV Case Reporting

All states and U.S. territories have some form of HIV/AIDS reporting that incorporates reporting by individual medical care providers and/or laboratories conducting HIV related tests. This national effort enables public health surveillance staff to track the scope of the AIDS epidemic. It also allows the federal government to allocate funds equitably to the states for the care of people with HIV and AIDS who cannot pay for all or part of their treatment.

All states and areas have been reporting AIDS cases since 1986. Because of advances in treatment that have extended the time between HIV infection and a diagnosis of AIDS, states began instituting HIV reporting in 1985 as a way of understanding how the epidemic has changed.

### Potential for Duplication

**The potential for duplication has become more of an issue because of the mobility of our society and also because of the success of treatment for HIV and AIDS.** Persons with HIV or AIDS may move for reasons related to their infection, for example, to be near family or friends, to seek social support services, to seek more knowledgeable physicians, to seek experimental drug programs, or because of inability to work due to HIV disease. With the advent and success of highly active antiretroviral therapy (HAART), those persons living relatively healthy lives may move for reasons unrelated to HIV or AIDS – to seek out new job opportunities or simply to fulfill a dream of living in a different place. This mobility increases the challenge of avoiding duplication in counting persons with AIDS across different jurisdictions throughout the US.

**To counter the potential problem of duplication, CDC initiated the Routine Interstate Duplicate Review (RIDR).** This annual effort compares patient records in the national database across states in order to identify potential duplicate cases. The following process is used.

1. CDC reviews the national case reports sent to CDC for duplications. Because CDC does not receive names of patients, a match of information consisting of soundex (which is a code for the last name), date of birth, and gender help to identify potential duplications.
2. CDC provides states with a listing of all cases that are potential duplicates from other states. States contact each other to compare their patient profiles along with additional information available at the state level that is not reported to CDC.
3. Based on their discussions, the states decide whether the cases represent the same person. If they do, the states determine the state of residency at the date of diagnosis. The Surveillance systems of both states are updated with the information.

## Sexually Transmitted Disease (STD) Data

*Please interpret trend data with caution.*

Chlamydia and Gonorrhea incidence are dependent upon several factors, including testing policies in clinics, and types of tests being used. A high percentage of Gonorrhea and Chlamydia cases have an 'Unknown' race. This is attributed to the fact that these conditions are primarily reported by labs, and frequently do not indicate a race.

In 2007, DHEC began name-based reporting of Chlamydia and Gonorrhea tests from private providers and DHEC clinics and, where possible, implemented a system in which positive Chlamydia and Gonorrhea tests are electronically imported from labs. The move to name-based reporting and changes in the way case morbidity is captured resulted in an increase in incidence in both diseases, with markedly large increases in Chlamydia cases.

## South Carolina Public Health Regions

