

Geographic Spread



South Carolina reported **local activity** this week.

Influenza Activity



Overall, there was no change in influenza activity this week.

Regional Influenza Activity



Increased



No change



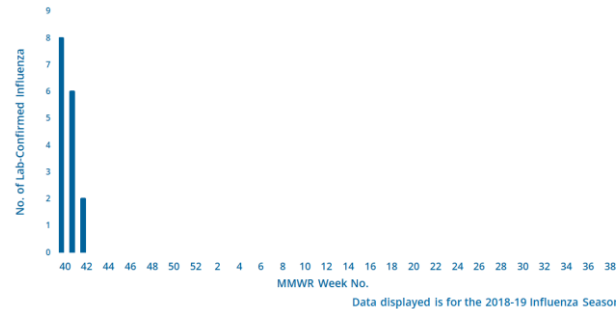
Decreased



Increased

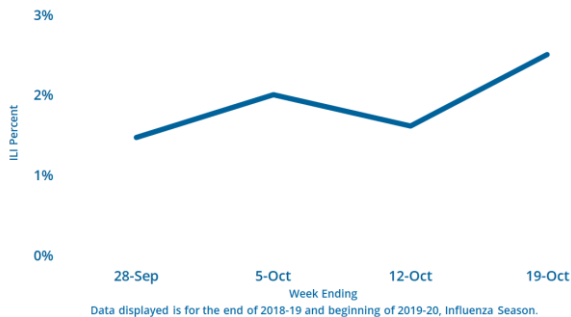
Virologic Surveillance

This week **2** lab-confirmed tests were reported. In the current flu season, there have been **16** lab-confirmed tests reported.



Influenza-Like Illness Surveillance

The percent of patient visits to sentinel providers for an influenza-like illness (ILI) was **2.5%**, which is **below** South Carolina's baseline (**3.6%**). The ILI activity level overall was **minimal**.



Influenza-Associated Hospitalizations

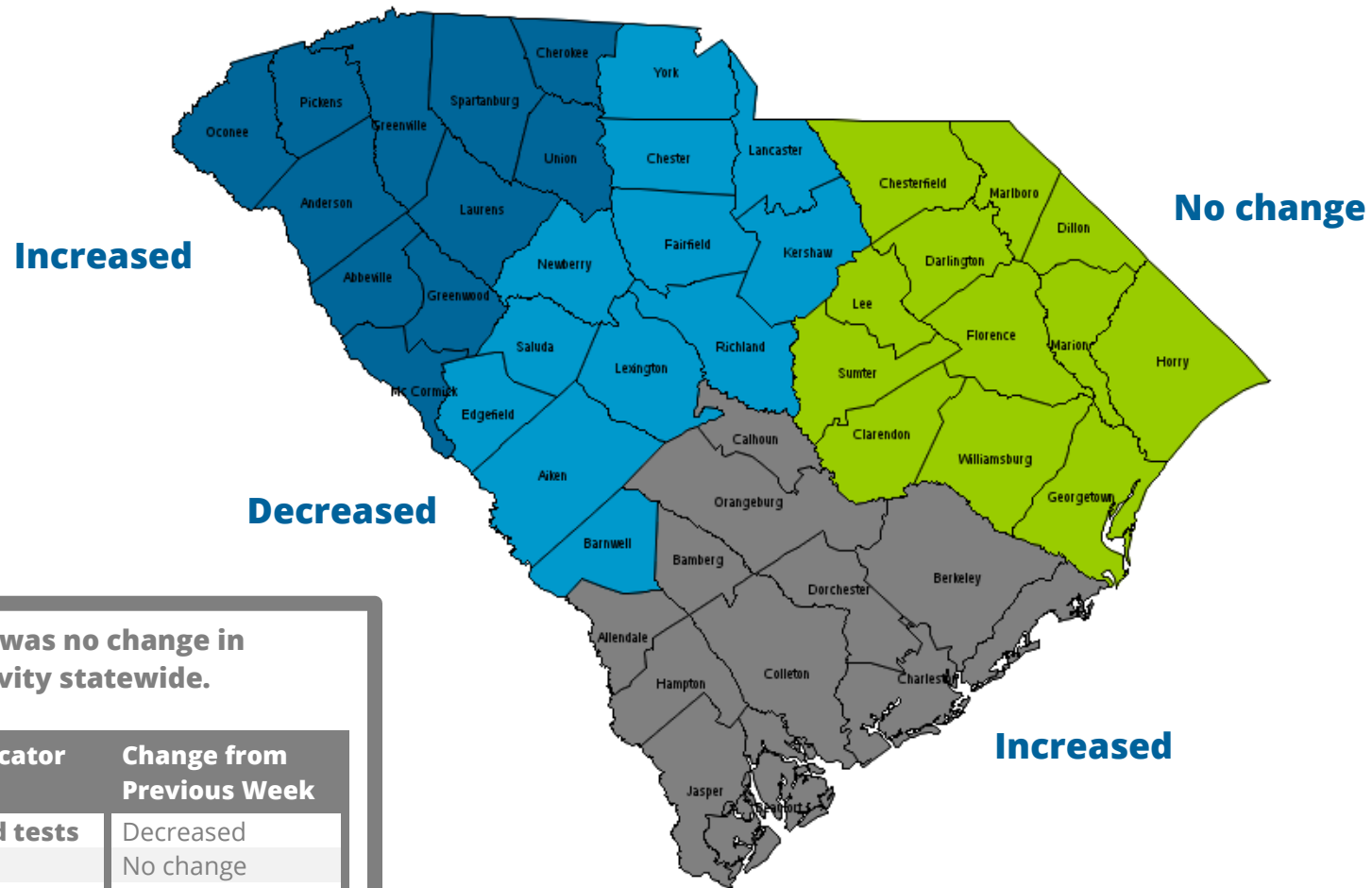
This week **14** influenza-associated hospitalizations were reported by **37** hospitals. The cumulative hospitalization rate is **0.3 per 100,000**. In the current flu season, there have been **28** influenza-associated hospitalizations.

Influenza-Associated Deaths

This week **0** influenza-associated deaths were reported. In the current flu season, there have been **0** influenza-associated deaths.

Influenza Activity*

In the 4 Public Health Regions, activity showed...



Overall there was no change in influenza activity statewide.

Influenza Indicator	Change from Previous Week
Lab-confirmed tests	Decreased
ILI Percent	No change
Hospitalizations	Increased

*Indicators for assessing influenza activity include: lab-confirmed tests, ILI percent, and hospitalizations.

Virologic Surveillance

Lab-Confirmed Influenza Cases by Influenza Type To Date**					
Influenza Type	No. of Cases (%)				5 season average
	This Week	2019-20	2018-19	2017-18	
Overall	2	16	12	4	5
Influenza A	1(50.0)	10(62.5)	7(58.3)	3(75.0)	3(79.5)
A(H3)	--	1(10.0)	--	3(100.0)	1(33.3)
A(H1N1)	1(100.0)	2(20.0)	1(14.3)	--	0(0.0)
A(NS)*	--	7(70.0)	6(85.7)	--	2(66.7)
Influenza B	1(50.0)	6(37.5)	5(41.7)	1(25.0)	2(20.5)
B (Victoria)	--	--	1(20.0)	--	0(0.0)
B(Yamagata)	--	--	--	1(100.0)	0(0.0)
B (LND)+	1(100.0)	6(100)	4(80.0)	--	2(100.0)

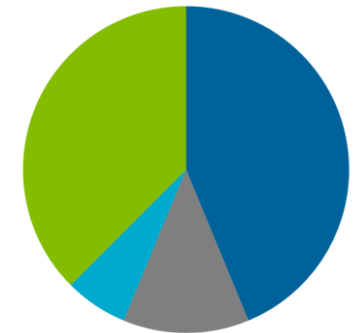
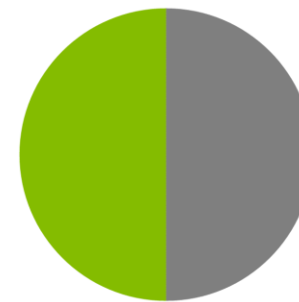
*NS - not subtyped +LND - lineage not determined

**Data presented from previous influenza seasons represents the data from that season through the same week as the current season. Nationally, the influenza season begins with MMWR week 40 and ends with MMWR week 39. The 2019-20 influenza season began on September 29, 2019 and will end on September 26, 2020.

Laboratory-Confirmed Influenza Cases, by Virus Type

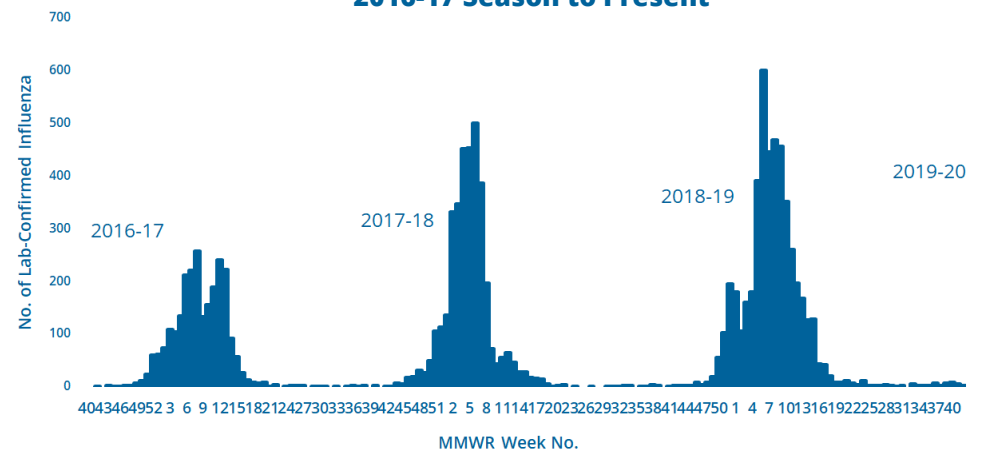
Week ending 10/19

Cumulative



■ A not subtyped ■ A(H1N1) ■ A (H3) ■ B (lineage not determined) ■ B (YAM) ■ B (VIC)

Laboratory-Confirmed Influenza Cases, 2016-17 Season to Present



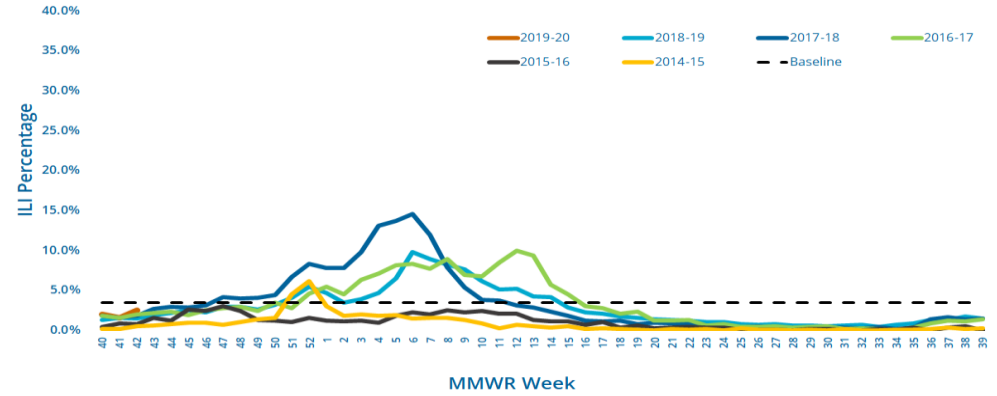
Influenza-Like Illness Surveillance

This week, the ILI activity level was **minimal** and **2.5%** of patient visits to SC ILINet providers was attributed to an influenza-like illness. This is **below** the state baseline, **3.6%**.

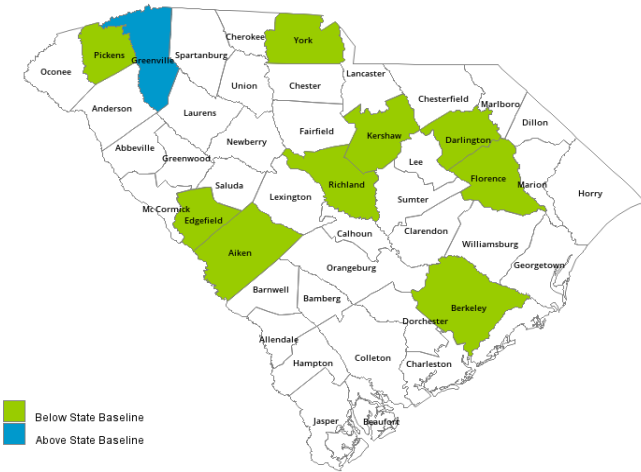
Reports were received from providers in **10** counties, representing all DHEC Public Health regions.

**ILI percentage is dependent upon the number of

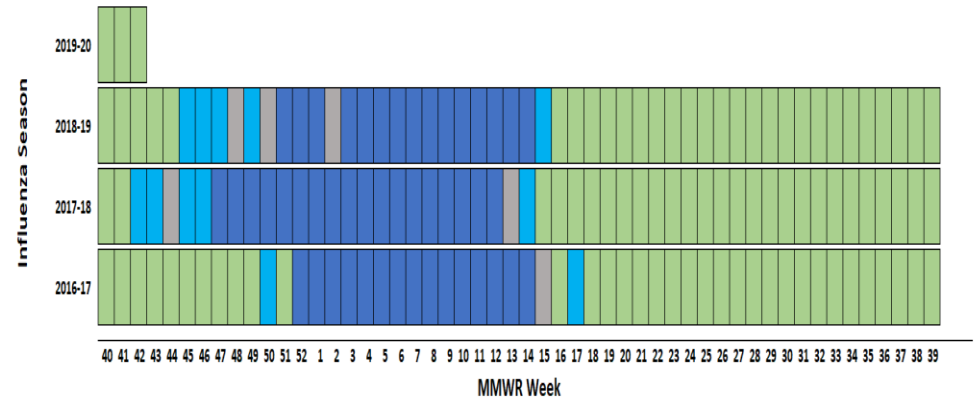
Percentage of Influenza-like Illness (ILI) Visits Reported by Sentinel Providers for Past and Current Seasons



County ILI Percent



State ILI Activity Level by MMWR Week,



ILI ACTIVITY LEVELS: **MINIMAL** **LOW** **MODERATE** **HIGH**

Influenza-Associated Hospitalizations and Deaths

Influenza-Associated Hospitalizations by Age Group*

Influenza Season	No. of Hospitalizations (Rate)					
	Overall	Ages 0-4	Ages 5-17	Ages 18-49	Ages 50-64	Ages 65+
This Week	14(0.3)	2(0.7)	--	3(0.2)	4(0.4)	5(0.6)
2019-20	28(0.6)	2(0.7)	--	4(0.2)	5(0.5)	17(2.0)
2018-19	14(0.3)	2(0.7)	2(0.2)	4(0.2)	3(0.3)	3(0.3)
2017-18	23(0.5)	1(0.3)	1(0.1)	4(0.2)	5(0.5)	12(1.4)
5 season average	27(0.5)	2(0.7)	2(0.2)	4(0.2)	7(0.7)	12(1.5)

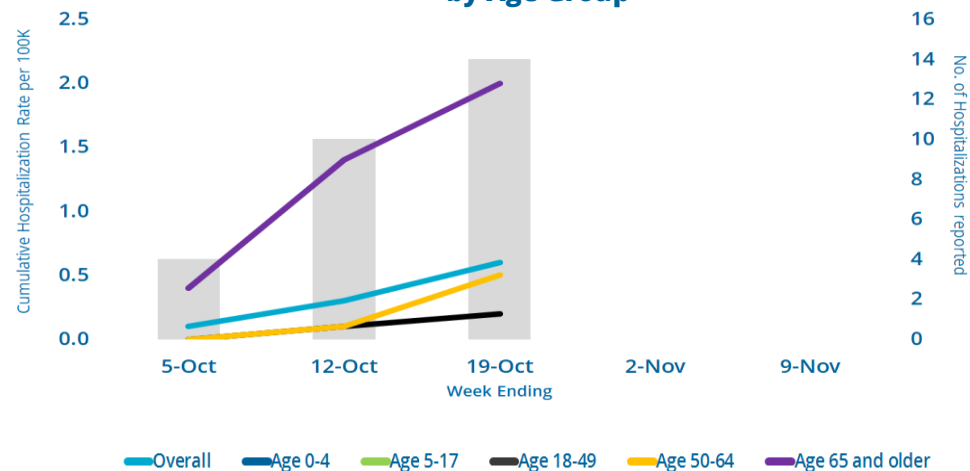
Influenza-Associated Deaths by Age Group*

Influenza Season	No. of Deaths (Rate)					
	Overall	Ages 0-4	Ages 5-17	Ages 18-49	Ages 50-64	Ages 65+
This Week	--	--	--	--	--	--
2019-20	--	--	--	--	--	--
2018-19	--	--	--	--	--	--
2017-18	1	--	--	--	--	1(0.1)
5 season average	2(0.0)	--	--	--	1(0.1)	1(0.2)

*Data presented from previous influenza seasons represent the data from that season through the same week as the current season. Nationally, the influenza season begins with MMWR week 40 and ends with MMWR week 39. The 2019-20 influenza season began on September 29, 2019 and will end on September 26, 2020.



Cumulative Hospitalization Rate by Age Group



Reported Influenza-Associated Hospitalization, 2016-17 Season to Present

