

## Geographic Spread



South Carolina reported **sporadic activity** this week.

## Influenza Indicators

Influenza Indicator	Change from Previous Week
Lab-confirmed tests	Increased
ILI Percent	No change
Hospitalizations	No change

## Regional Influenza Activity



Increased



Increased



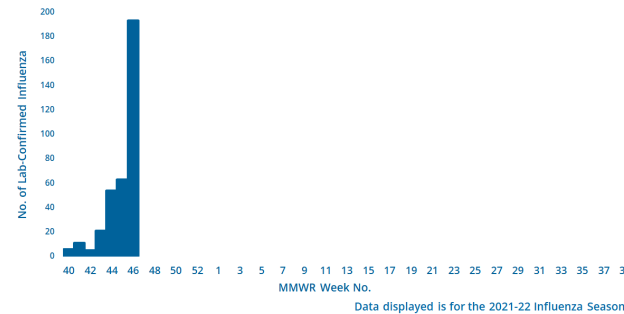
No change



No change

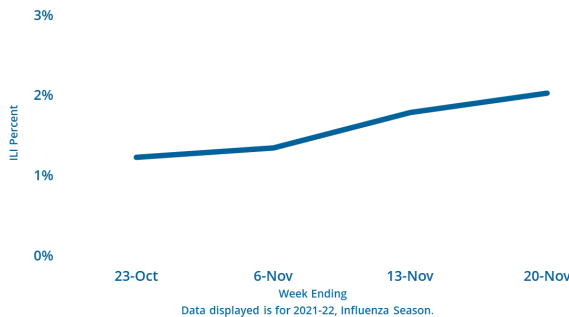
## Virologic Surveillance

This week **193** lab-confirmed tests were reported. In the current flu season, there have been **353** lab-confirmed tests reported.



## Influenza-Like Illness Surveillance

The percent of patient visits to sentinel providers for an influenza-like illness (ILI) was **2.0%**, which is **below** South Carolina's baseline (**3.6%**). The ILI activity level overall was **minimal**.



## Influenza-Associated Hospitalizations

This week **5** influenza-associated hospitalizations were reported by **42** hospitals. The cumulative hospitalization rate is **0.4 per 100,000**. In the current flu season, there have been **26** influenza-associated hospitalizations.

## Influenza-Associated Deaths

This week **0** influenza-associated deaths were reported. The cumulative mortality rate is **0.0 per 100,000**. In the current flu season, there has been **1** influenza-associated death.

# Virologic Surveillance

Lab-Confirmed Influenza Cases by Influenza Type to Date\*

Influenza Type	No. of Cases (%)				
	This Week	2021-22	2020-21	2019-20	5 season average
Overall	193	353	34	80	38
<b>Influenza A</b>	<b>191(99.0)</b>	<b>312(88.4)</b>	<b>5(14.7)</b>	<b>40(50.0)</b>	<b>21(55.3)</b>
A(H3)	9(4.7)	41(13.1)	--	6(15.0)	6(28.6)
A(H1N1)	6(3.1)	9(2.9)	1(20.0)	6(15.0)	3(14.3)
A(NS)**	176(92.1)	262(84.0)	4(80.0)	28(70.0)	12(57.1)
<b>Influenza B</b>	<b>2(1.0)</b>	<b>40(11.3)</b>	<b>28(82.4)</b>	<b>39(48.8)</b>	<b>16(42.1)</b>
B (Victoria)	--	--	--	3(7.7)	1(6.3)
B(Yamagata)	--	--	--	--	--
B (LND)+	2(100.0)	40(100.0)	28(100.0)	36(92.3)	15(93.8)
<b>Influenza Virus Coinfection<sup>§</sup></b>	<b>0(0.0)</b>	<b>1(0.3)</b>	<b>1(2.9)</b>	<b>1(1.3)</b>	<b>1(2.6)</b>
<b>Influenza/SARS-CoV-2 Coinfection<sup>¶</sup></b>	<b>0(0.0)</b>	<b>0(0.0)</b>	<b>0(0.0)</b>	<b>0(0.0)</b>	<b>N/A</b>

\*Data presented from previous influenza seasons represents the data from that season through the same week as the current season. Nationally, the influenza season begins with MMWR week 40 and ends with MMWR week 39. The 2021-22 influenza season began on October 3, 2021 and will end on October 1, 2022.

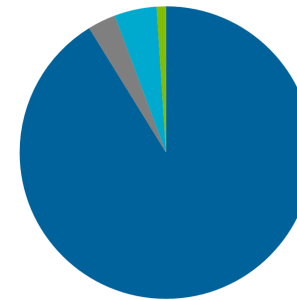
\*\*NS - not subtyped +LND - lineage not determined

§Cases with more than one influenza A subtype in the same sample or with influenza A and B viral types in the same sample simultaneously.

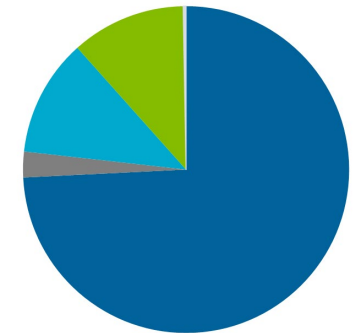
¶Lab-confirmed influenza cases who also tested positive for SARS-CoV-2 virus from specimens collected on the same date.

Laboratory-Confirmed Influenza Cases, by Virus Type

Week ending 11/20

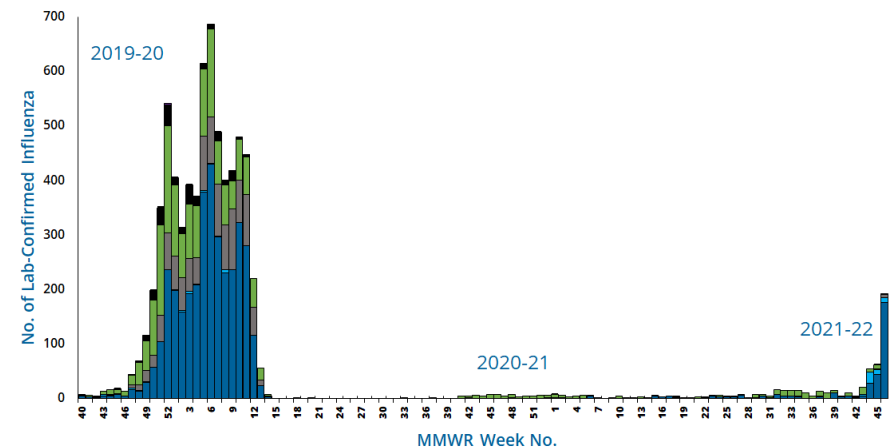


Cumulative



■ A not subtyped ■ A(H1N1) ■ A(H3) ■ B (lineage not determined) ■ B (YAM) ■ B (VIC) ■ Co-infection

Laboratory-Confirmed Influenza Cases, 2019-20 Season to Present



■ A not subtyped ■ A(H1N1) ■ A(H3) ■ B (lineage not determined) ■ B (YAM) ■ B (VIC) ■ Co-infection

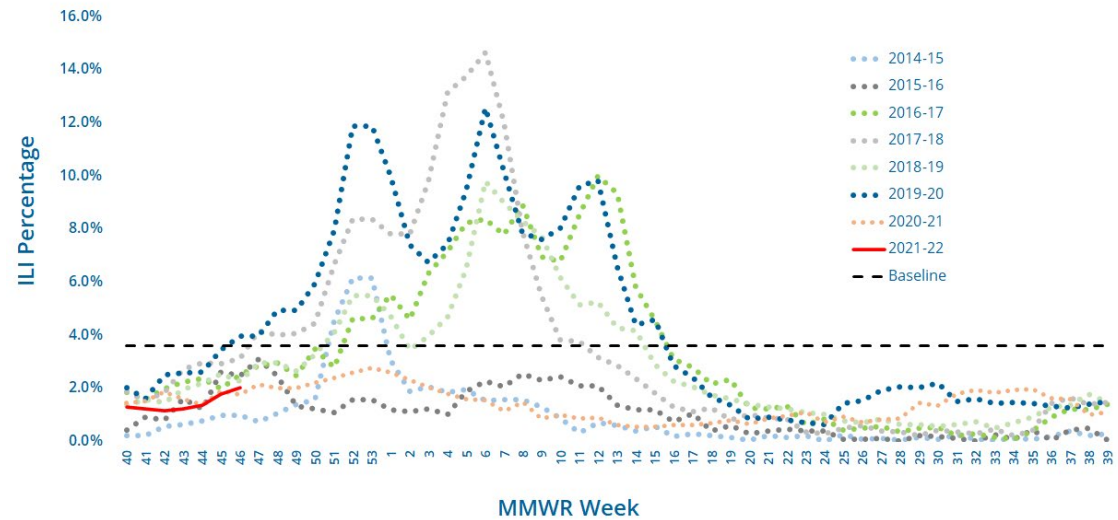
# Influenza-Like Illness (ILI) Surveillance

This week, the ILI activity level was **minimal** and **2.0%** of patient visits to SC ILINet providers were attributed to an influenza-like illness. This is **below** the state baseline of **3.6%**.

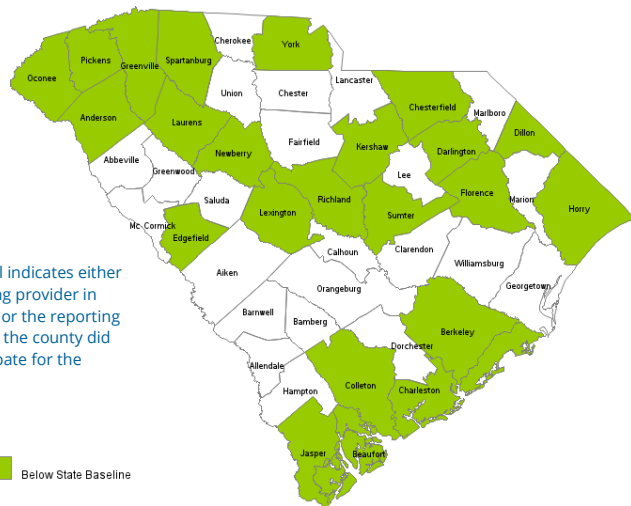
Reports were received from providers in **23** counties, representing all DHEC Public Health regions.

\*\*ILI percentage is dependent upon the number of reporting providers and/or can vary by disease activity or the number of providers submitting reports.\*\*

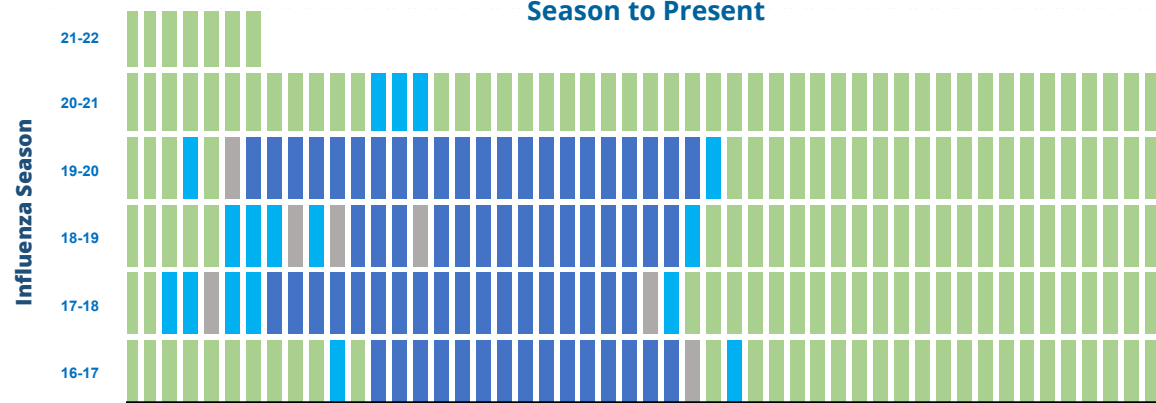
Percentage of Influenza-like Illness (ILI) Visits Reported by Sentinel Providers for Past and Current Seasons



County ILI Percent



State ILI Activity Level by MMWR Week, 2016-17 Influenza Season to Present



ILI ACTIVITY LEVELS: **MINIMAL** **LOW** MODERATE HIGH

# Influenza-Associated Hospitalizations And Deaths

## Influenza-Associated Hospitalizations by Age Group\*

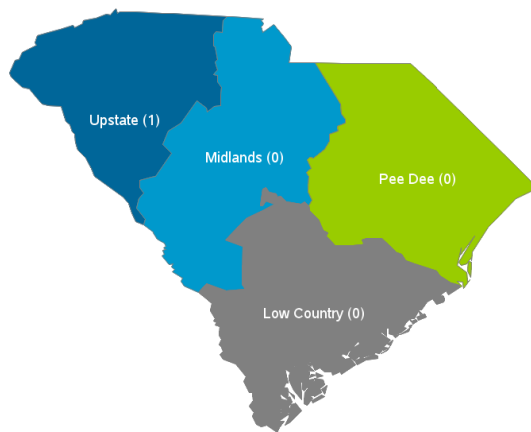
Influenza Season	No. of Hospitalizations (Rate)					
	Overall	Ages 0-4	Ages 5-17	Ages 18-49	Ages 50-64	Ages 65+
This Week	5(0.1)	--	--	3(0.1)	1(0.1)	1(0.1)
2021-22	26(0.5)	2(0.6)	1(0.1)	8(0.4)	5(0.5)	10(1.1)
2020-21	32(0.6)	2(0.7)	--	11(0.5)	8(0.8)	11(1.3)
2019-20	97(2.0)	12(4.1)	1(0.1)	19(0.9)	22(2.2)	43(5.2)
5 season average	65(1.3)	4(1.5)	2(0.2)	13(0.6)	15(1.6)	31(3.9)

## Influenza-Associated Deaths by Age Group\*

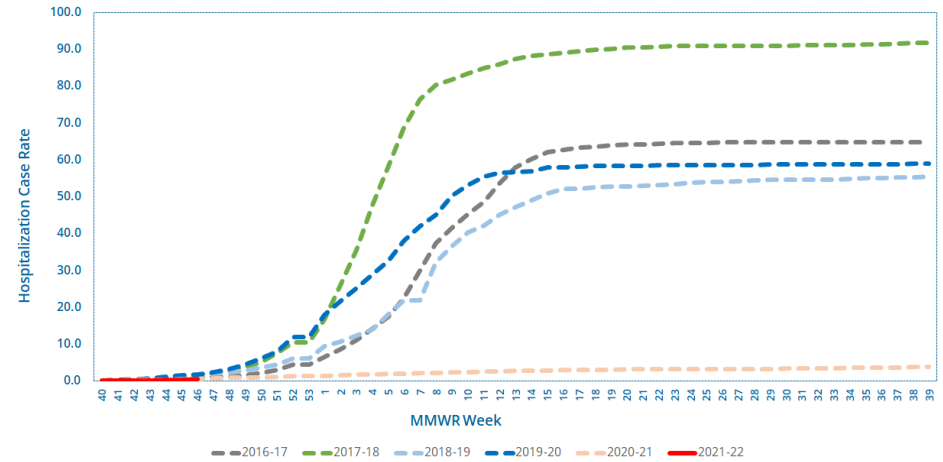
Influenza Season	No. of Deaths (Rate)					
	Overall	Ages 0-4	Ages 5-17	Ages 18-49	Ages 50-64	Ages 65+
This Week	0(0.0)	--	--	--	--	--
2021-22	1(0.0)	--	--	--	--	1(0.1)
2020-21	2(0.0)	--	--	1(0.1)	1(0.1)	--
2019-20	3(0.1)	--	--	--	--	3(0.3)
5 season average	1(0.0)	--	--	--	--	1(0.1)

\*Data presented from previous influenza seasons represents the data from that season through the same week as the current season. Nationally, the influenza season begins with MMWR week 40 and ends with MMWR week 39. The 2021-22 influenza season began on October 3, 2021 and will end on October 1, 2022.

## Influenza-Associated Deaths by Region



## Cumulative Hospitalization Rate for Past and Current Seasons



## Reported Influenza-Associated Hospitalizations, 2019-20 Season to present

