

Geographic Spread



Due to the ongoing COVID-19 pandemic, assessment of geographic spread will be suspended for the 2020-21 influenza season. Please visit the CDC website for more information: <https://www.cdc.gov/flu/weekly/index.htm>

Influenza Activity



Overall, there was no change in influenza activity this week.

Regional Influenza Activity



No change



No change



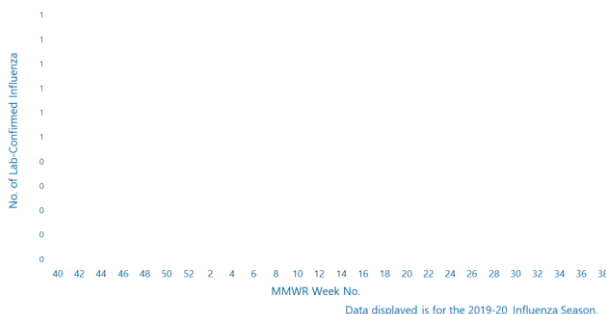
No change



No change

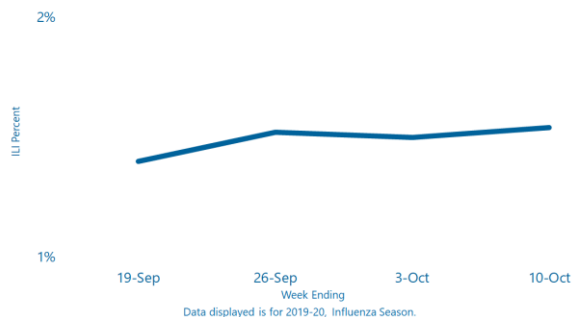
Virologic Surveillance

This week **0** lab-confirmed test was reported. In the current flu season, there has been **0** lab-confirmed test reported.



Influenza-Like Illness Surveillance

The percent of patient visits to sentinel providers for an influenza-like illness (ILI) was **1.5%**, which is below South Carolina's baseline (**3.6%**). The ILI activity level overall was minimal.



Influenza-Associated Hospitalizations

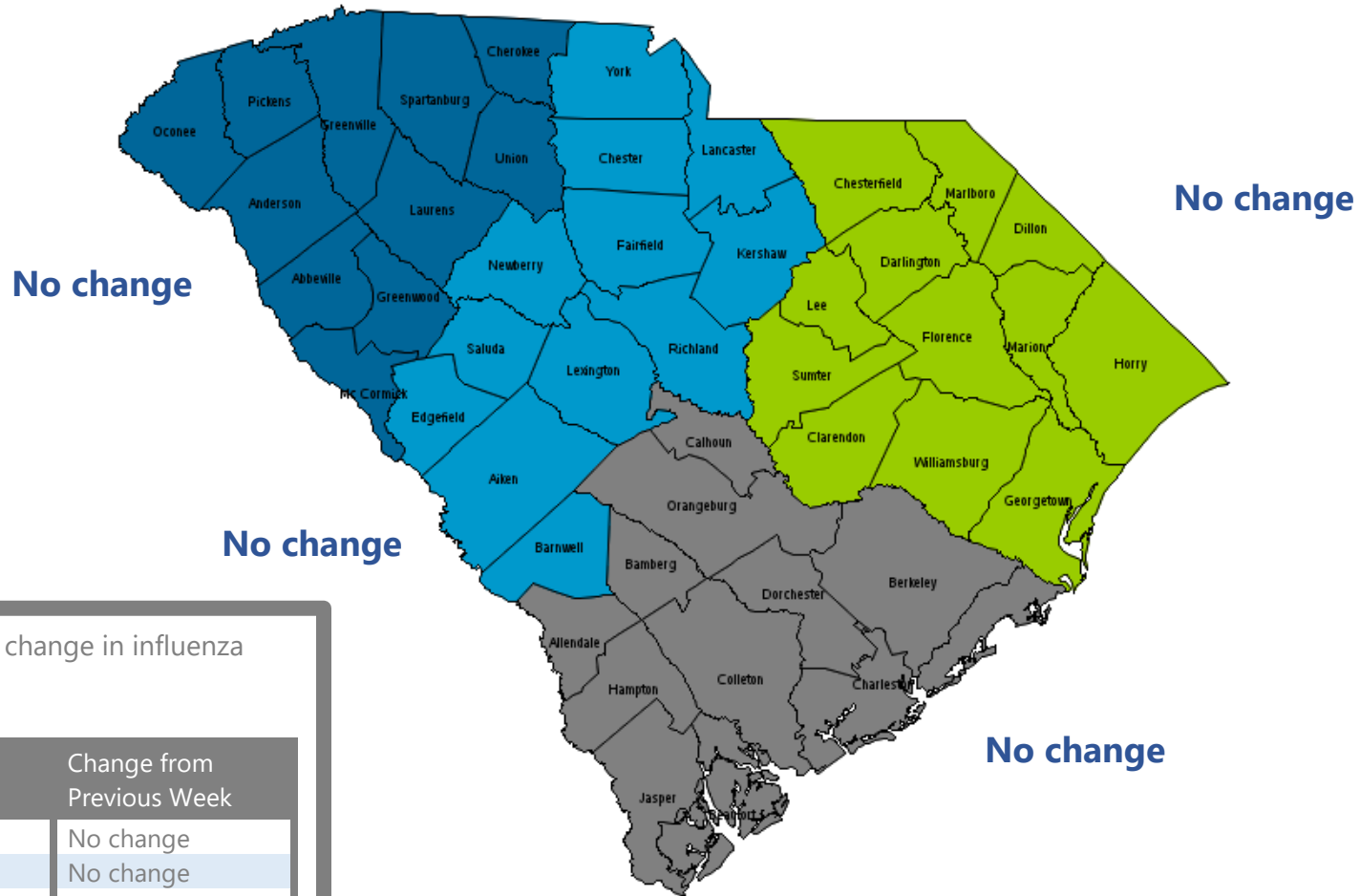
This week **7** influenza-associated hospitalizations were reported by 38 hospitals. The cumulative hospitalization rate is 0.2 per 100,000. In the current flu season, there have been **10** influenza-associated hospitalizations.

Influenza-Associated Deaths

This week **0** influenza-associated death was reported. The cumulative mortality rate is 0.0 per 100,000. In the current flu season, there has been **0** influenza-associated death.

Influenza Activity*

Changes in influenza activity will be assessed next week.



Overall there was no change in influenza activity statewide.

Influenza Indicator	Change from Previous Week
Lab-confirmed tests	No change
ILI Percent	No change
Hospitalizations	Increased

*Indicators for assessing influenza activity include: lab-confirmed tests, ILI percent, and hospitalizations.

Virologic Surveillance

Lab-Confirmed Influenza Cases by Influenza Type to Date*					
Influenza Type	No. of Cases (%)				
	This Week	2020-21	2019-20	2018-19	5 season average
Overall	0	0	14	9	5
Influenza A	0(0.0)	0(0.0)	9(64.3)	6(66.7)	4(57.1)
A(H3)	--	--	1(11.1)	--	1(25.0)
A(H1N1)	--	--	1(11.1)	2(33.3)	1(25.0)
A(NS)**	--	--	7(77.8)	4(66.7)	2(50.0)
Influenza B	0(0.0)	0(0.0)	5(35.7)	3(33.3)	2(28.6)
B (Victoria)	--	--	--	1(33.3)	--
B(Yamagata)	--	--	--	--	--
B (LND) ⁺	--	--	5(100.0)	2(66.7)	2(100.0)
Influenza Virus Co-infection [§]	0(0.0)	0(0.0)	0(0.0)	0(0.0)	N/A
Influenza/ SARS-CoV-2 Co-infection [£]	0(0.0)	0(0.0)	0(0.0)	N/A	N/A

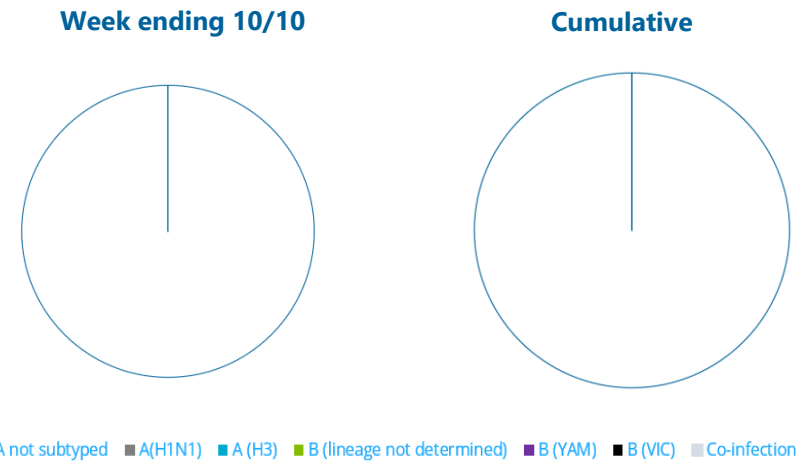
*Data presented from previous influenza seasons represents the data from that season through the same week as the current season. Nationally, the influenza season begins with MMWR week 40 and ends with MMWR week 39. The 2020-21 influenza season began on September 27, 2020 and will end on October 3, 2021.

**NS – not subtyped +LND – lineage not determined

[§]Cases with more than one influenza A subtype in the same sample or influenzas A and B in the same sample simultaneously.

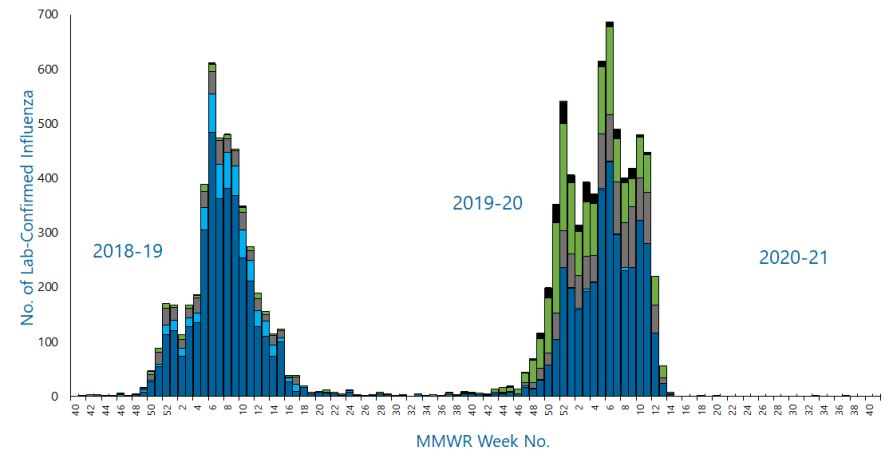
[£]Cases who tested positive for influenza and SARS-CoV-2 viruses in the same sample.

Laboratory-Confirmed Influenza Cases, by Virus Type



■ A not subtyped ■ A(H1N1) ■ A(H3) ■ B (lineage not determined) ■ B (YAM) ■ B (VIC) ■ Co-infection

Laboratory-Confirmed Influenza Cases, 2018-19 Season to Present



■ A not subtyped ■ A(H1N1) ■ A(H3) ■ B (lineage not determined) ■ B (YAM) ■ B (VIC) ■ Co-infection

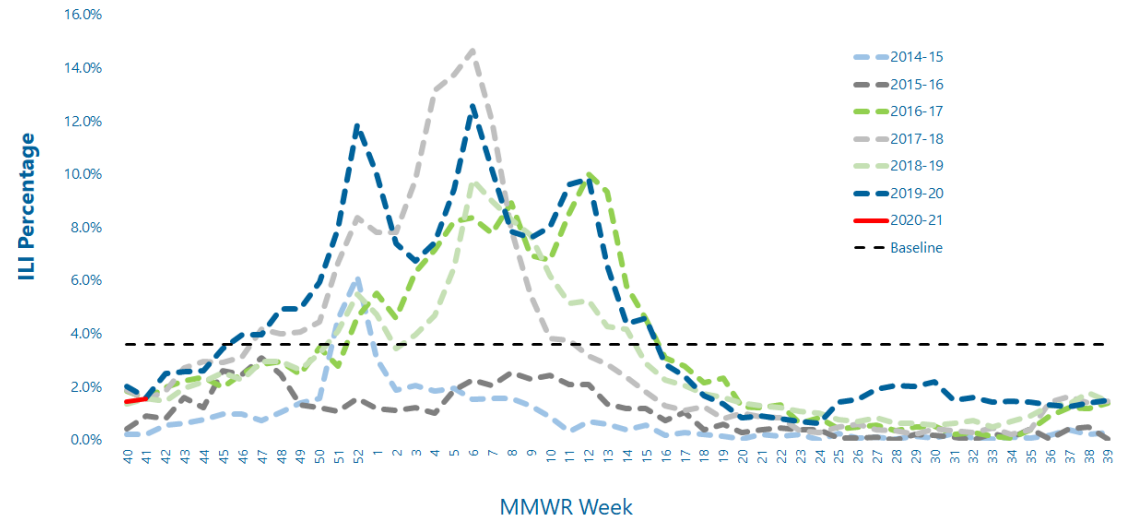
Influenza-Like Illness (ILI) Surveillance

This week, the ILI activity level was **minimal** and 1.5% of patient visits to SC ILINet providers were attributed to an influenza-like illness. This is below the state baseline of 3.6%.

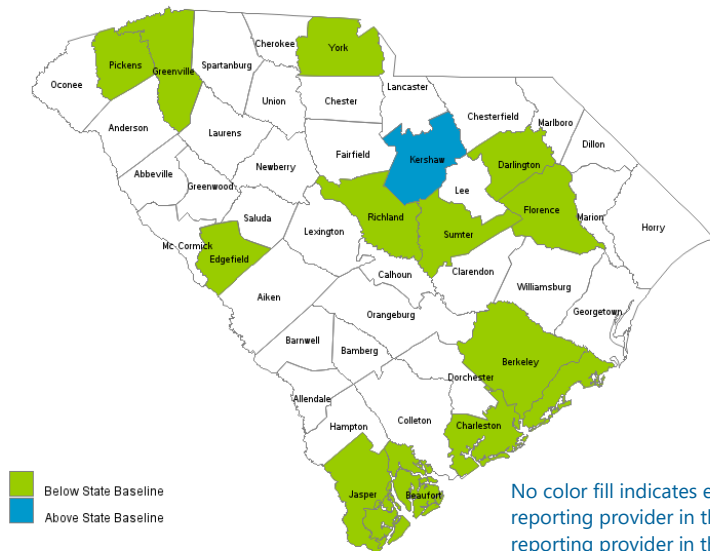
Reports were received from providers in 13 counties, representing all DHEC Public Health regions.

ILI percentage is dependent upon the number of reporting providers and/or can vary by disease activity.

Percentage of Influenza-like Illness (ILI) Visits Reported by Sentinel Providers for Past and Current Seasons

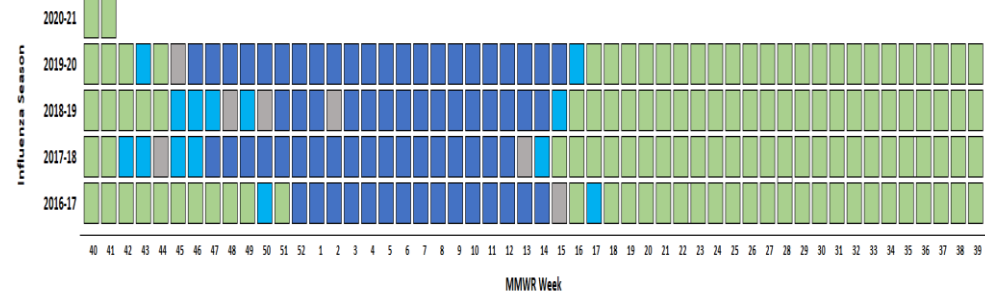


County ILI Percent



No color fill indicates either no reporting provider in the county or the reporting provider in the county did not participate for the week.

State ILI Activity Level by MMWR Week, 2016-17 Influenza Season to Present



ILI ACTIVITY LEVELS: **MINIMAL** **LOW** **MODERATE** **HIGH**

Influenza-Associated Hospitalizations And Deaths

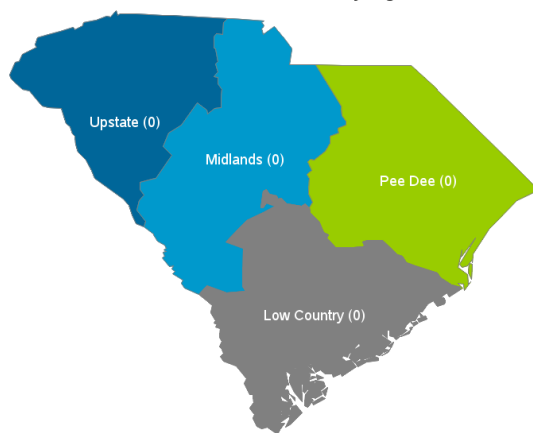
Influenza-Associated Hospitalizations by Age Group*

Influenza Season	No. of Hospitalizations (Rate)					
	Overall	Ages 0-4	Ages 5-17	Ages 18-49	Ages 50-64	Ages 65+
This Week	7(0.1)	1(0.3)	--	1(0.1)	1(0.1)	4(0.5)
2020-21	10(0.2)	1(0.3)	--	2(0.1)	2(0.2)	5(0.6)
2019-20	14(0.3)	--	--	1(0.0)	1(0.1)	12(1.4)
2018-19	7(0.1)	--	2(0.2)	3(0.1)	--	2(0.2)
5 season average	18(0.3)	1(0.3)	1(0.1)	3(0.1)	3(0.3)	10(1.2)

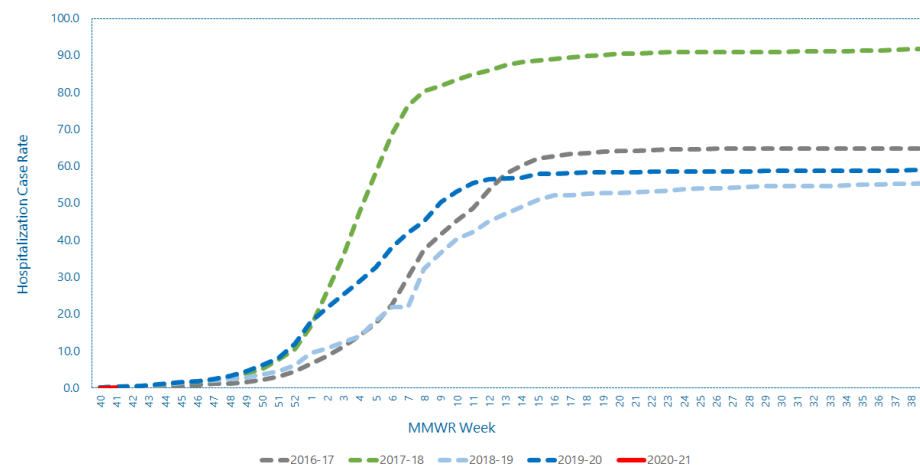
Influenza-Associated Deaths by Age Group*

Influenza Season	No. of Deaths (Rate)					
	Overall	Ages 0-4	Ages 5-17	Ages 18-49	Ages 50-64	Ages 65+
This Week	0(0.0)	--	--	--	--	--
2020-21	0(0.0)	--	--	--	--	--
2019-20	0(0.0)	--	--	--	--	--
2018-19	0(0.0)	--	--	--	--	--
5 season average	1(0.0)	--	--	--	--	1(0.1)

Influenza-Associated Deaths by Region



Cumulative Hospitalization Rate



Reported Influenza-Associated Hospitalizations, 2018-19 Season to present

