

Geographic Spread



South Carolina reported **widespread activity** this week. This is the **eighth consecutive week** at widespread activity.

Data (e.g. reported cases and hospitalizations) from the 2014-15 season are included in this report.



Influenza-Associated Hospitalizations and Deaths

A total of **518** influenza-associated hospitalizations were reported by 49 hospitals. The cumulative hospitalization rate is **58.3** per 100,000. There were **22** laboratory-confirmed influenza-associated deaths reported; however, **6** deaths occurred in previous weeks. The cumulative mortality rate is **2.1** per 100,000. Compared to the previous week, the number of reported hospitalizations **decreased** by **94 (15.4%)** and number of reported deaths **decreased** by **17 (51.5%)**. In the current flu season, there have been **2,894** influenza-associated hospitalizations and **106** influenza-associated deaths reported.



Virologic Surveillance

A total of **18,726** influenza cases (**18,370** positive rapid antigen detection tests; **356** lab-confirmed tests) were reported from 46 counties representing all four DHEC Public Health regions. Influenza A was most frequently reported by clinical labs and Influenza A(H3) was most frequently reported by the public health lab. Compared to the previous week, this is a **decrease** of **1,504** cases (**7.4%**). In the current flu season, there have been **81,071** influenza cases (**79,170** positive rapid antigen detection tests; **1,901** lab-confirmed tests) reported.

For a description of South Carolina's influenza surveillance components and definitions go to:

<http://www.scdhec.gov/Health/DiseasesandConditions/InfectiousDiseases/Flu/FluData/>



Influenza-Like Illness Surveillance

The percent of patient visits to sentinel providers for an influenza-like illness (ILI) was **15.99%**, which is **above** South Carolina's baseline (**3.13%**). Compared to the previous week, this is an **increase** of **0.87%**.

The ILI activity level was **high**.



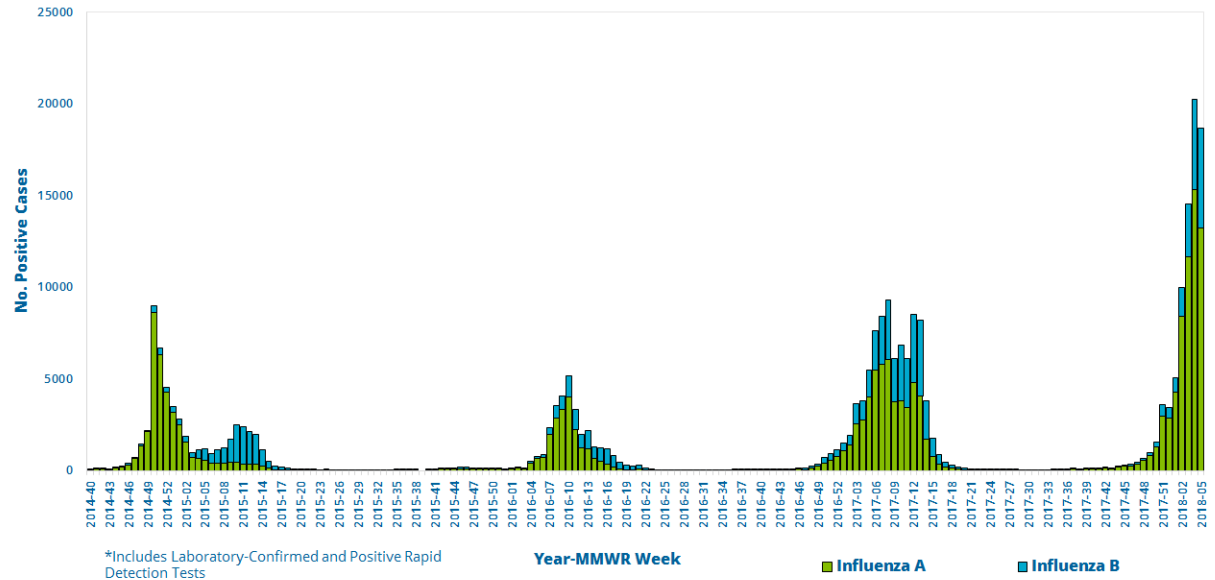
Virologic Surveillance

This week, **356** lab-confirmed cases and **18,370** positive rapid influenza detection tests were reported by public health and clinical labs.

The percentage of specimens sent to the state public health lab that tested positive for influenza was **81.1%**.

Influenza A was most frequently reported by clinical labs and **influenza A (H3)** was most frequently reported by the public health lab.

Influenza Cases* Reported by Clinical and Public Health Labs, 2014-15 Season to Present



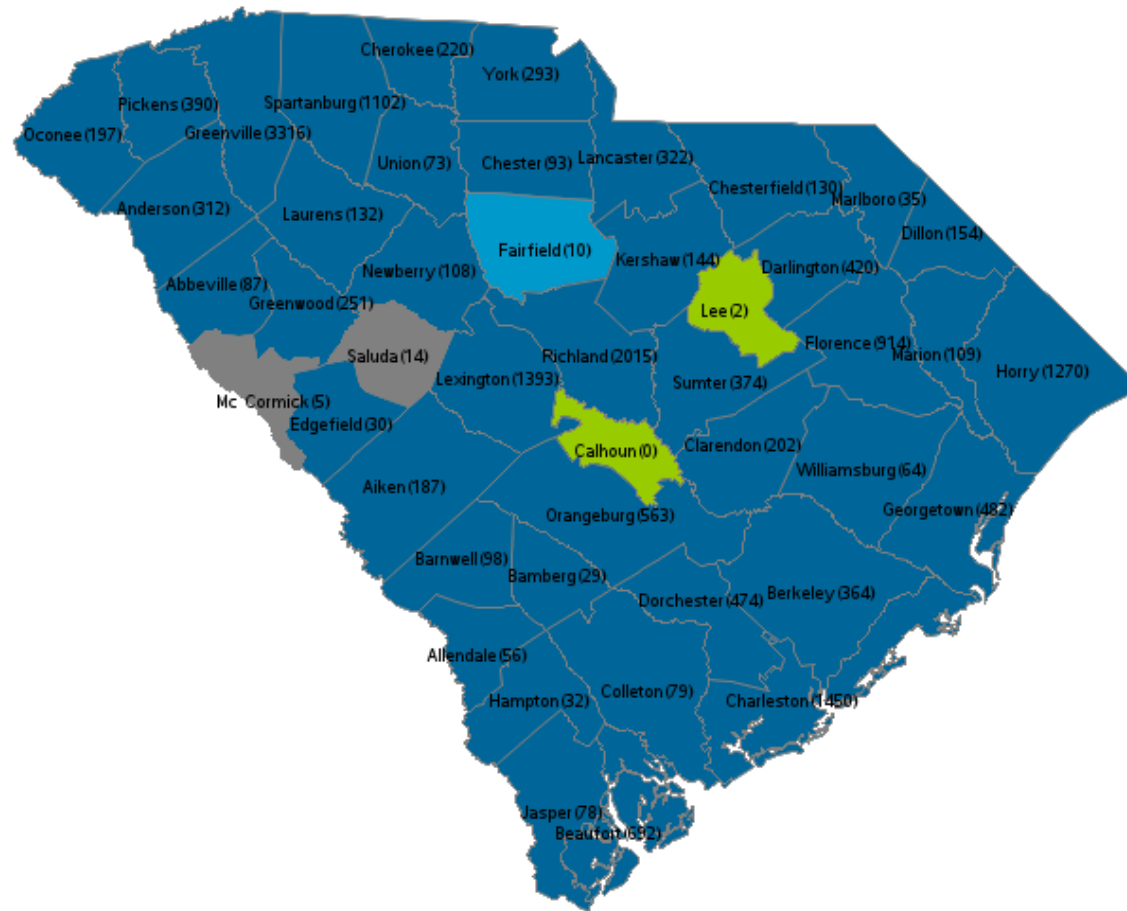
Influenza Cases Reported by Public Health and Clinical Labs, This Week and Season Total

| Influenza Type | Public Health Lab | | Clinical Labs | | Total | |
|------------------------------|-------------------|--------------------|----------------------|----------------------|----------------------|----------------------|
| | This Week | Season Total | This Week | Season Total | This Week | Season Total |
| Overall | 5 | 134 | 18,721 | 80,937 | 18,726 | 81,071 |
| Influenza A | 5 (100%) | 109 (81.3%) | 13243 (70.7%) | 62758 (77.5%) | 13248 (70.7%) | 62867 (77.5%) |
| A (H3) | 4 (80.0%) | 86 (78.9%) | 57 (0.5%) | 264 (0.4%) | 59 (0.5%) | 350 (0.6%) |
| A (H1N1) | 1 (20.0%) | 23 (21.1%) | 19 (0.1%) | 71 (0.1%) | 20 (0.1%) | 94 (0.1%) |
| A (not subtyped) | -- | -- | 13167 (99.4%) | 62423 (99.5%) | 13167 (99.4%) | 62423 (99.3%) |
| Influenza B | 0 | 25 (18.7%) | 5458 (29.2%) | 17813 (22.0%) | 5458 (29.2%) | 17838 (22.0%) |
| B (Victoria) | -- | -- | -- | -- | -- | -- |
| B (Yamagata) | -- | 22 (88.0%) | -- | -- | -- | 22 (0.1%) |
| B (lineage not performed) | -- | 3 (12.0%) | 5458 (100%) | 17813 (100%) | 5458 (100%) | 17816 (99.9%) |
| Influenza (not typed) | -- | -- | 20 (0.1%) | 366 (0.5%) | 20 (0.1%) | 366 (0.5%) |



Virologic Surveillance

Map of Influenza Cases (n)*
and Influenza Case Rate/100,000 By County
For Week Ending 2/3/2018



Weekly Influenza Case Rate per 100K

- 0 to 25 persons
- 26 to 50 persons
- 51 to 75 persons
- Greater than 75 persons

*Includes all lab-confirmed and positive rapid cases



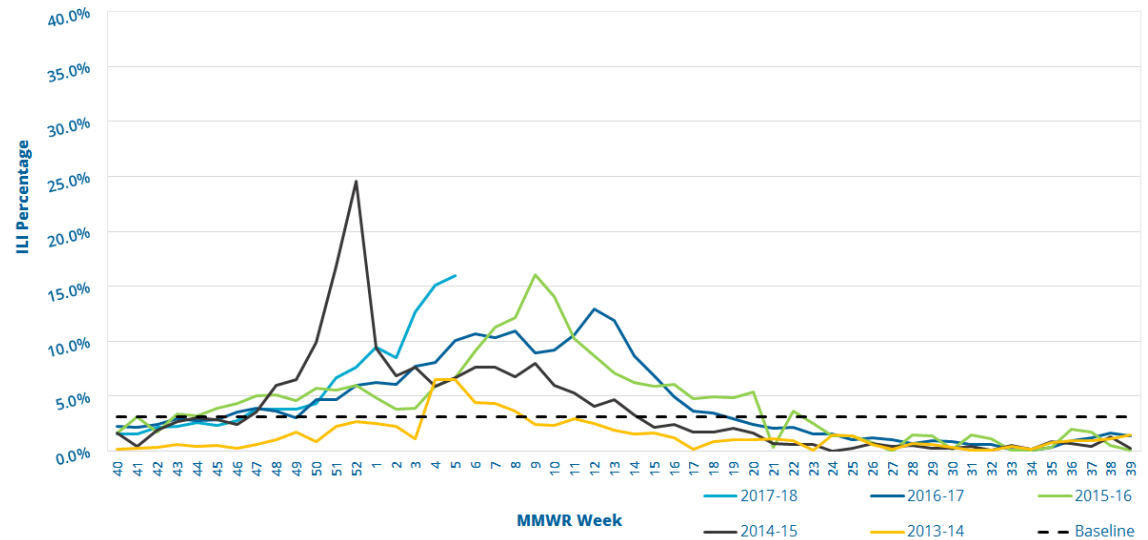
Influenza-Like Illness Surveillance

This week, the ILI activity level was **high** and **15.99%** of patient visits to SC ILINet providers was attributed to an influenza-like illness. This is **above** the state baseline, **3.13%**.

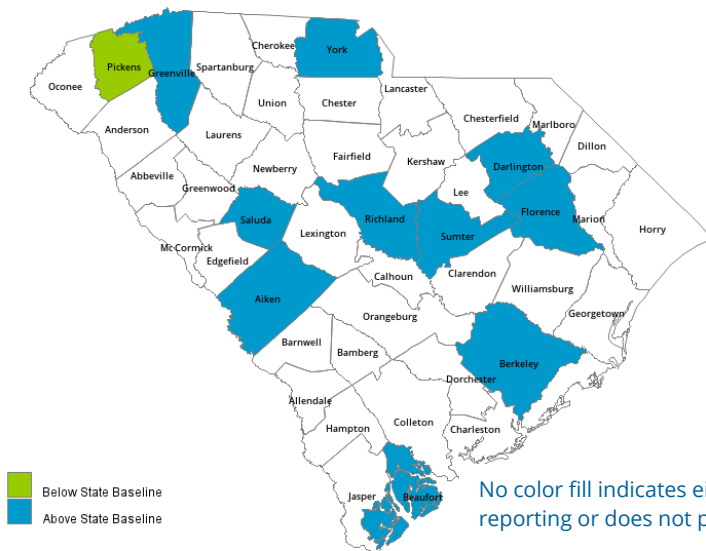
Reports were received from providers in 11 counties, representing all 4 DHEC Public Health regions.

ILI percentage is dependent upon the number of reporting providers and/or can vary by disease activity or the number of providers submitting reports.

Percentage of Influenza-Like Illness (ILI) Visits Reported by Sentinel Providers for Past and Current Seasons



County ILI Percent



State ILI Activity Level 2017-18 Calendar by Week of the Year

| OCT | NOV | DEC | JAN | FEB | MAR | APR | MAY | JUN | JUL | AUG | SEP |
|-----|-----|-----|-----|-----|-----|-----|-----|-----|-----|-----|-----|
| 40 | 44 | 48 | 1 | 5 | 9 | 14 | 18 | 22 | 27 | 31 | 35 |
| 41 | 45 | 49 | 2 | 6 | 10 | 15 | 19 | 23 | 28 | 32 | 36 |
| 42 | 46 | 50 | 3 | 7 | 11 | 16 | 20 | 24 | 29 | 33 | 37 |
| 43 | 47 | 51 | 4 | 8 | 12 | 17 | 21 | 25 | 30 | 34 | 38 |
| | | 52 | | | 13 | | | 26 | | | 39 |

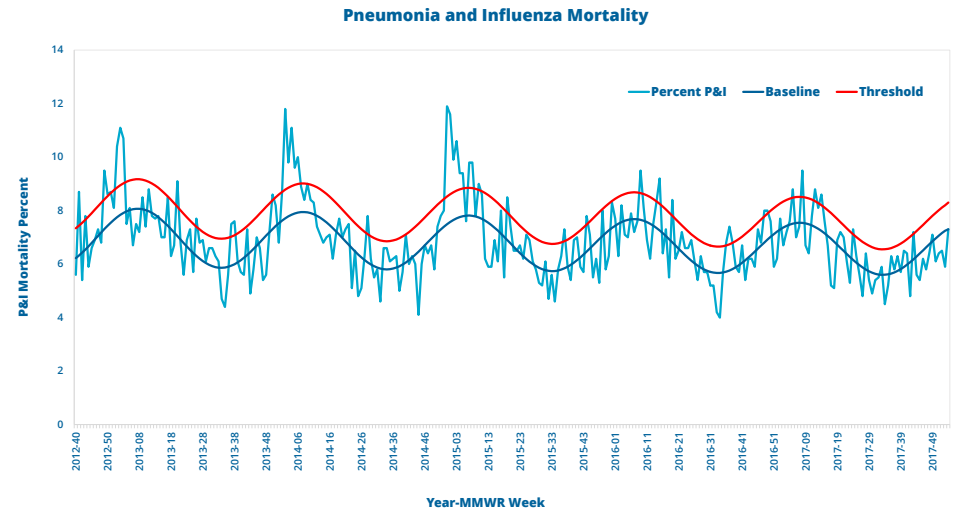
ILI ACTIVITY LEVELS: MINIMAL LOW MODERATE HIGH



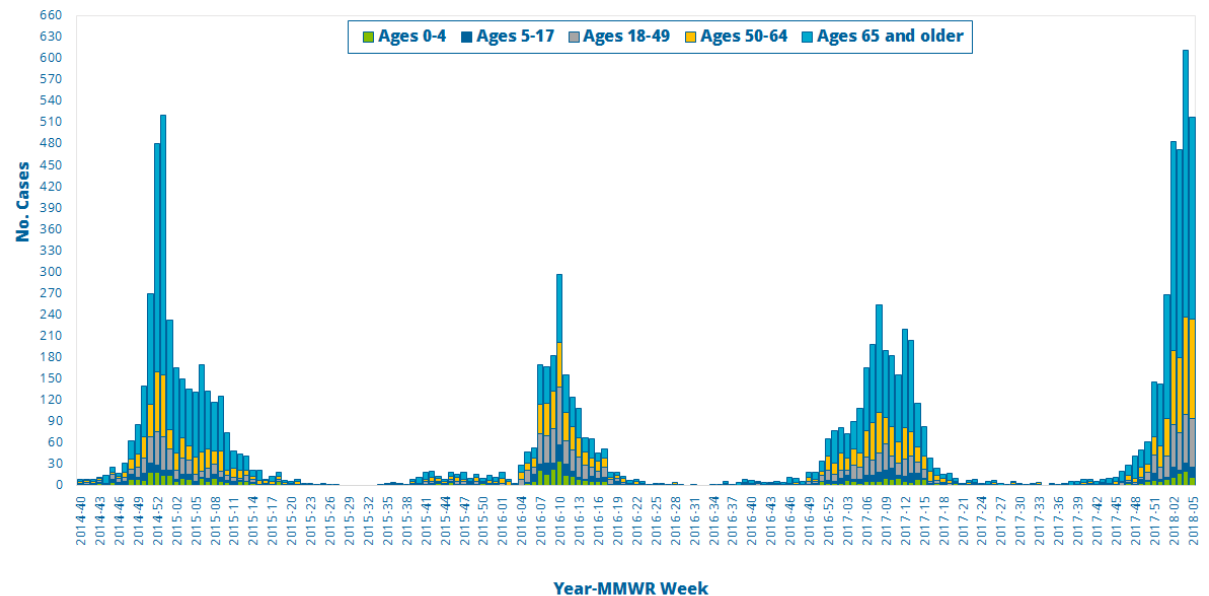
Influenza-Associated Hospitalizations And Deaths

| Age Group | Hospitalizations | | | Deaths | | |
|------------|------------------|------------------|--------------|-----------|------------------|--------------|
| | This Week | Rate per 100,000 | Season Total | This Week | Rate per 100,000 | Season Total |
| 0 to 4 | 12 | 32.4 | 95 | -- | -- | -- |
| 5 to 17 | 13 | 8.8 | 71 | -- | -- | -- |
| 18 to 49 | 69 | 17.7 | 355 | 4 | 0.6 | 12 |
| 50 to 64 | 140 | 70.8 | 645 | 1 | 1.9 | 17 |
| 65 & older | 284 | 273.5 | 1728 | 11 | 12.2 | 77 |
| Total | 518 | 58.3 | 2894 | 16 | 2.1 | 106 |

The percentage of deaths attributed to pneumonia and influenza was 7.3%. This is **below** the epidemic threshold for the week ending January 13, 2018.



Reported Influenza-Associated Hospitalizations by Age Group, 2014-15 Season to Present



Influenza-Associated Deaths by Region

