

Geographic Spread



South Carolina reported **local activity** this week. This is the **third** consecutive week at local activity.



Influenza-Associated Hospitalizations and Deaths

A total of **5** influenza-associated hospitalizations were reported by 45 hospitals. The cumulative hospitalization rate is **0.5** per 100,000. There were **0** laboratory-confirmed influenza-associated deaths reported. The cumulative mortality rate is **0** per 100,000. Compared to the previous week, the number of reported hospitalizations **decreased** by 4 (44.4%). In the current flu season, there have been **23** influenza-associated hospitalizations and **0** influenza-associated deaths reported.



Virologic Surveillance

A total of **143** influenza cases (142 positive rapid antigen detection tests; 1 lab-confirmed test) were reported from 21 counties representing all four DHEC Public Health regions. Influenza A was most frequently reported by clinical and public health labs. Compared to the previous week, this is an **increase** of 11 cases (8.4%). In the current flu season, there have been **379** influenza cases (375 positive rapid antigen detection tests; 4 lab-confirmed tests) reported.



Influenza-Like Illness Surveillance

The percent of patient visits to sentinel providers for an influenza-like illness (ILI) was **2.37%**, which is **below** South Carolina's baseline (**3.13%**). Compared to the previous week, this is an **increase** of **0.72%**.

The ILI activity level was **low**.



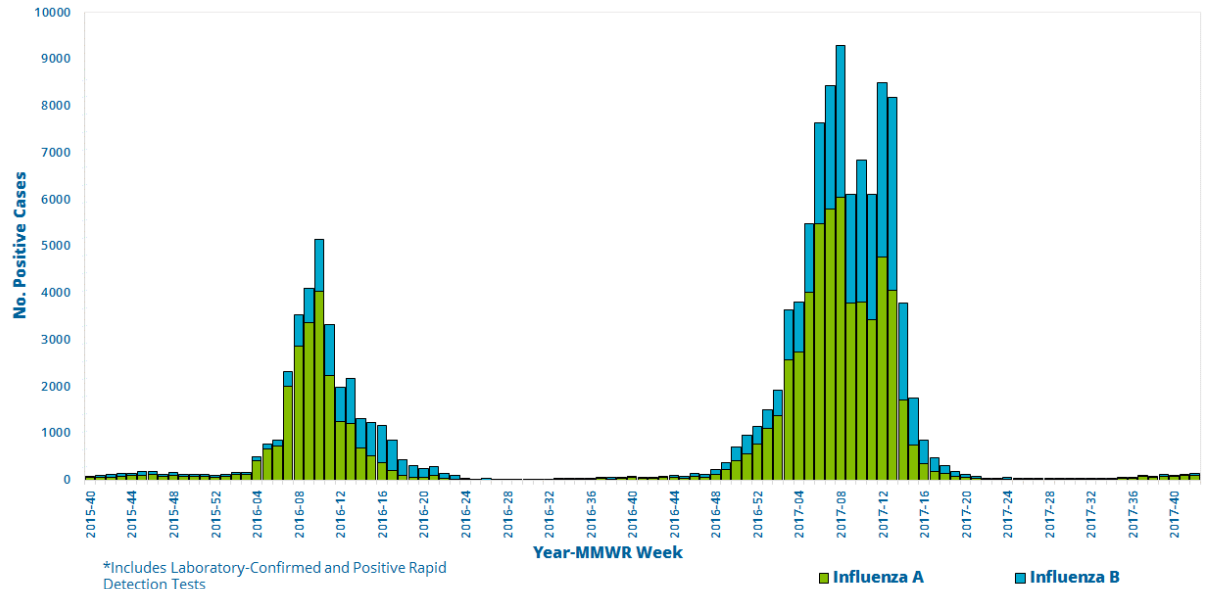
Virologic Surveillance

This week, **1** lab-confirmed case and **142** positive rapid influenza detection tests were reported by public health and clinical labs.

The percentage of specimens sent to the state public health lab that tested positive for influenza was **50%**.

Influenza A and **Influenza A (H3)** were most frequently reported by clinical labs and the state public health lab, respectively.

Influenza Cases* Reported by Clinical and Public Health Labs, 2015-16 Season to Present



Influenza Cases Reported by Public Health and Clinical Labs, This Week and Season Total

Influenza Type	Public Health Lab		Clinical Labs		Total	
	This Week	Season Total	This Week	Season Total	This Week	Season Total
Overall	1	2	142	377	143	379
Influenza A	1	1 (50%)	109 (76.8%)	290 (77.0%)	110 (76.9%)	291 (76.8%)
A (H3)	1 (100%)	1 (100%)	--	2 (0.7%)	1(0.9%)	3 (1.0%)
A (H1N1)	--	--	--	--	--	--
A (not subtyped)	--	--	109 (100%)	288 (99.3%)	109 (99.1%)	288 (99.0%)
Influenza B	0	1 (50%)	31 (21.8%)	79 (20.9%)	31 (21.7%)	80 (21.1%)
B (Victoria)	--	--	--	--	--	--
B (Yamagata)	--	1 (100%)	--	--	--	1 (1.3%)
B (lineage not performed)	--	--	31 (100%)	79 (100%)	31 (100%)	79 (98.7%)
Influenza (not typed)	--	--	2 (1.4%)	8 (2.1%)	2 (1.4%)	8 (2.1%)



Virologic Surveillance

Weekly Influenza Case Rate/100,000 By County



Weekly Influenza Case Rate per 100K

- 0 to 25 persons
- 26 to 50 persons
- 51 to 75 persons
- Greater than 75 persons

Includes all lab-confirmed and positive rapid cases

Flu Watch MMWR Week 42 October 15 - October 21, 2017



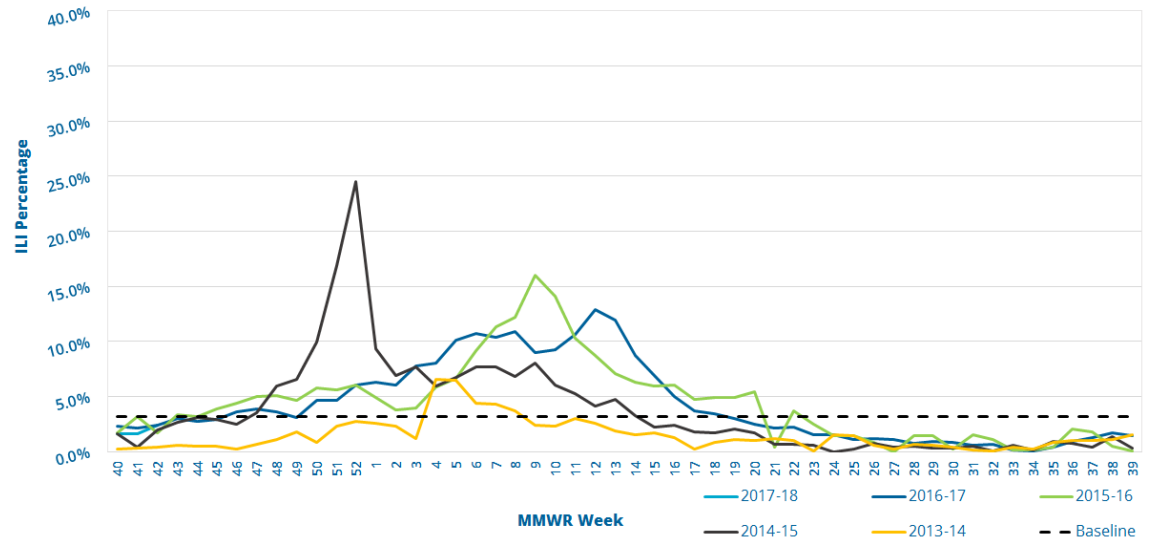
Influenza-Like Illness Surveillance

This week, the ILI activity level was **low** and **2.37%** of patient visits to SC ILINet providers was attributed to an influenza-like illness. This is **below** the state baseline, **3.13%**.

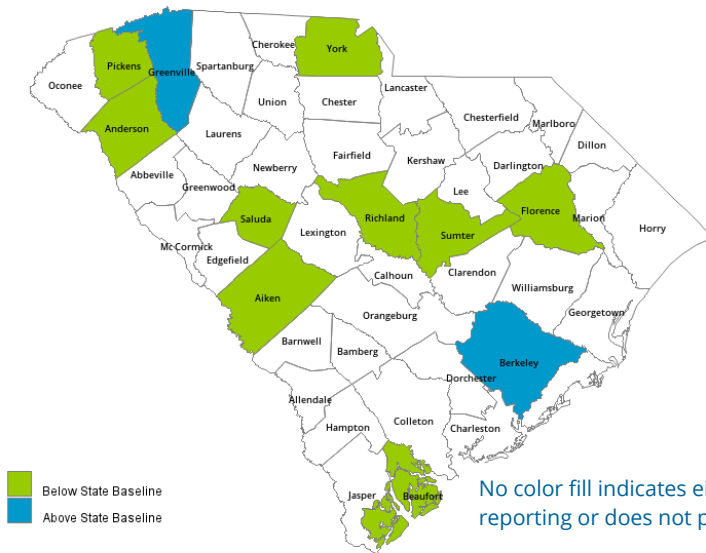
Reports were received from providers in 11 counties, representing all 4 DHEC Public Health regions.

**ILI percentage is dependent upon the number of reporting providers and/or can vary by disease activity or the number of providers submitting reports.

Percentage of Influenza-Like Illness (ILI) Visits Reported by Sentinel Providers for Past and Current Seasons



County ILI Percent



State ILI Activity Level 2017-18 Calendar by Week of the Year

OCT	NOV	DEC	JAN	FEB	MAR	APR	MAY	JUN	JUL	AUG	SEP
40	44	48	1	5	9	14	18	22	27	31	35
41	45	49	2	6	10	15	19	23	28	32	36
42	46	50	3	7	11	16	20	24	29	33	37
43	47	51	4	8	12	17	21	25	30	34	38
		52			13			26			39

ILI ACTIVITY LEVELS: MINIMAL LOW MODERATE HIGH

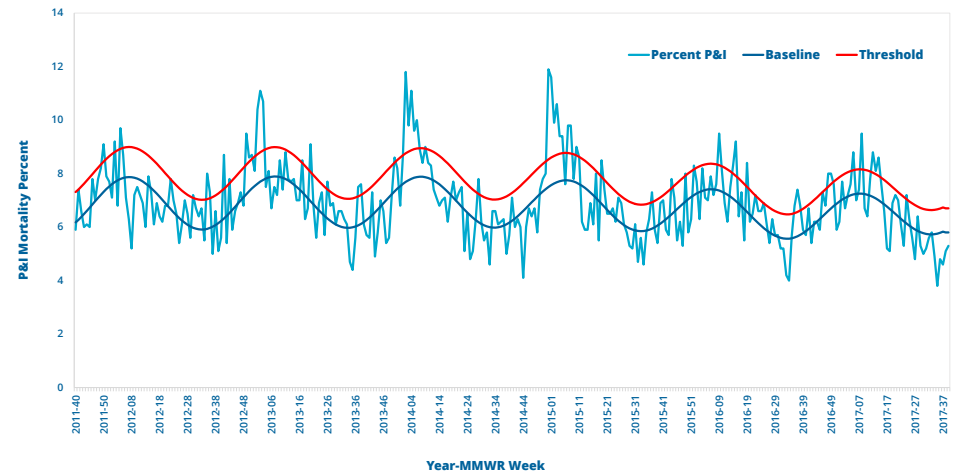


Influenza-Associated Hospitalizations And Deaths

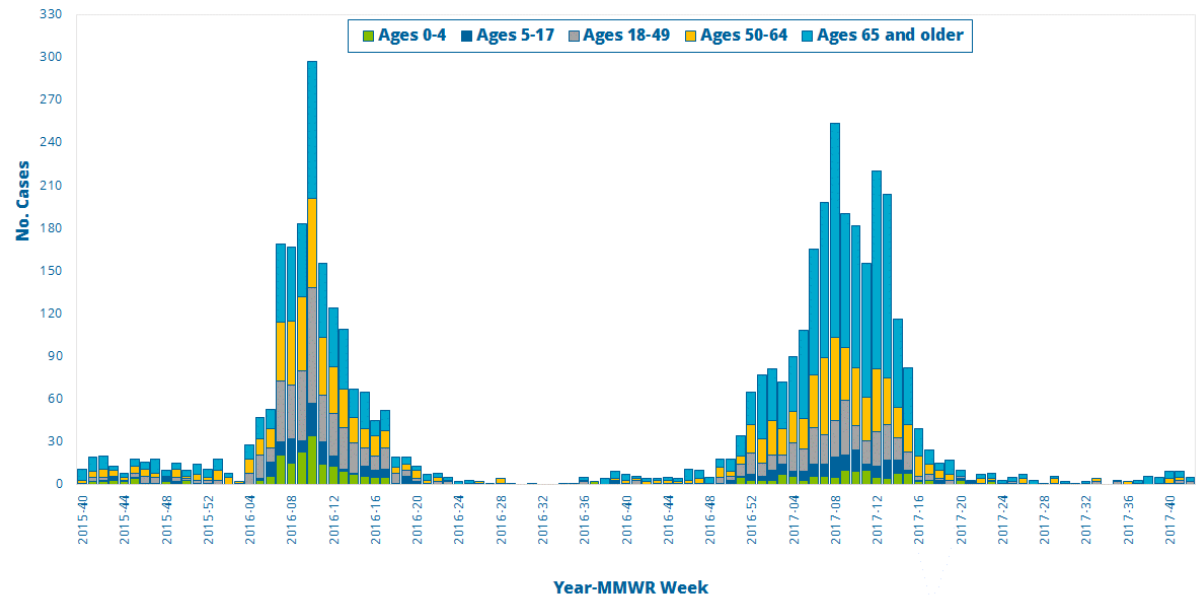
Age Group	Hospitalizations			Deaths		
	This Week	Rate per 100,000	Season Total	This Week	Rate per 100,000	Season Total
0 to 4	0	0.3	1	0	0.0	0
5 to 17	0	0.1	1	0	0.0	0
18 to 49	2	0.2	4	0	0.0	0
50 to 64	0	0.6	5	0	0.0	0
65 & older	3	1.9	12	0	0.0	0
Total	5	0.5	23	0	0.0	0

The percentage of deaths attributed to pneumonia and influenza was 5.3%. This is **below** the epidemic threshold for the week ending September 30, 2017.

Pneumonia and Influenza Mortality



Reported Influenza-Associated Hospitalizations by Age Group, 2015-16 Season to Present



Influenza-Associated Deaths by Region

