

Geographic Spread



South Carolina reported **no activity** this week.



Influenza-Associated Hospitalizations and Deaths

This week **1** influenza-associated hospitalization was reported by 21 hospitals. The cumulative hospitalization rate is **90.8** per 100,000. There was **1** laboratory-confirmed influenza-associated death reported which occurred in a previous week. The cumulative mortality rate is **5.7** per 100,000. Compared to the previous week, the number of reported hospitalizations decreased by **1** case (**50.0%**) and deaths **remained the same**. In the current flu season, there have been **4,507** influenza-associated hospitalizations and **285** influenza-associated deaths reported.



Virologic Surveillance

A total of **12** influenza cases (**12** positive rapid antigen detection tests; **0** lab-confirmed tests) were reported from 7 counties representing all four DHEC Public Health regions. Influenza B was most frequently reported by clinical labs. Compared to the previous week, this is a **decrease** of **18** cases (**60.0%**). In the current flu season, there have been **135,385** influenza cases (**131,815** positive rapid antigen detection tests; **3,570** lab-confirmed tests) reported.



Influenza-Like Illness Surveillance

The percent of patient visits to sentinel providers for an influenza-like illness (ILI) was **0.50%**, which is **below** South Carolina's baseline (**3.13%**). Compared to the previous week, this is an **increase** of **0.20%**.

The ILI activity level was **minimal**.

For a description of South Carolina's influenza surveillance components and definitions go to:

<http://www.scdhec.gov/Health/DiseasesandConditions/InfectiousDiseases/Flu/FluData/>

For national surveillance, please visit:

<https://www.cdc.gov/flu/weekly/>

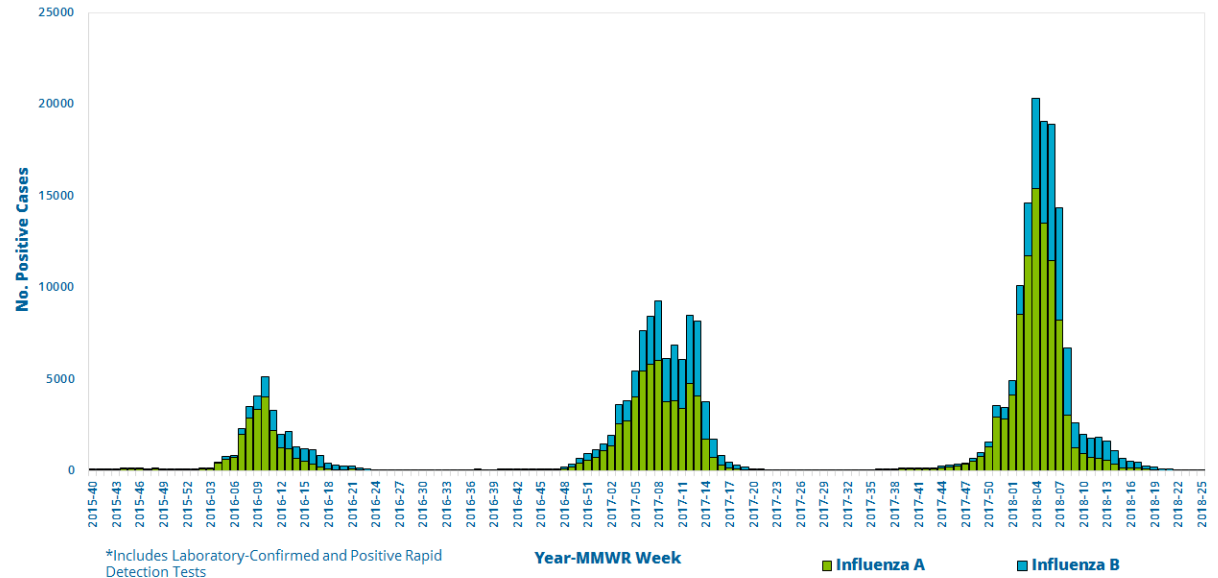


Virologic Surveillance

This week, **0** lab-confirmed case and **12** positive rapid influenza detection tests were reported by clinical labs.

Influenza B was most frequently reported by clinical labs.

Influenza Cases* Reported by Clinical and Public Health Labs, 2015-16 Season to Present



Influenza Cases Reported by Public Health and Clinical Labs, This Week and Season Total

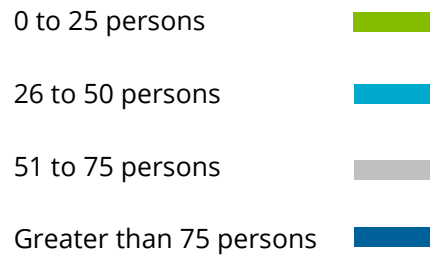
| Influenza Type | Public Health Lab | | Clinical Labs | | Total | |
|------------------------------|-------------------|--------------------|------------------|----------------------|------------------|----------------------|
| | This Week | Season Total | This Week | Season Total | This Week | Season Total |
| Overall | 0 | 233 | 12 | 135152 | 12 | 135385 |
| Influenza A | 0 | 173 (74.2%) | 4 (33.3%) | 91160 (67.4%) | 4 (33.3%) | 91333 (67.4%) |
| A (H3) | -- | 131 (75.7%) | -- | 392 (0.4%) | -- | 523 (0.6%) |
| A (H1N1) | -- | 42 (24.3%) | -- | 170 (0.2%) | -- | 212 (0.2%) |
| A (not subtyped) | -- | -- | 4 (100%) | 90598 (99.4%) | 4 (100%) | 90598 (99.2%) |
| Influenza B | 0 | 60 (25.8%) | 8 (66.7%) | 43473 (32.2%) | 8 (66.7%) | 43533 (32.2%) |
| B (Victoria) | -- | 2 (3.4%) | -- | -- | -- | 2 (0.0%) |
| B (Yamagata) | -- | 53 (88.3%) | -- | -- | -- | 53 (0.1%) |
| B (lineage not performed) | -- | 5 (8.3%) | 8 (100%) | 43473 (100%) | 8 (100%) | 43478 (99.9%) |
| Influenza (not typed) | -- | -- | -- | 519 (0.4%) | -- | 519 (0.4%) |



Virologic Surveillance

Map of Influenza Cases (n)*
and Influenza Case Rate/100,000 By County
For Week Ending 6/25/2018

Weekly Influenza Case Rate per 100K



*Includes all lab-confirmed and positive rapid cases



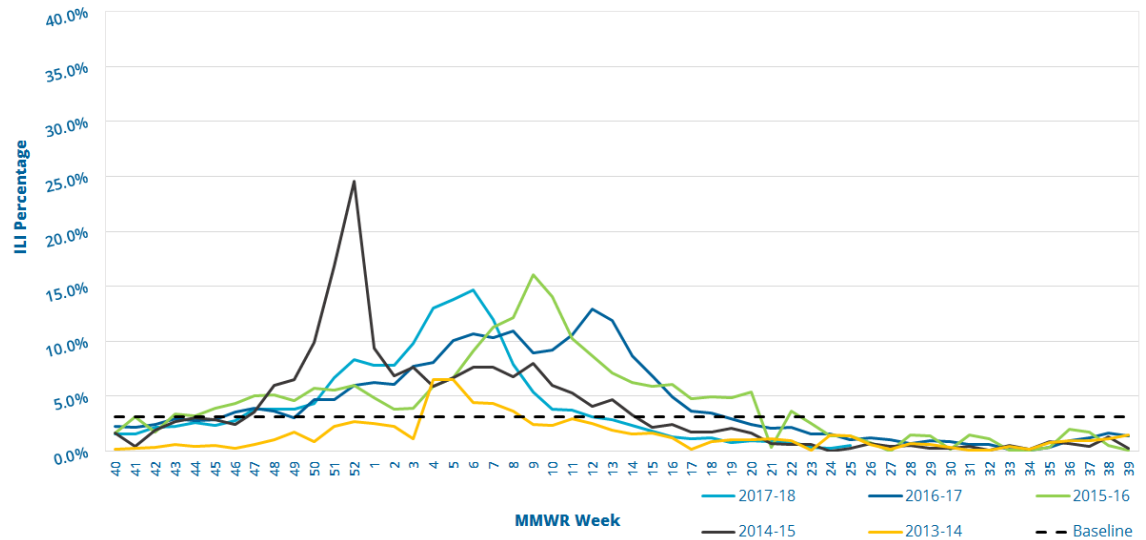
Influenza-Like Illness Surveillance

This week, the ILI activity level was **minimal** and **0.50%** of patient visits to SC ILINet providers was attributed to an influenza-like illness. This is **below** the state baseline, **3.13%**.

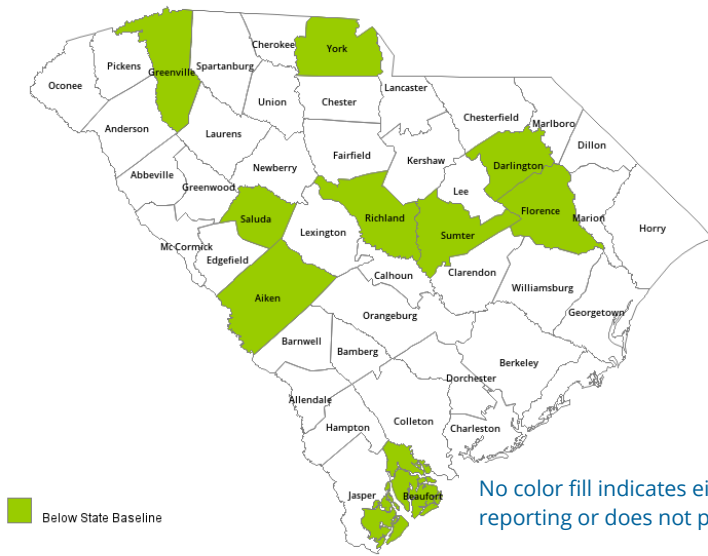
Reports were received from providers in 9 counties, representing all 4 DHEC Public Health regions.

ILI percentage is dependent upon the number of reporting providers and/or can vary by disease activity or the number of providers submitting reports.

Percentage of Influenza-Like Illness (ILI) Visits Reported by Sentinel Providers for Past and Current Seasons



County ILI Percent



No color fill indicates either no reporting or does not participate.

State ILI Activity Level 2017-18 Calendar by Week of the Year

| OCT | NOV | DEC | JAN | FEB | MAR | APR | MAY | JUN | JUL | AUG | SEP |
|-----|-----|-----|-----|-----|-----|-----|-----|-----|-----|-----|-----|
| 40 | 44 | 48 | 1 | 5 | 9 | 14 | 18 | 22 | 27 | 31 | 35 |
| 41 | 45 | 49 | 2 | 6 | 10 | 15 | 19 | 23 | 28 | 32 | 36 |
| 42 | 46 | 50 | 3 | 7 | 11 | 16 | 20 | 24 | 29 | 33 | 37 |
| 43 | 47 | 51 | 4 | 8 | 12 | 17 | 21 | 25 | 30 | 34 | 38 |
| | | 52 | | | 13 | | | 26 | | | 39 |

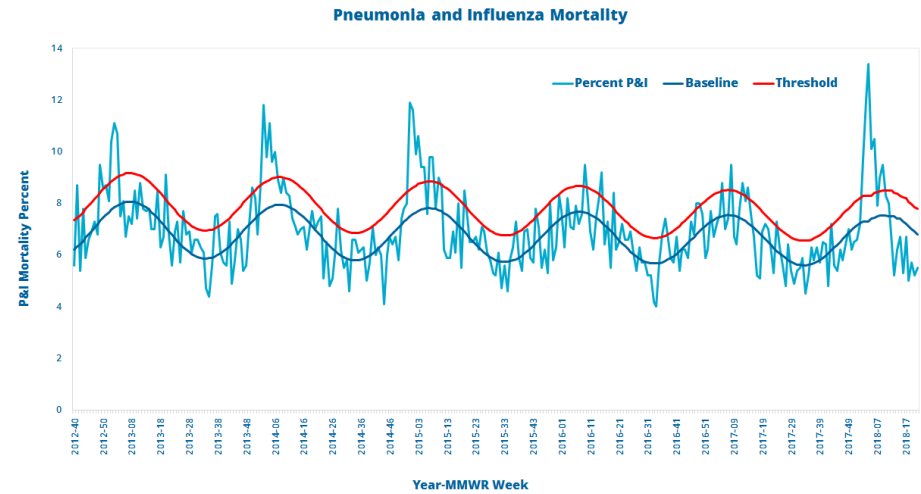
ILI ACTIVITY LEVELS: **MINIMAL** **LOW** **MODERATE** **HIGH**



Influenza-Associated Hospitalizations And Deaths

| Age Group | Hospitalizations | | | Deaths | | |
|------------|------------------|------------------|--------------|-----------|------------------|--------------|
| | This Week | Rate per 100,000 | Season Total | This Week | Rate per 100,000 | Season Total |
| 0 to 4 | 0 | 54.2 | 159 | -- | 1.0 | 3 |
| 5 to 17 | 0 | 17.5 | 141 | -- | -- | -- |
| 18 to 49 | 0 | 29.2 | 585 | -- | 1.3 | 27 |
| 50 to 64 | 1 | 115.9 | 1055 | -- | 5.6 | 51 |
| 65 & older | 0 | 406.3 | 2567 | -- | 32.3 | 204 |
| Total | 1 | 90.8 | 4507 | -- | 5.7 | 285 |

The percentage of deaths attributed to pneumonia and influenza was 5.5%. This is **below** the epidemic threshold for the week ending May 26, 2018.



Reported Influenza-Associated Hospitalizations by Age Group, 2015-16 Season to Present

