

Geographic Spread



South Carolina reported **regional activity** this week.



Influenza-Associated Hospitalizations and Deaths

A total of **46** influenza-associated hospitalizations were reported by 41 hospitals. The cumulative hospitalization rate is **88.2** per 100,000. There were **3** laboratory-confirmed influenza-associated deaths reported; however, **all** deaths occurred in previous weeks. The cumulative mortality rate is **5.0** per 100,000. Compared to the previous week, the number of reported hospitalizations **decreased** by **7 (13.2%)** and number of reported deaths **decreased** by **3 (100%)**. In the current flu season, there have been **4,376** influenza-associated hospitalizations and **249** influenza-associated deaths reported.



Virologic Surveillance

A total of **1,059** influenza cases (**1,035** positive rapid antigen detection tests; **24** lab-confirmed tests) were reported from 35 counties representing all four DHEC Public Health regions. Influenza B was most frequently reported by clinical labs. Compared to the previous week, this is a **decrease** of **560** cases (**34.6%**). In the current flu season, there have been **132,649** influenza cases (**129,267** positive rapid antigen detection tests; **3,382** lab-confirmed tests) reported.



Influenza-Like Illness Surveillance

The percent of patient visits to sentinel providers for an influenza-like illness (ILI) was **2.51%**, which is **below** South Carolina's baseline (**3.13%**). Compared to the previous week, this is a **decrease** of **0.35%**.

The ILI activity level was **low**.

For a description of South Carolina's influenza surveillance components and definitions go to:

<http://www.scdhec.gov/Health/DiseasesandConditions/InfectiousDiseases/Flu/FluData/>

For national surveillance, please visit:

<https://www.cdc.gov/flu/weekly/>

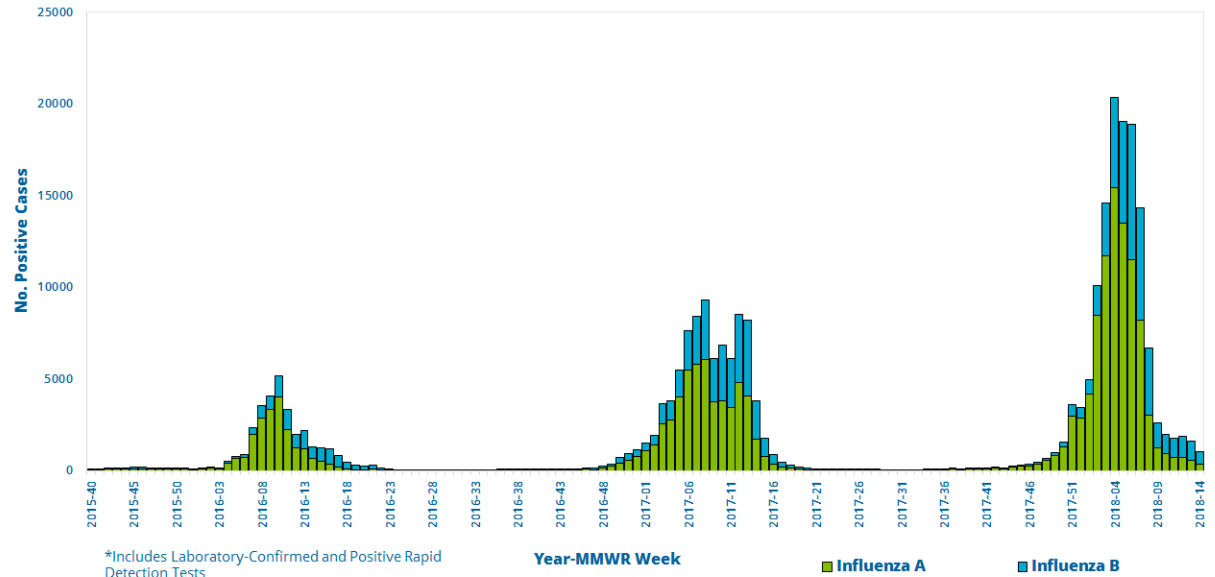


Virologic Surveillance

This week, **24** lab-confirmed cases and **1,035** positive rapid influenza detection tests were reported by clinical labs.

Influenza B was most frequently reported by clinical labs.

Influenza Cases* Reported by Clinical and Public Health Labs, 2015-16 Season to Present



Influenza Cases Reported by Public Health and Clinical Labs, This Week and Season Total

| Influenza Type | Public Health Lab | | Clinical Labs | | Total | |
|------------------------------|-------------------|--------------------|--------------------|----------------------|--------------------|----------------------|
| | This Week | Season Total | This Week | Season Total | This Week | Season Total |
| Overall | 0 | 159 | 1,059 | 132,490 | 1,059 | 132,649 |
| Influenza A | 0 | 127 (79.9%) | 349 (33.0%) | 90395 (%) | 349 (33.0%) | 90522 (68.2%) |
| A (H3) | -- | 96 (75.6%) | -- | 380 (0.4%) | -- | 476 (0.5%) |
| A (H1N1) | -- | 31 (24.4%) | 1 (0.3%) | 158 (0.2%) | 1 (0.3%) | 189 (0.2%) |
| A (not subtyped) | -- | -- | 348 (99.7%) | 89857 (99.4%) | 348 (99.7%) | 89857 (99.3%) |
| Influenza B | 0 | 32 (20.1%) | 710 (67.0%) | 41590 (31.4%) | 710 (67.0%) | 41622 (31.4%) |
| B (Victoria) | -- | -- | -- | -- | -- | -- |
| B (Yamagata) | -- | 29 (90.6%) | -- | -- | -- | 29 (0.1%) |
| B (lineage not performed) | -- | 3 (9.4%) | 710 (100%) | 41590 (100%) | 710 (100%) | 41593 (99.9%) |
| Influenza (not typed) | -- | -- | 0 | 505 (0.4%) | 0 | 505 (0.4%) |



Virologic Surveillance

Map of Influenza Cases (n)*
and Influenza Case Rate/100,000 By County
For Week Ending 4/7/2018

Weekly Influenza Case Rate per 100K

0 to 25 persons



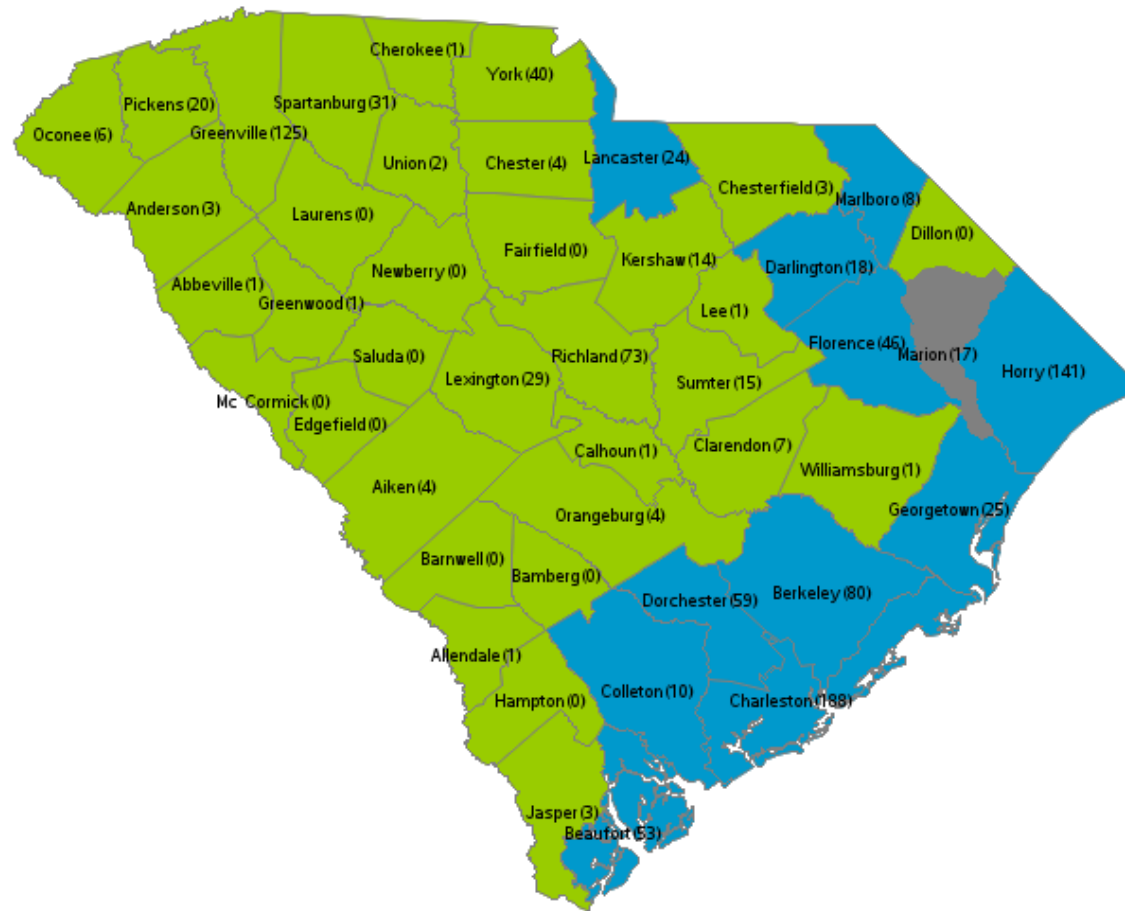
26 to 50 persons



51 to 75 persons



Greater than 75 persons



*Includes all lab-confirmed and positive rapid cases



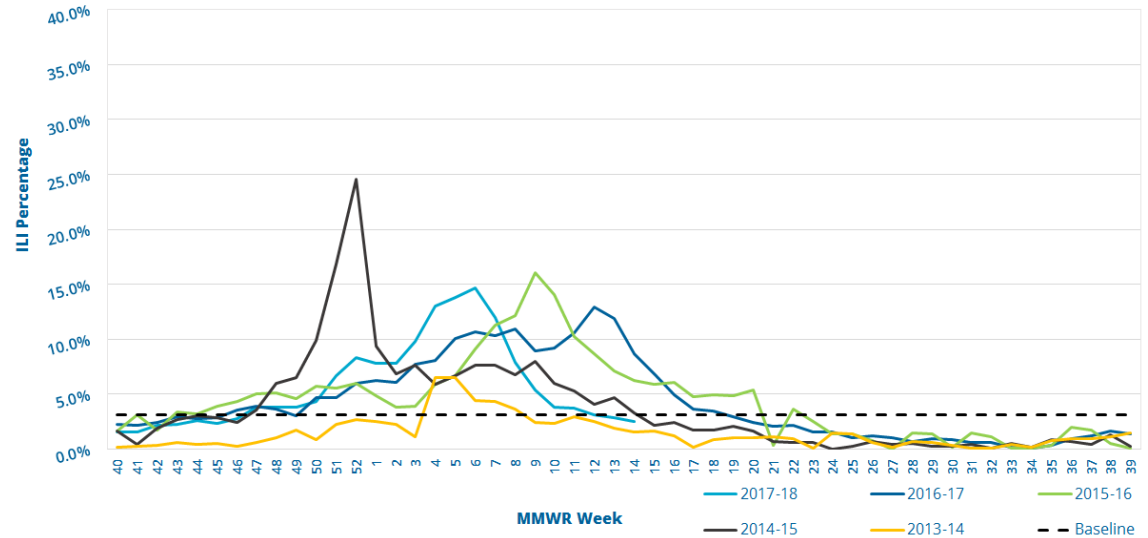
Influenza-Like Illness Surveillance

This week, the ILI activity level was **low** and **2.51%** of patient visits to SC ILINet providers was attributed to an influenza-like illness. This is **below** the state baseline, **3.13%**.

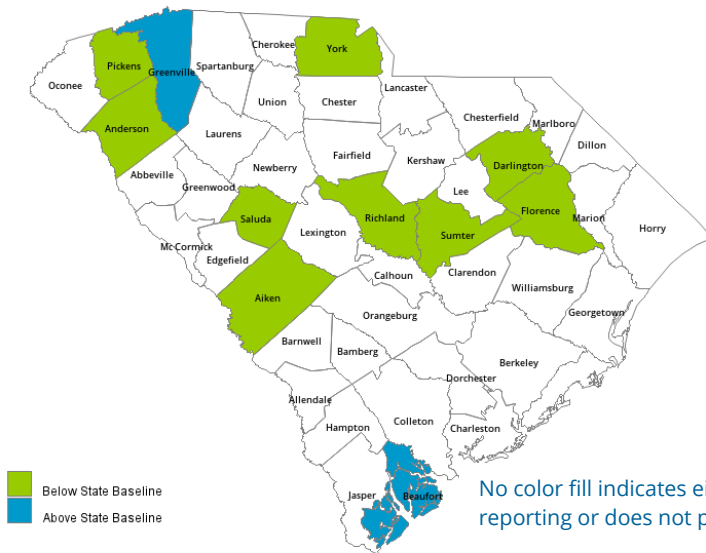
Reports were received from providers in 11 counties, representing all 4 DHEC Public Health regions.

ILI percentage is dependent upon the number of reporting providers and/or can vary by disease activity or the number of providers submitting reports.

Percentage of Influenza-Like Illness (ILI) Visits Reported by Sentinel Providers for Past and Current Seasons



County ILI Percent



State ILI Activity Level 2017-18 Calendar by Week of the Year

| OCT | NOV | DEC | JAN | FEB | MAR | APR | MAY | JUN | JUL | AUG | SEP |
|-----|-----|-----|-----|-----|-----|-----|-----|-----|-----|-----|-----|
| 40 | 44 | 48 | 1 | 5 | 9 | 14 | 18 | 22 | 27 | 31 | 35 |
| 41 | 45 | 49 | 2 | 6 | 10 | 15 | 19 | 23 | 28 | 32 | 36 |
| 42 | 46 | 50 | 3 | 7 | 11 | 16 | 20 | 24 | 29 | 33 | 37 |
| 43 | 47 | 51 | 4 | 8 | 12 | 17 | 21 | 25 | 30 | 34 | 38 |
| | | 52 | | | 13 | | | 26 | | | 39 |

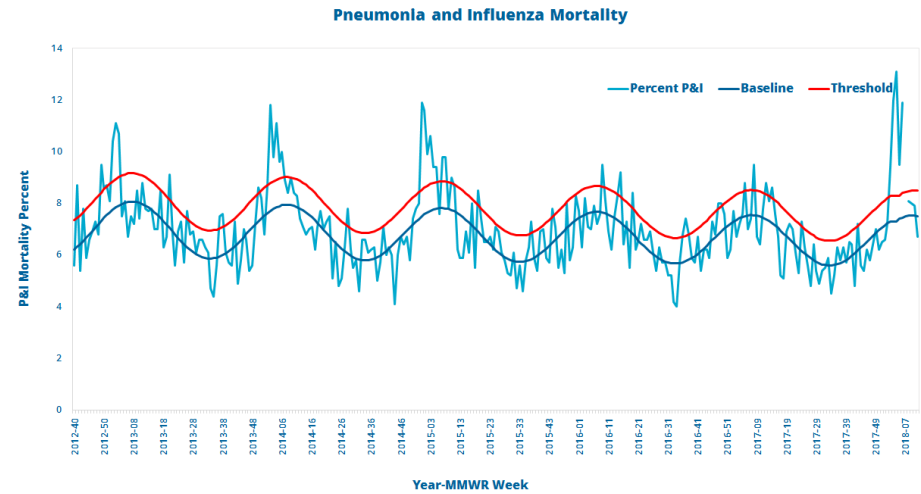
ILI ACTIVITY LEVELS: **MINIMAL** **LOW** **MODERATE** **HIGH**



Influenza-Associated Hospitalizations And Deaths

| Age Group | Hospitalizations | | | Deaths | | |
|------------|------------------|------------------|--------------|-----------|------------------|--------------|
| | This Week | Rate per 100,000 | Season Total | This Week | Rate per 100,000 | Season Total |
| 0 to 4 | 2 | 52.5 | 154 | -- | 1.0 | 3 |
| 5 to 17 | 0 | 16.9 | 136 | -- | -- | -- |
| 18 to 49 | 6 | 28.3 | 566 | -- | 1.3 | 26 |
| 50 to 64 | 17 | 112.0 | 1020 | -- | 4.5 | 41 |
| 65 & older | 21 | 395.6 | 2500 | -- | 28.3 | 179 |
| Total | 46 | 88.2 | 4376 | 0 | 5.0 | 249 |

The percentage of deaths attributed to pneumonia and influenza was 6.7%. This is **below** the epidemic threshold for the week ending March 17, 2018.



Reported Influenza-Associated Hospitalizations by Age Group, 2015-16 Season to Present

