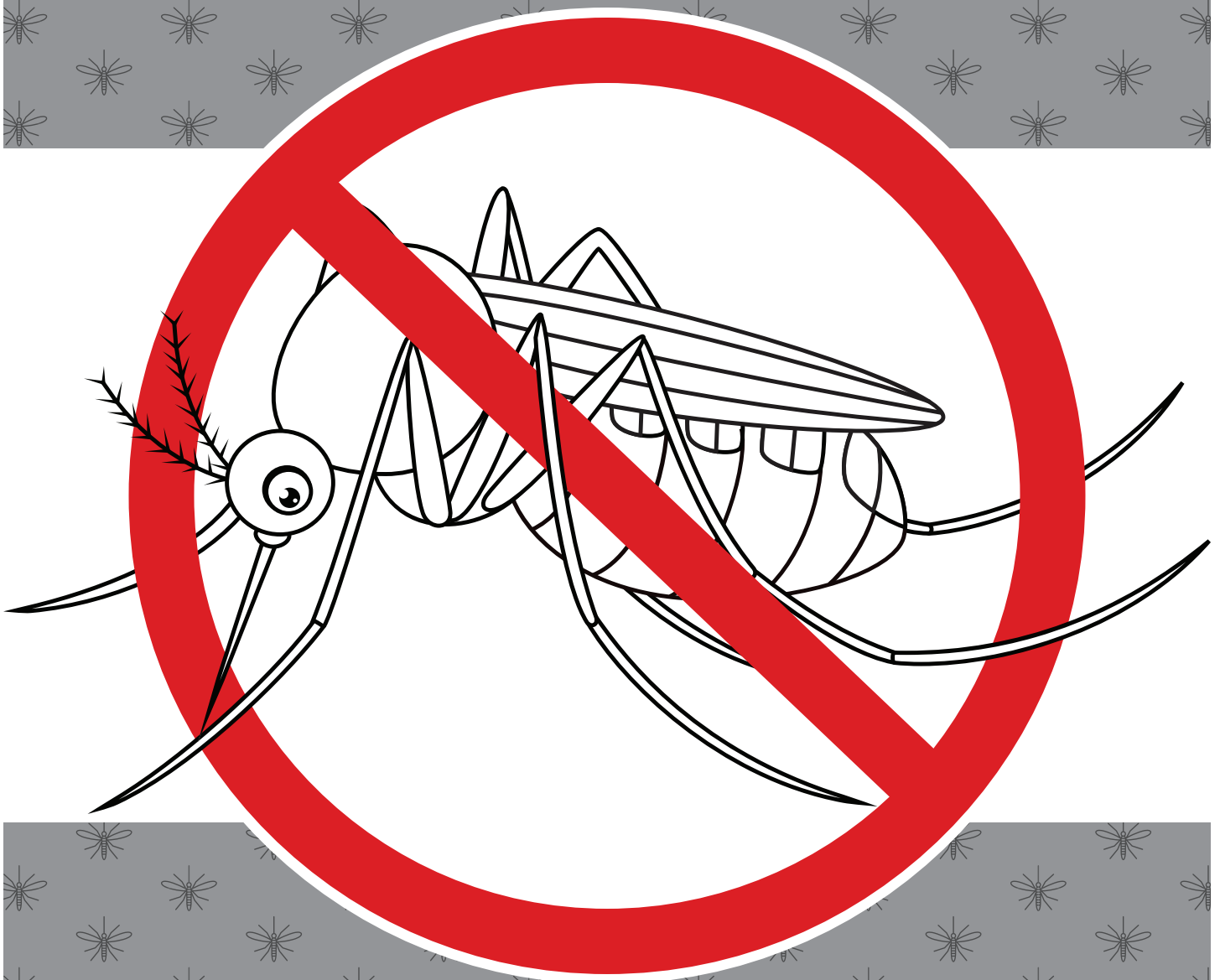


# PROTECT YOURSELF

from Mosquito-Borne Diseases



*Activity Book from DPH's Division of Vector-Borne Diseases*

[DPH.SC.GOV/MOSQUITOES](http://DPH.SC.GOV/MOSQUITOES)

# WHAT ARE MOSQUITO-BORNE DISEASES?

Mosquitoes can give illnesses to people.

**Symptoms include:**



*Headache*



*Fever*



*Chills*



*Neck/Joint Pain*



*Nausea*

**THE MOST COMMON DISEASES IN SOUTH CAROLINA ARE:**

West Nile Virus

Eastern Equine Encephalitis

La Crosse Encephalitis

Saint Louis Encephalitis

# MOSQUITO BODY PARTS

Mosquitoes, like all other insects, have three main body parts (Head, Thorax, and Abdomen) and six total legs. Mosquitoes have two eyes, two antennae, and one proboscis.

**Can you label the mosquito parts correctly?**

## WORD BANK

Abdomen

Head

Proboscis

Antennae

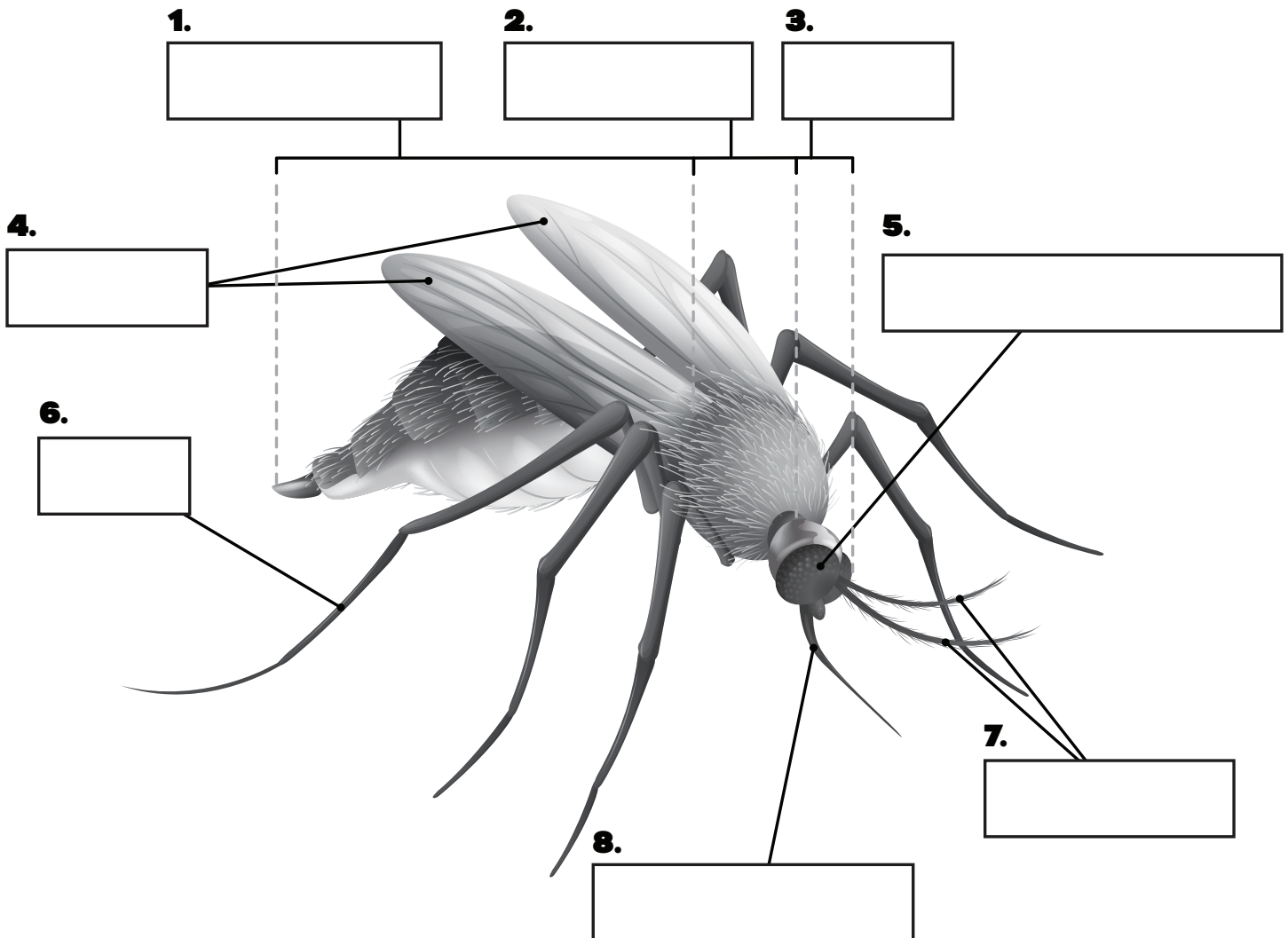
Legs

*(needle-like mouth)*

Eyes

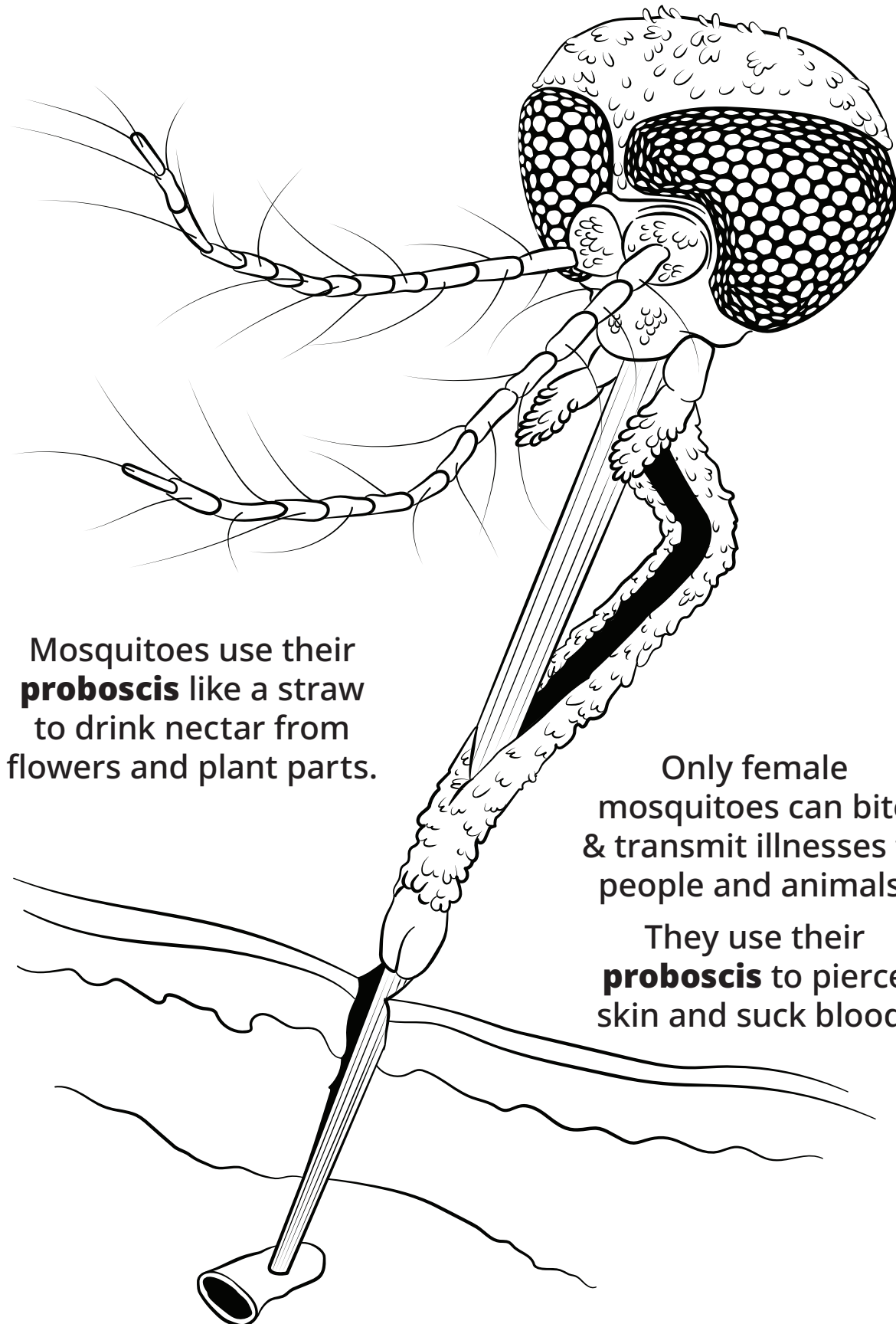
Thorax

Wings



**Answers:** 1. Abdomen 2. Thorax 3. Head 4. Wings 5. Compound Eyes 6. Legs 7. Antennae 8. Proboscis

# SUCKING MOUTHPARTS



Mosquitoes use their **proboscis** like a straw to drink nectar from flowers and plant parts.

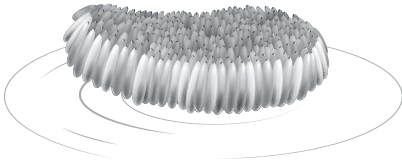
Only female mosquitoes can bite & transmit illnesses to people and animals.

They use their **proboscis** to pierce skin and suck blood.



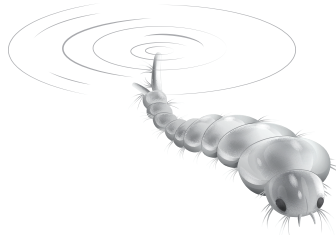
# MOSQUITO LIFE CYCLE

Mosquitoes become adults after going through three immature stages that develop in standing water. This takes about about 1 week:



**Egg**

3 hours to 2 days



**Larva**

5 to 9 days

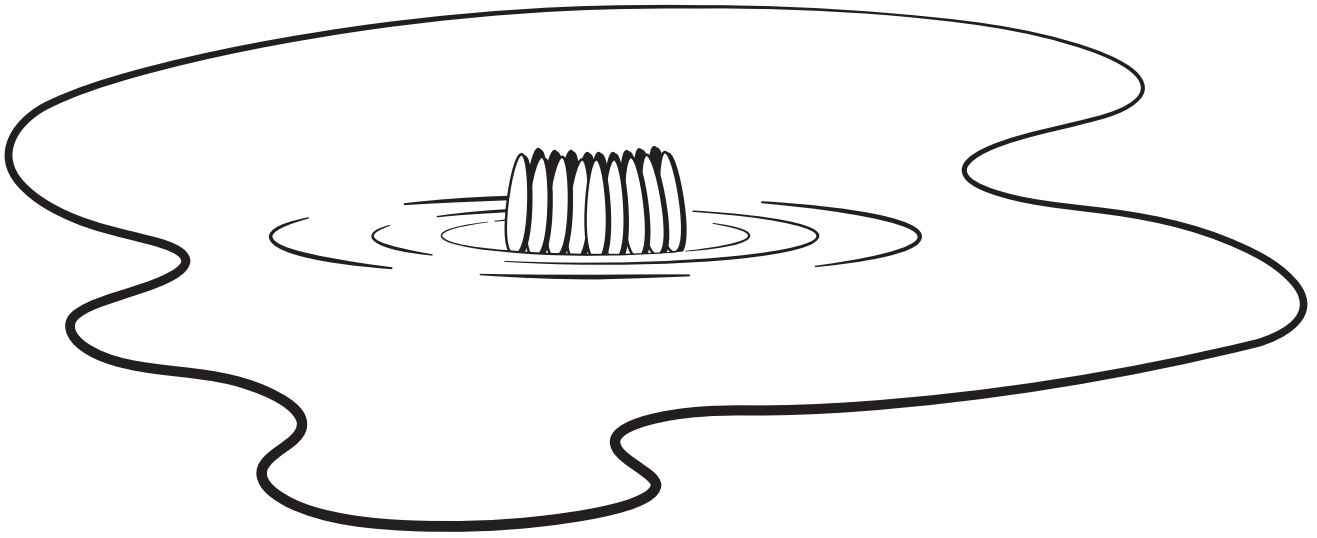


**Pupa**

1 to 2 days

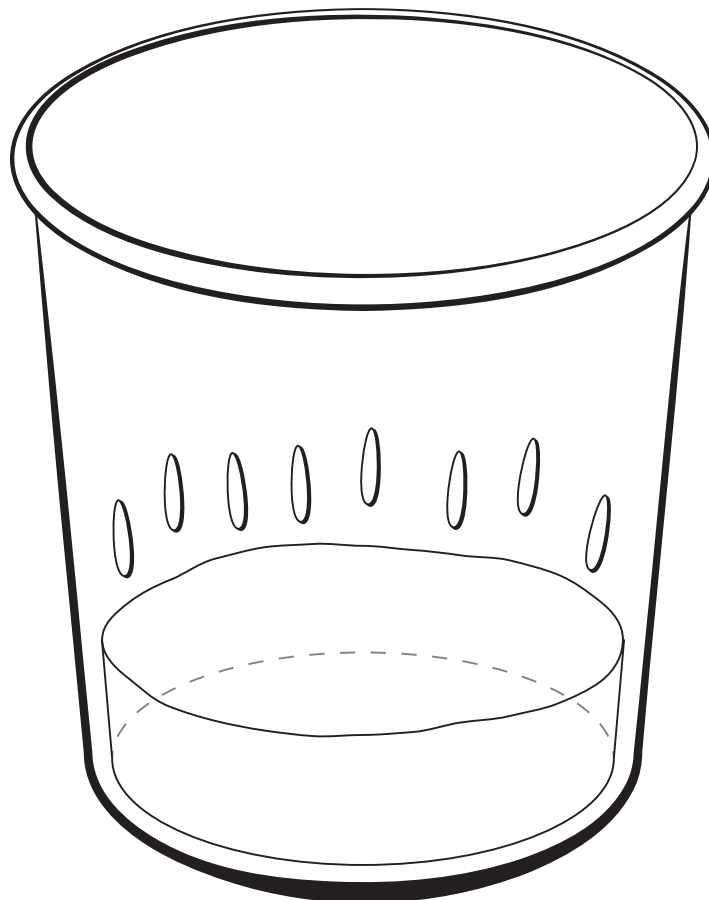


After feeding on blood, female  
mosquitoes lay their eggs...




ON OR IN THE WATER

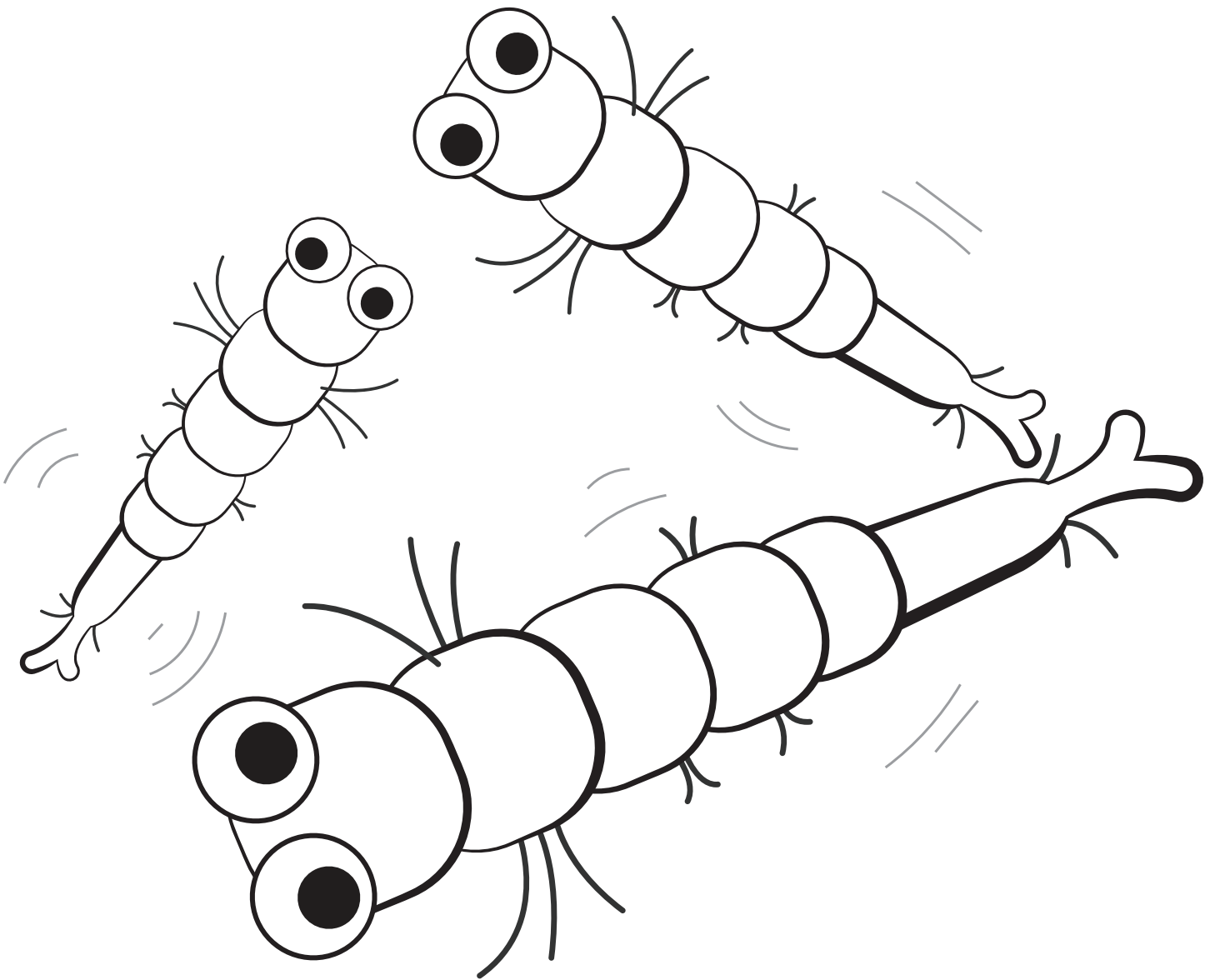
**or**



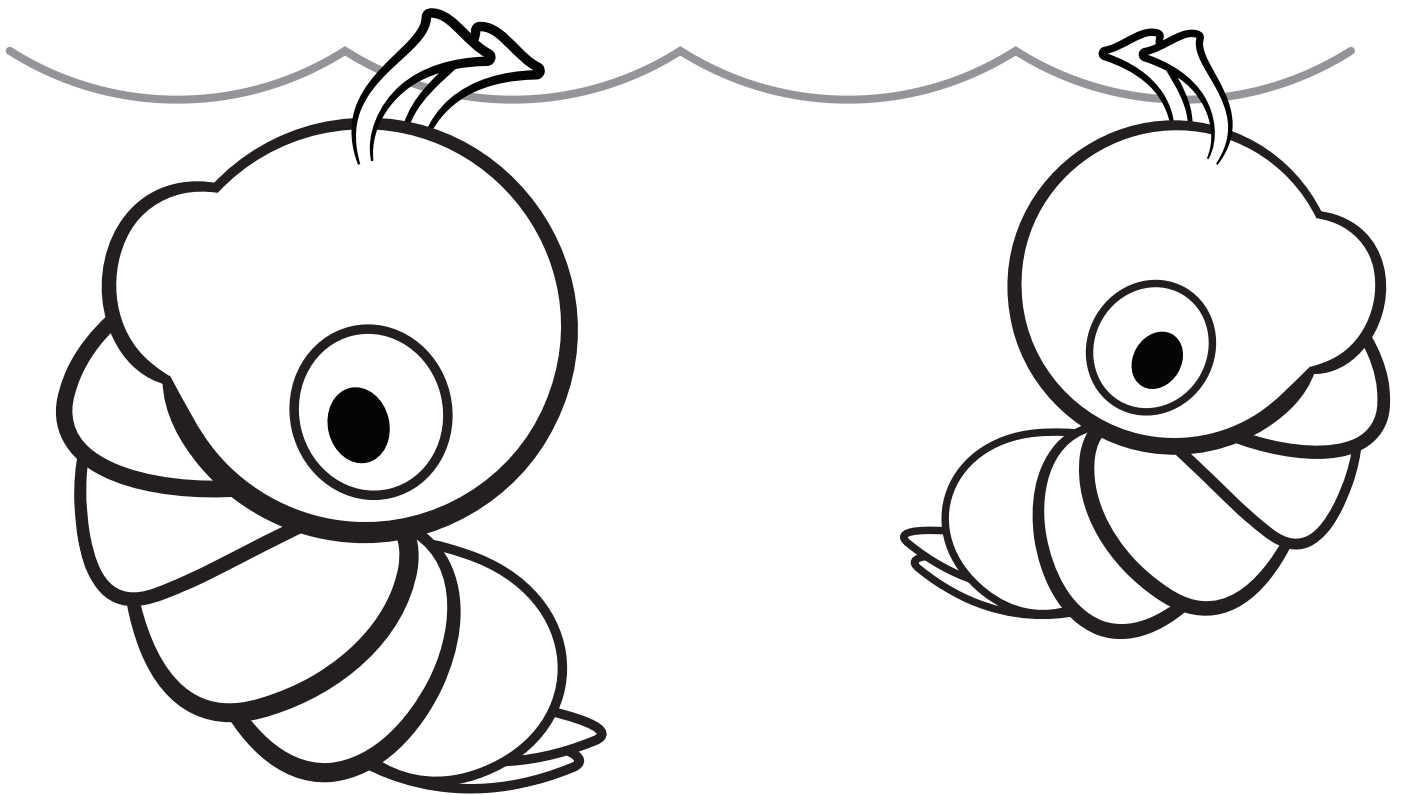
OUT OF THE WATER



Larvae pop out of eggs and  
wiggle in water for several days,  
growing bigger and bigger.



Larvae develop into pupae that tumble around the water's surface.



Finally, the adult mosquito emerges from the pupa and searches for food.



Both males and females feed on nectar, but only females drink blood.

# Can you label the correct life stage?

## WORD BANK

Eggs

Larva

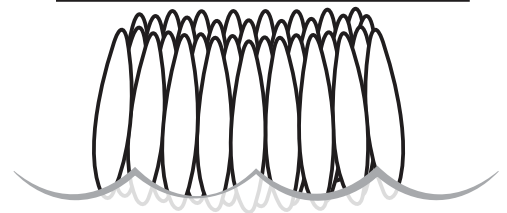
Pupa

Adult

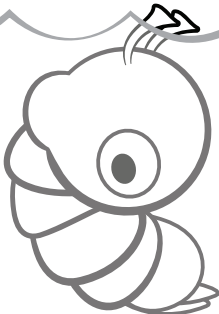
1.



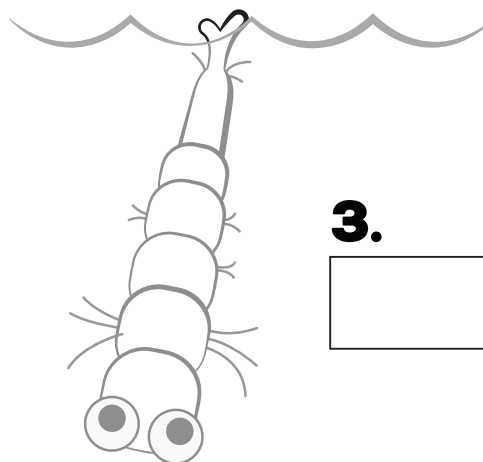
2.



4.



3.



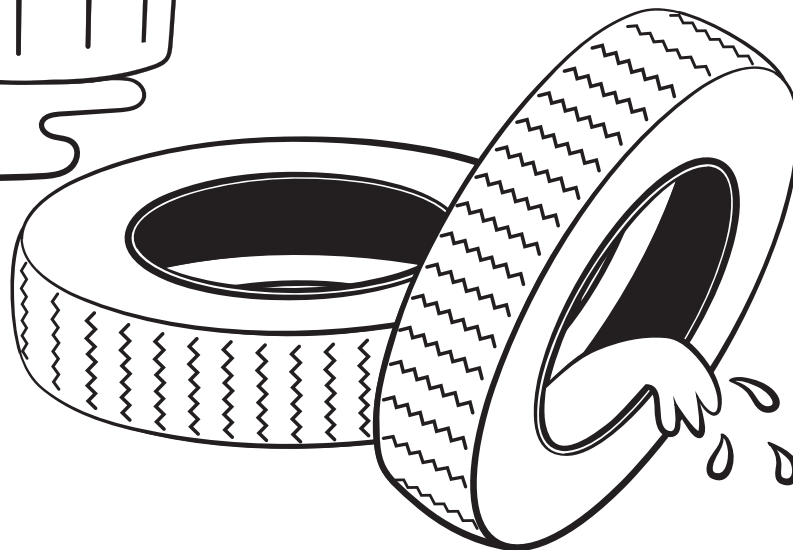
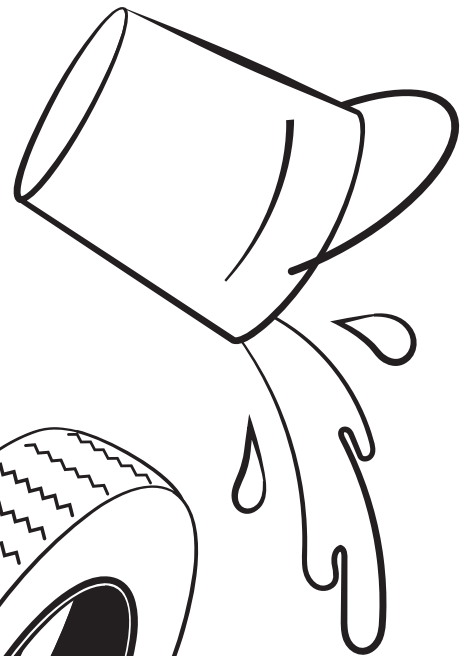
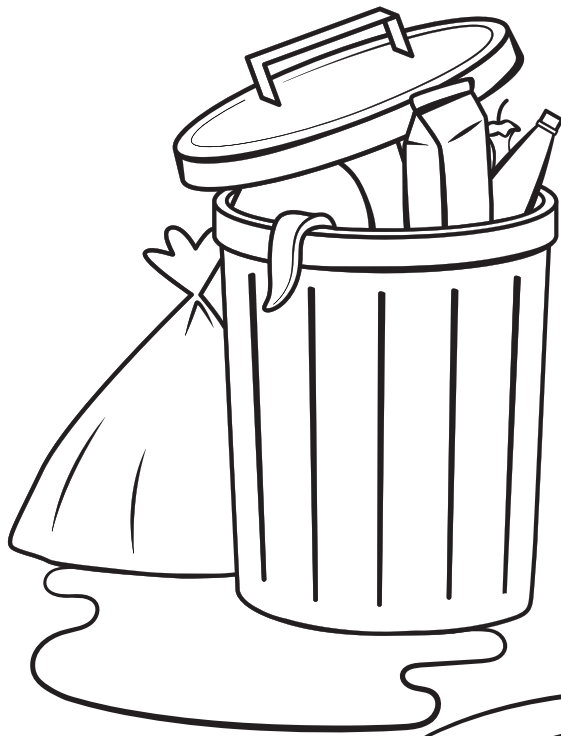
Answers: 1. Adult 2. Eggs 3. Larva 4. Pupa

The best way to reduce mosquitoes  
is to dump any standing water  
where they can grow!



**Did You Know?**

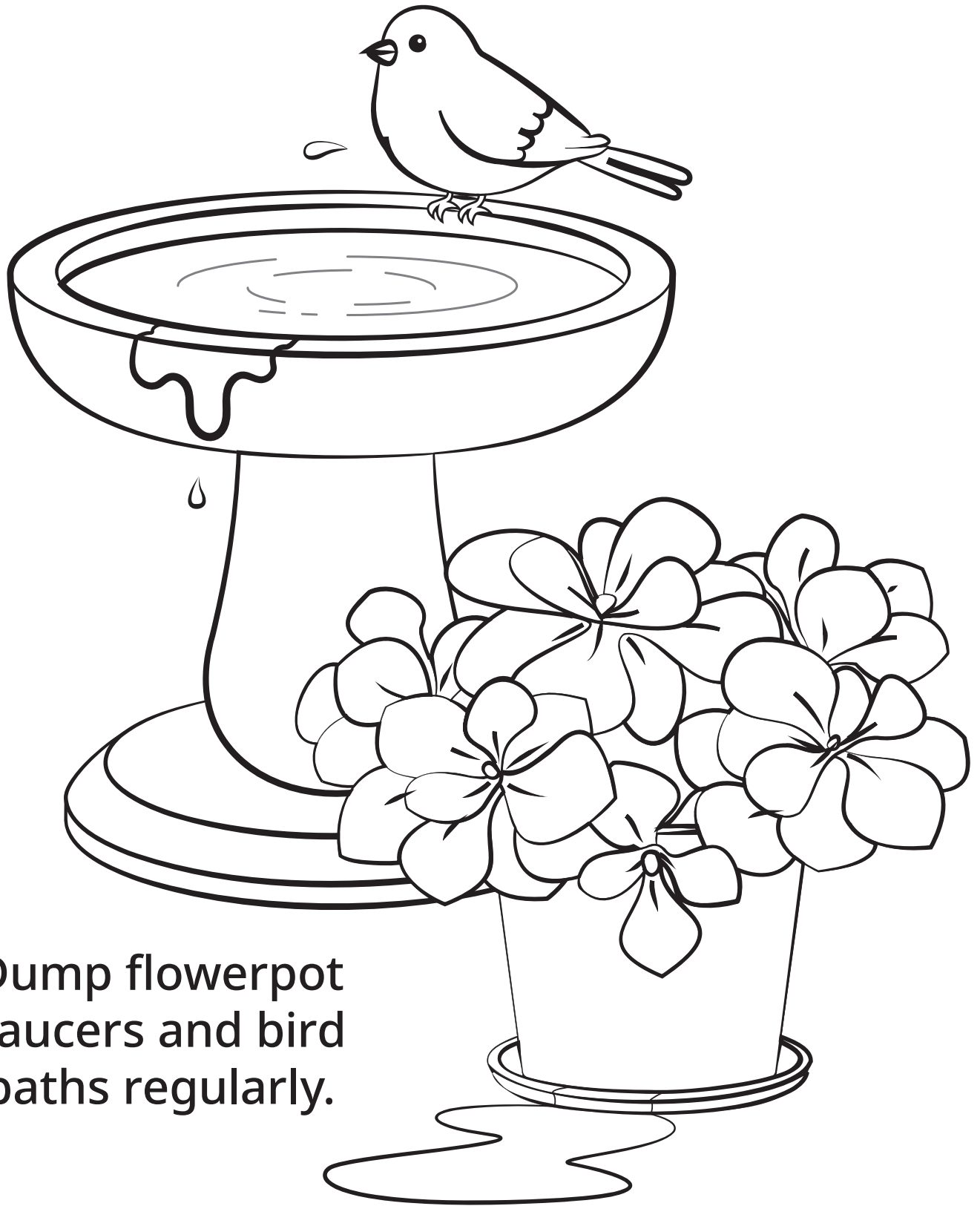
Mosquitoes  
can develop  
in just a bottle  
cap amount  
of water?





Clean out pet food and  
water bowls regularly and  
scrub the edges.



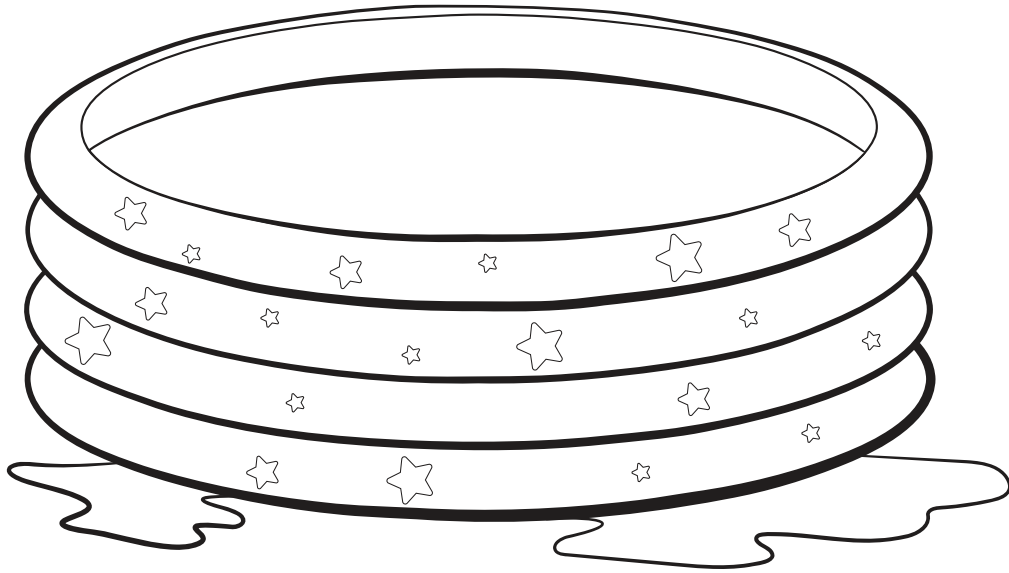


Dump flowerpot  
saucers and bird  
baths regularly.

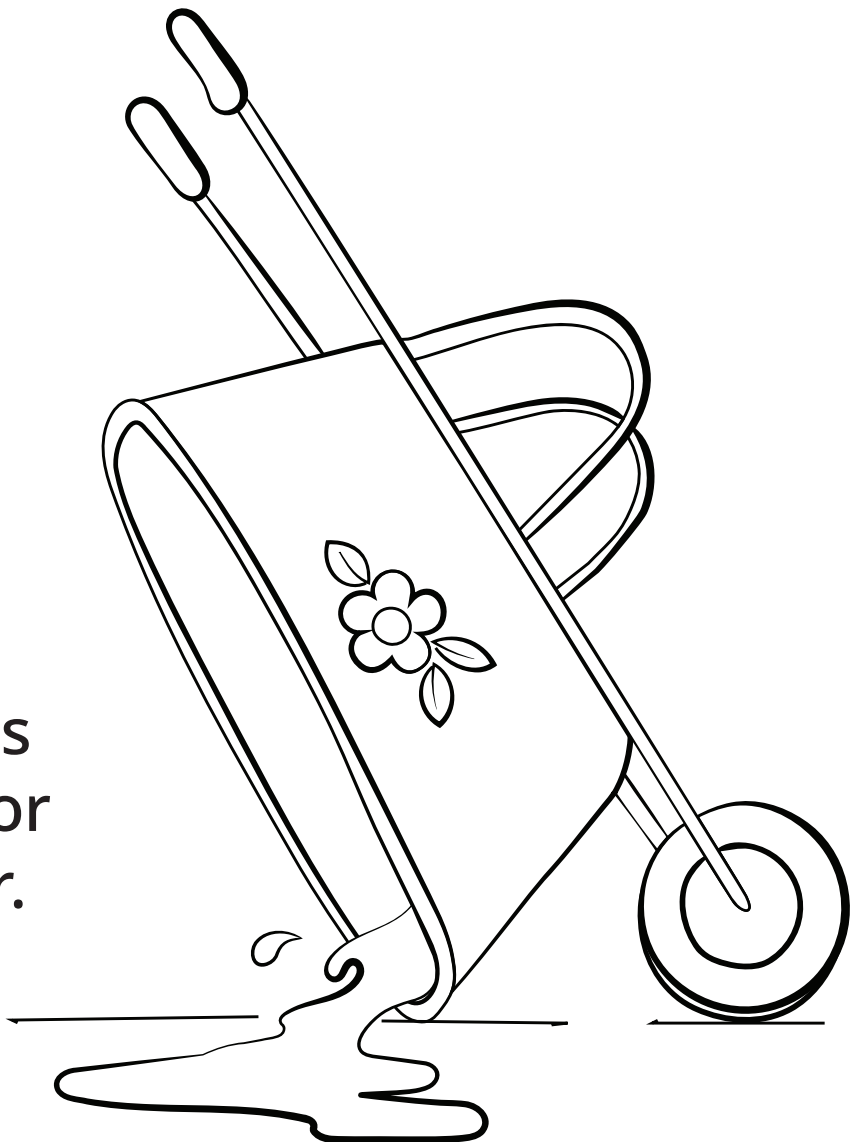
Check old tires and yard toys  
for collecting water.



Store kiddie pools...



and  
wheelbarrows  
upside down or  
under shelter.



Clear leaf litter and keep grass and shrubs trimmed. Adult mosquitoes like shady resting areas.

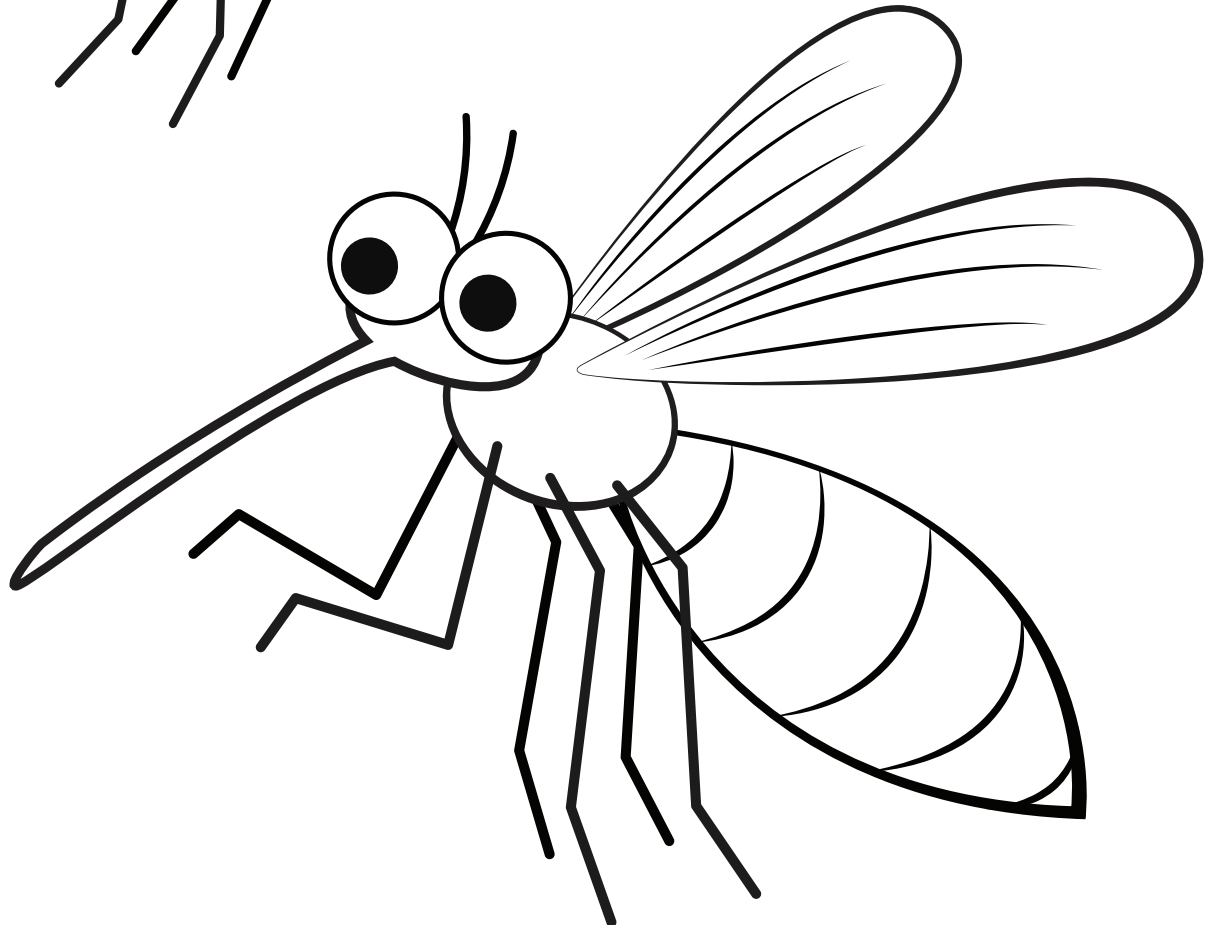
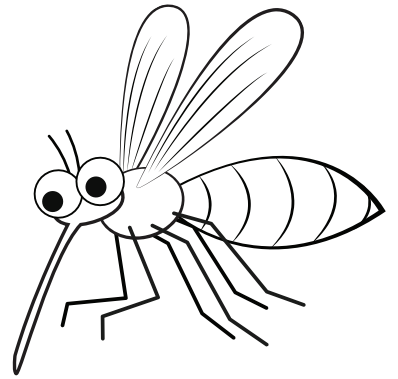
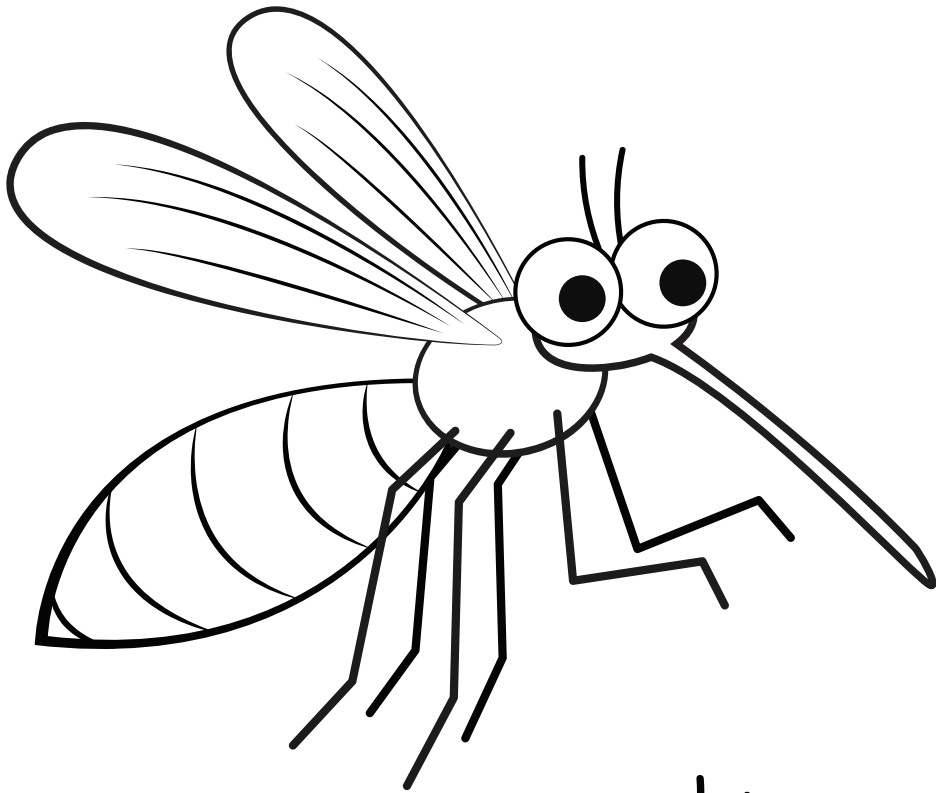


Can you spot the water-holding items  
perfect for laying mosquito eggs?

**Hint: There are 7!**

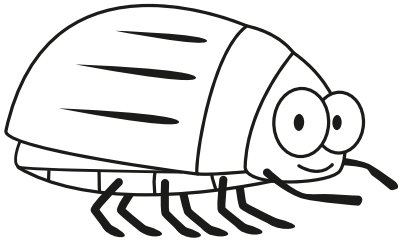


Mosquitoes can be all different colors!  
**What will yours look like?**



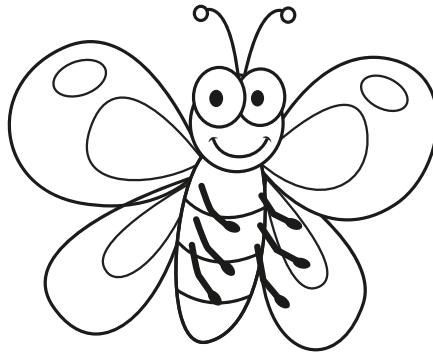
# NOT ALL BUGS ARE BAD!

Can you unscramble the names of these friendly bugs?



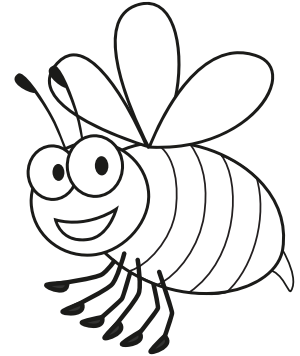
LEBETE

1. \_\_\_\_\_



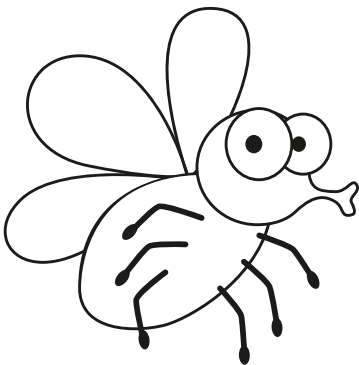
FUTLETYBR

2. \_\_\_\_\_



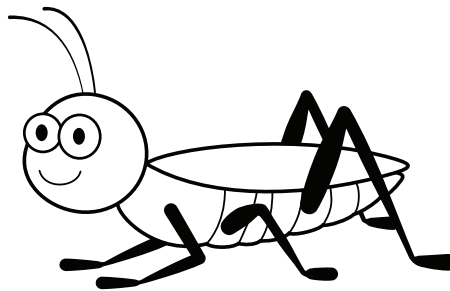
EBE

3. \_\_\_\_\_



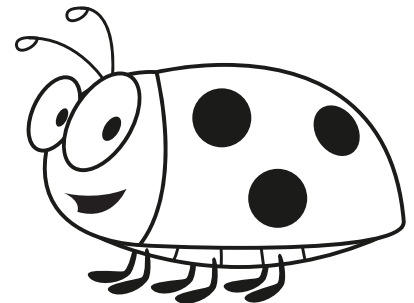
LYF

4. \_\_\_\_\_



SARGASPEROHP

5. \_\_\_\_\_



DUAGLYB

6. \_\_\_\_\_

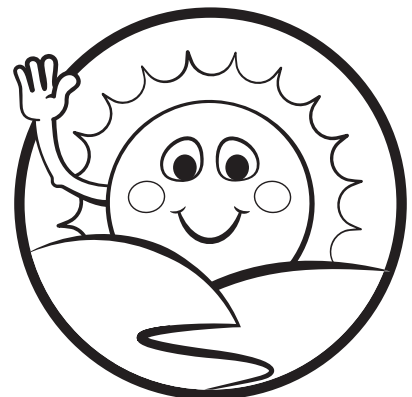
# PROTECT YOURSELF!

Wear insect repellent  
and long sleeves and pants.

**Always have an adult apply your insect repellent!**



Mosquitoes are most  
active at dawn and dusk  
and in shaded areas  
during the day.





# FIND THE MOSQUITOES!

Hint: There are 11!

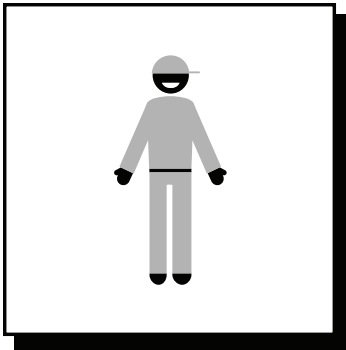


# HOW CAN YOU PROTECT YOURSELF?

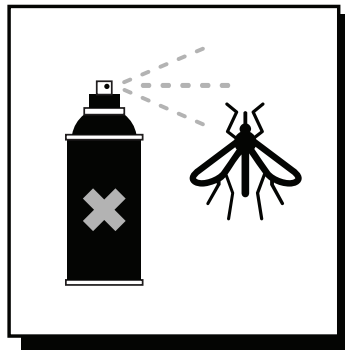
Prevent mosquito bites as much as possible.

Match the numbers with the correct protective actions.

1. \_\_\_\_\_



2. \_\_\_\_\_



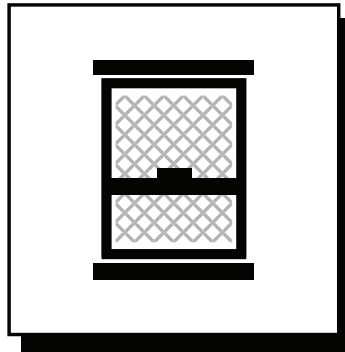
3. \_\_\_\_\_



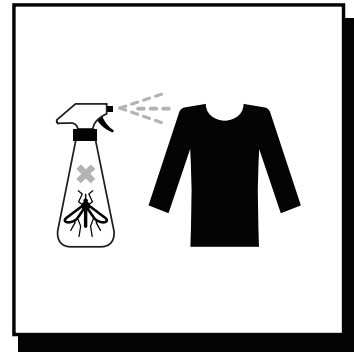
4. \_\_\_\_\_



5. \_\_\_\_\_



6. \_\_\_\_\_



**A.** Sleep under mosquito nets

**B.** Empty water out of containers

**C.** Use insect repellents

**D.** Keep screens on windows intact

**E.** Wear long sleeve shirts and pants

**F.** Spray clothing with pretreatment repellent

**G.** Avoid being outside at dawn and dusk

# MOSQUITO WORD SEARCH

Y Q W D D B M Q B J J S W A V R A L K J B B A  
H S C K L I I G J C B T E M P O W F J H N G A  
I U P V C T V T O N C A S L L X R E B M Y P K  
X R O S E G G U E V P G T H A A X V G O D I W  
A I I L K C U Y G Z B N N G T H Y E B S C D S  
P V B L E N A X S X F A I P G H E R B Q A B R  
U E O I K R I J R Q B N L C J E S L G U P O E  
P S Y H P H R N B T S T E U E A S V D I L B N  
B S H C O E A O U A T W V N R D E G R T A W I  
W O V Z Y D L E G H E A I G M A N K P O E M A  
Z R H A R P A I S B K T R N D C L O L K M Q T  
D C B Z D I M R P U C E U J Z H L U R P D R N  
X A S Z U U M R R H U R S P S E I P U H O Q O  
F L D U J F L H A U B J K R J G H C T I O X C  
W A Z B L N Y T Y K R X Y R D T I R E S L J M  
U W V B I R D B A T H F R Z R O X U Q S B P L

**Find the following words in the puzzle!**

Words are hidden **vertically**, **horizontally**, and **diagonally**.

ADULT	CONTAINERS	MALARIA
BIRDBATH	EGG	MOSQUITO
BITE	FEVER	PUPA
BLOODMEAL	HEADACHE	STAGNANT WATER
BUCKETS	ILLNESS	TIRES
BUG SPRAY	ITCH	WEST NILE VIRUS
BUZZ	LA CROSSE VIRUS	
CHILLS	LARVA	

# CONNECT THE DOTS

Reveal the **deadliest animal**  
in the world!

