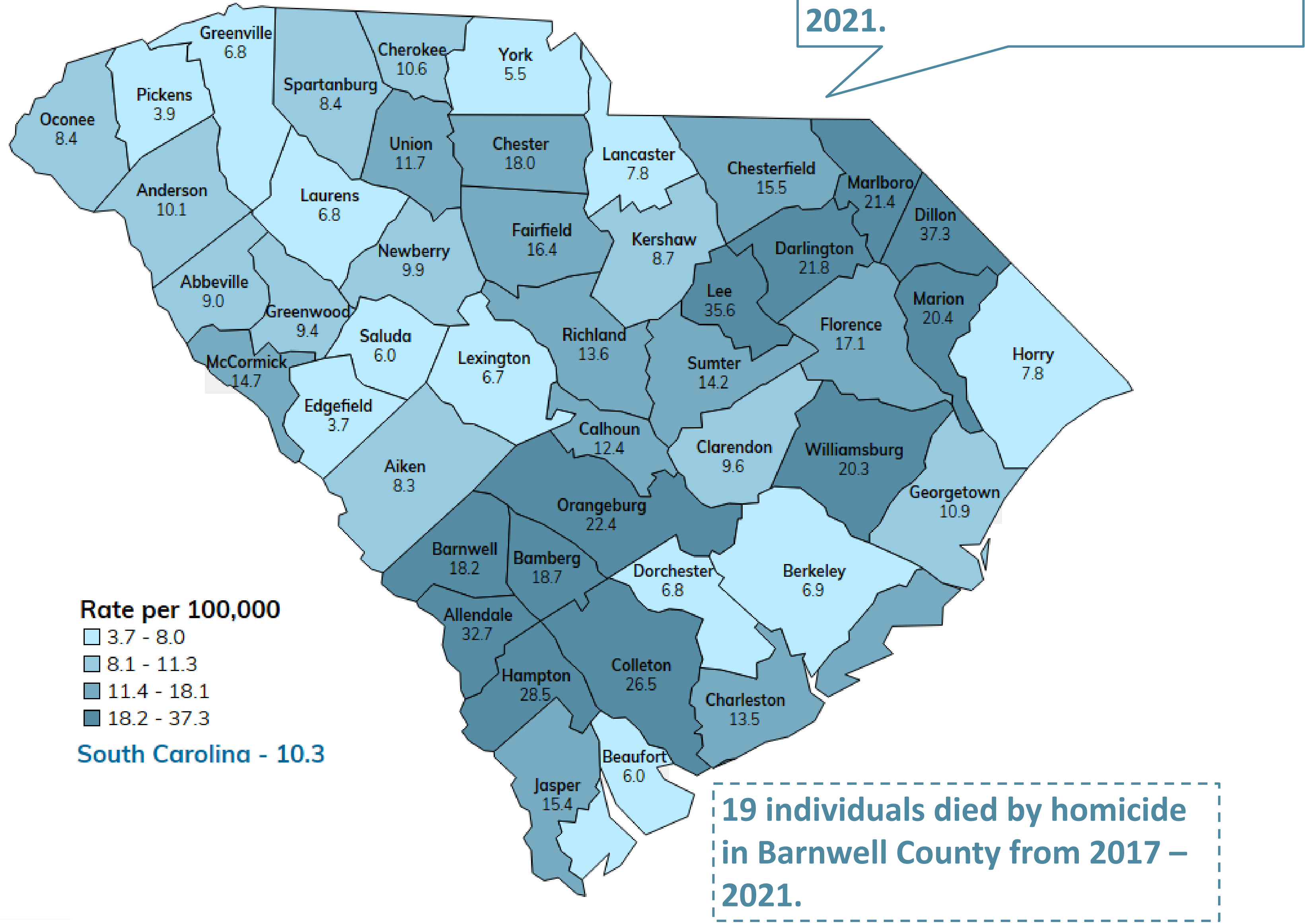


Injury Barnwell County

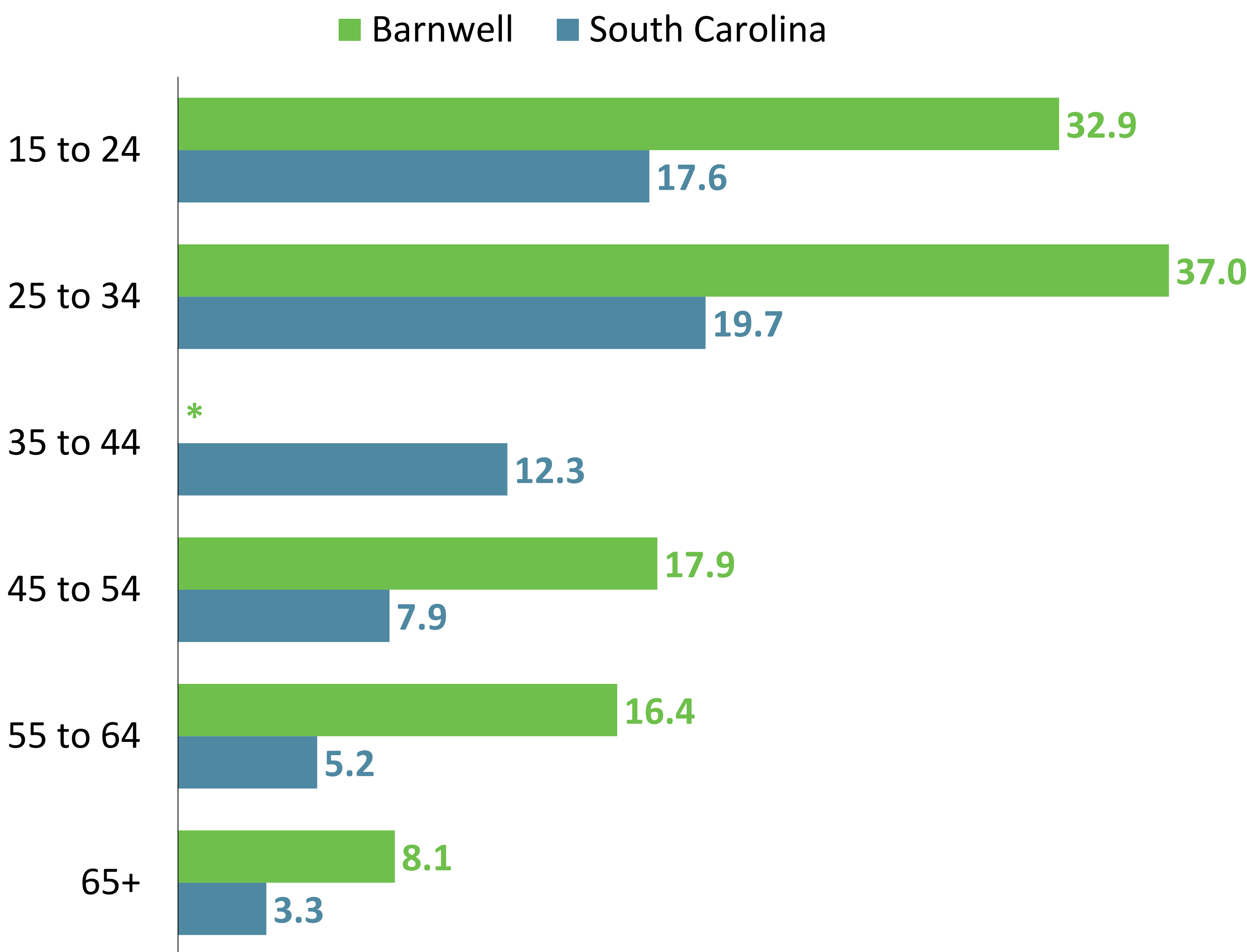
Homicides

Homicides, by County
Rate per 100,000 population



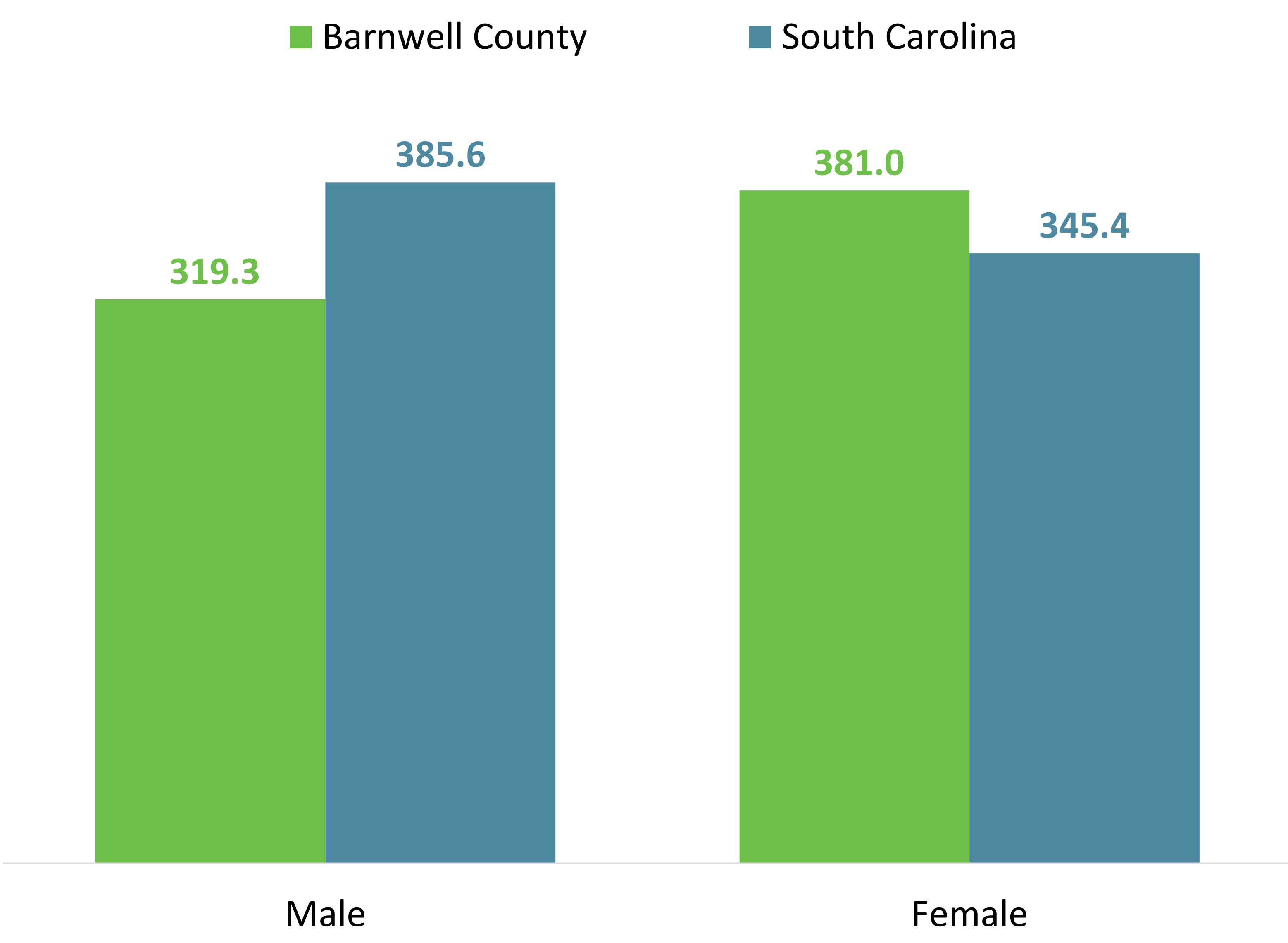
Source: SC VDRS, 2017-2021.
Notes: Fatal injuries occurred in SC (by county of injury). Population for year 2021 based on single-race estimates and for years prior based on bridge-race estimates.

Homicides, by Age Group
Rate per 100,000 population



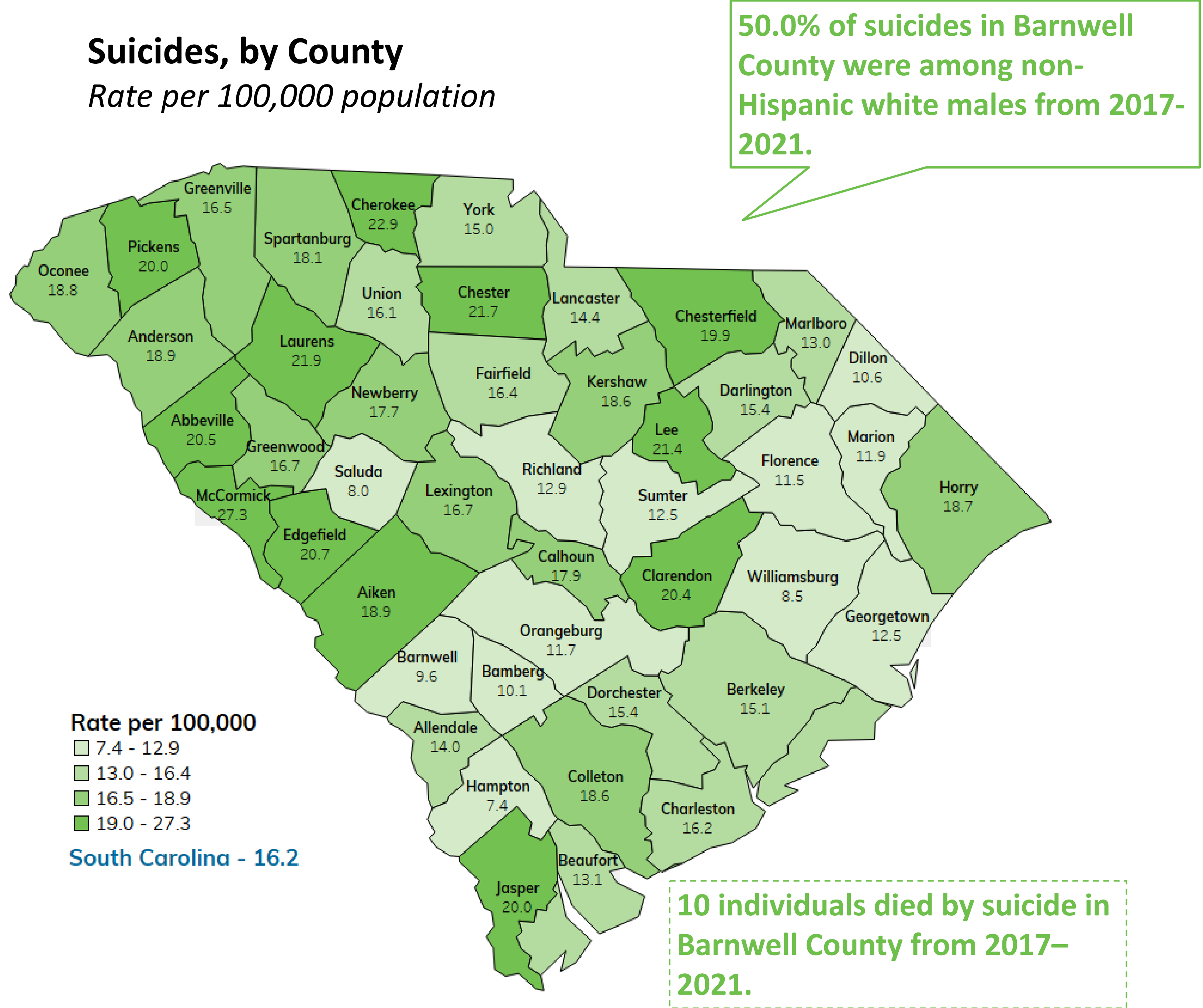
Source: SC VDRS, 2012-2021.
Note: The rate for ages <15 from 2012-2021 in Barnwell County was suppressed due to counts of 0. Rates denoted with a * are suppressed due to counts <5. Population for year 2021 based on single-race estimates and for years prior based on bridge-race estimates.

Assault-Related Emergency Department Visits
Rate per 100,000 population



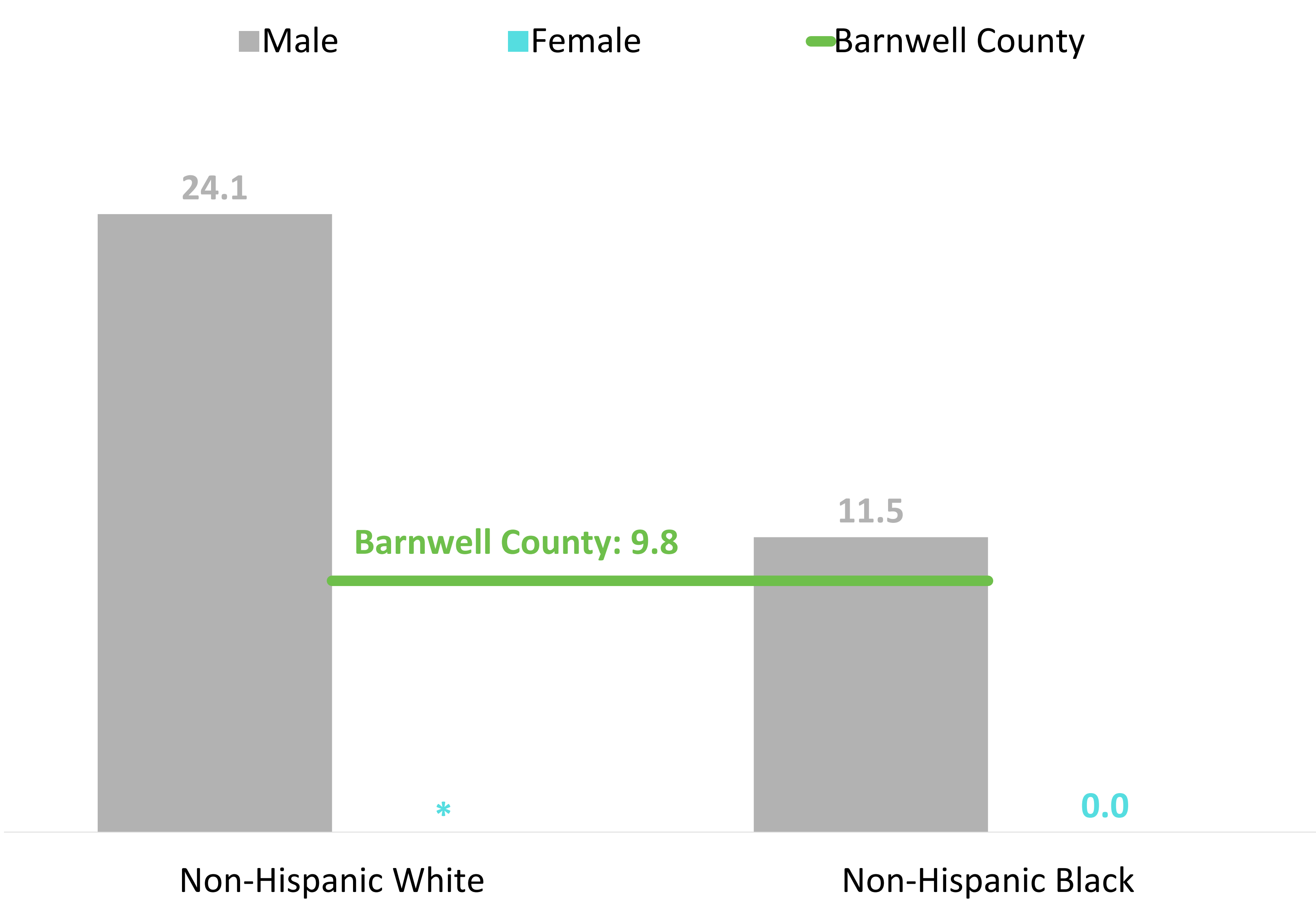
Source: SC RFA ED Visits and Inpatient Discharges, 2017-2021.
Note: Includes cases subsequently admitted to the inpatient setting from the ED and cases coded as an initial encounter for injury. Population for year 2021 based on single-race estimates and for years prior based on bridge-race estimates.

Suicides, by County
Rate per 100,000 population



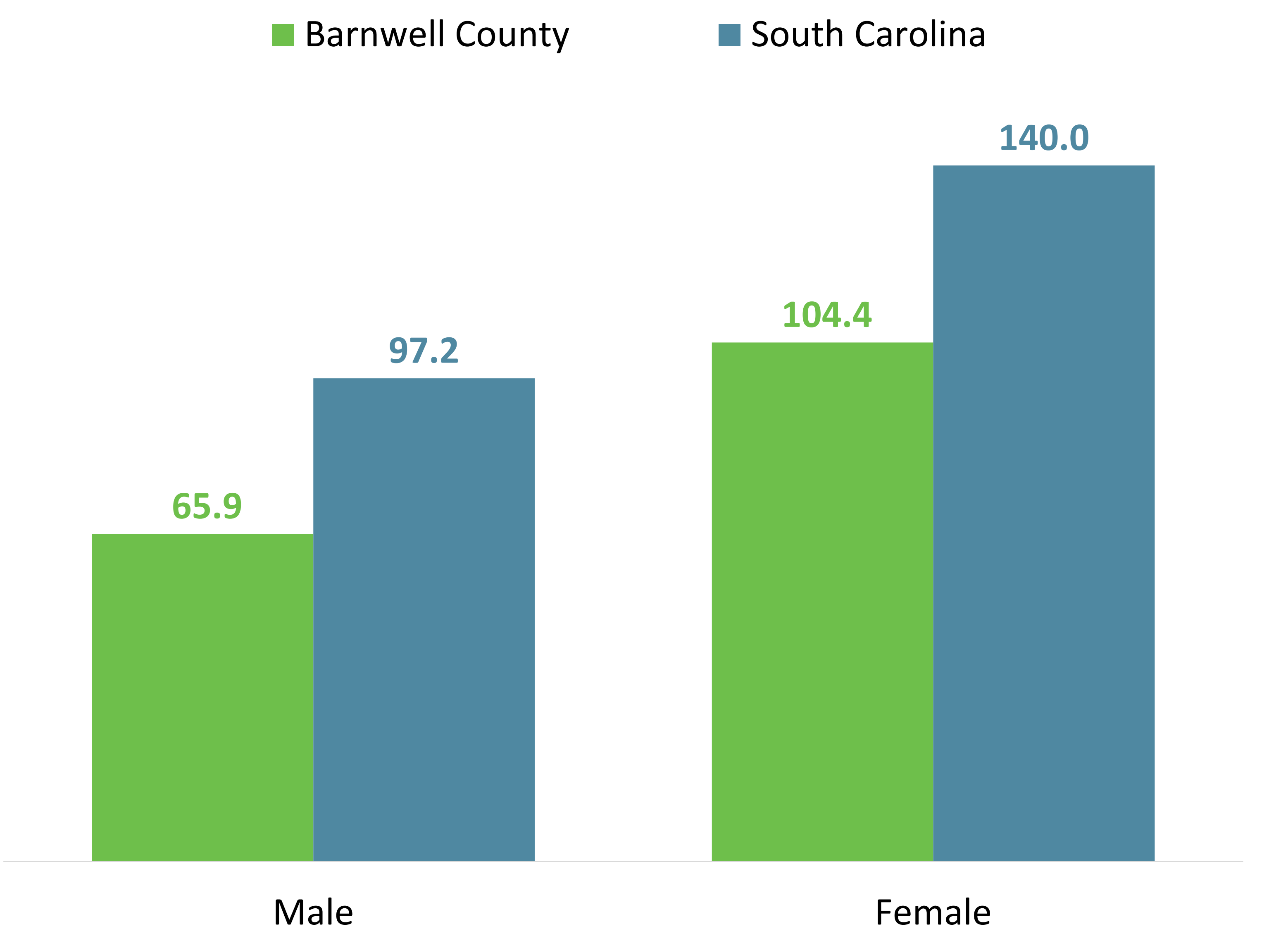
Source: SC VDRS, 2017-2021.
Notes: Fatal injuries occurred in SC (by county of injury). Population for year 2021 based on single-race estimates and for years prior based on bridge-race estimates.

Suicides in Barnwell County, by Race and Sex
Rate per 100,000 population



Source: SC VDRS, 2012-2021.
Note: Rates denoted with a * are suppressed due to counts <5. Population for year 2021 based on single-race estimates and for years prior based on bridge-race estimates.

Self-Harm-Related Emergency Department Visits
Rate per 100,000 population



Source: SC RFA ED Visits and Inpatient Discharges, 2017-2021.
Note: Includes cases subsequently admitted to the inpatient setting from the ED and cases coded as an initial encounter for injury. Population for year 2021 based on single-race estimates and for years prior based on bridge-race estimates.