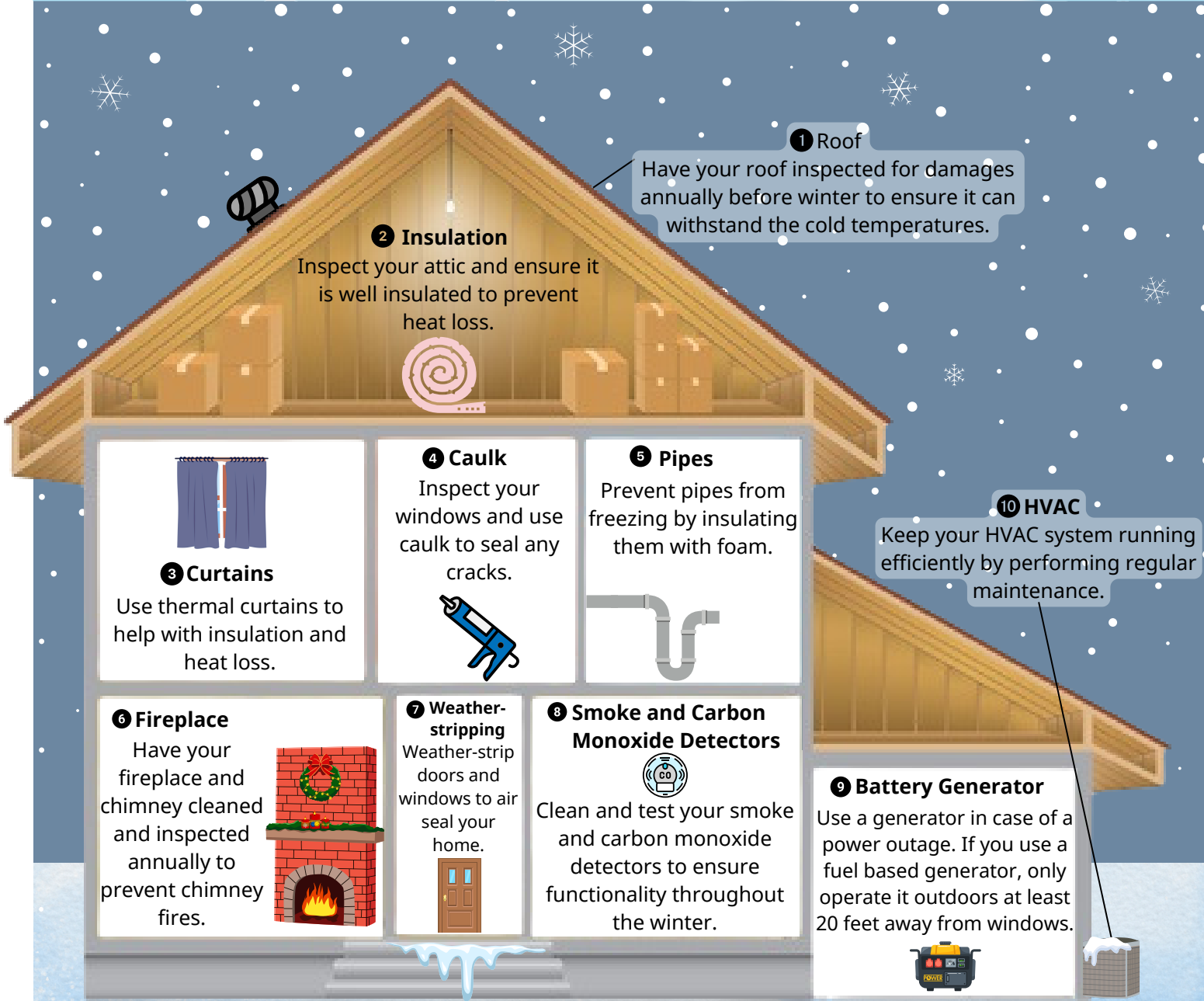


Is Your Home Winter Ready?

South Carolina has a humid, subtropical climate. On average, the temperature from December to February is 36.4°F - 58.8°F. Although the winters are generally mild in South Carolina, there have been instances of severe winter weather. On January 21, 1985 Greenville, SC had a staggering temperature of -19°F! Severe winter weather is an infrequent occurrence, but it's important to be prepared!

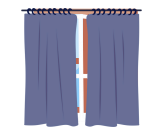


1 Roof

Have your roof inspected for damages annually before winter to ensure it can withstand the cold temperatures.

2 Insulation

Inspect your attic and ensure it is well insulated to prevent heat loss.



3 Curtains

Use thermal curtains to help with insulation and heat loss.

4 Caulk

Inspect your windows and use caulk to seal any cracks.



5 Pipes

Prevent pipes from freezing by insulating them with foam.



10 HVAC

Keep your HVAC system running efficiently by performing regular maintenance.

6 Fireplace

Have your fireplace and chimney cleaned and inspected annually to prevent chimney fires.



7 Weather-stripping

Weather-strip doors and windows to air seal your home.



8 Smoke and Carbon Monoxide Detectors

Clean and test your smoke and carbon monoxide detectors to ensure functionality throughout the winter.



9 Battery Generator

Use a generator in case of a power outage. If you use a fuel based generator, only operate it outdoors at least 20 feet away from windows.



Need financial assistance weatherizing your home?

Visit: <https://oeo.sc.gov/managedsites/prd/oeo/liheap.html>



For more severe weather tips, you can visit:
<https://www.scmd.org/stay-informed/publications/severe-winter-weather-guide/>